

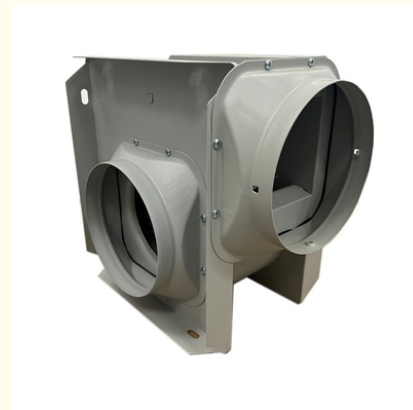
220V Metal Split Duct Exhaust Fan 500RPM Low Noise

Our Product Introduction

for more products please visit us on zd-fan.com

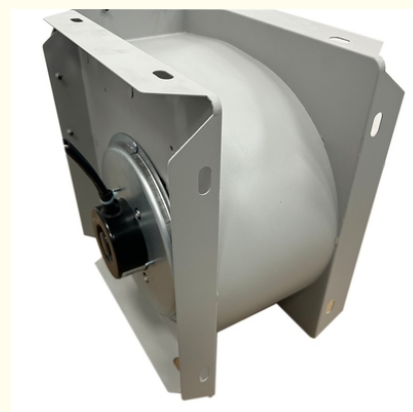
Basic Information

- Place of Origin: Guangdong, China
- Certification: CCC/CE/ISO9001
- Model Number: DPT10-15
- Minimum Order Quantity: 1
- Price: \$13-18

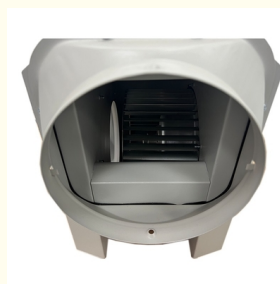


Product Specification

- Voltage: 220V
- Speed: 500RPM
- Blade Material: Metal
- Mounting Type: Duct Fan
- Model Number: DPT10-15
- Material: Metal
- Supply Ability: 20000/month
- Customized Support: OEM, ODM
- Logo Customization: Accept Customized Logo
- Product Type: Cabinet Centrifugal Fan
- Feature: Durable Low Noise Energy Saving High Performance
- After-sales Service: Video Technical Support
- Packing: Carton & Wooden Box
- Payment Terms: TT,L/C,D/A,D/P,Western Union,MoneyGram



More Images



Product Description

220V Industrial Smoke Extractor - In-line Duct Centrifugal Exhaust Fan

Product Specifications

Customization Support	OEM, ODM
Blade Material	Metal
Mounting Type	Duct Fan
Voltage	220V
Speed	500RPM
Warranty	1 Year
After-sales Service	Video technical support
Product Name	Split Duct Exhaust Fan
Packing	Carton & Wooden box
Supply Ability	20,000 units/month
Port	Guangzhou
Payment Methods	TT, L/C, D/A, D/P, Western Union, MoneyGram

Key Features

- Durable metal construction
- Low noise operation
- Energy efficient design
- High performance ventilation
- Professional service support



VENTILATION EQUIPMENT

20+ YEARS OF PROFESSIONAL INDUSTRY EXPERIENCE





20+ YEARS

With full-chain production capabilities from components to complete systems.



OEM&ODM

Customized solutions for diverse climates and architectures.



TRANSPORT

Fast delivery in cooperation with several logistics companies.



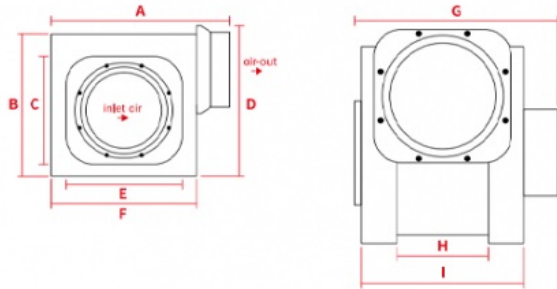
FAVORABLE PRICE

Customers can enjoy the company's long-term technical advisory services.

PRODUCT PERFORMANCE SPECIFICATIONS

Model number	Voltage/frequency	Power	Air volume	Static pressure	Noise	Rotating speed	Installation Information		Package dimensions	Weight
	(V/Hz)	(W)	(m³/h)	(Pa)	(dB)	(r/min)	Nozzle diameter (mm)	Usage area (m²)	(mm)	(kg)
DPT10-15	220/50	28	150	65	32	1290	Φ100	6-10	240x200x225	2.5
DPT10-25	220/50	43	250	110	35	1560	Φ100	10-17	240x200x225	2.5
DPT15-30	220/50	48	300	140	43	1000	Φ150	10-20	340x260x340	4.2
DPT15-45	220/50	56	450	140	45	1206	Φ150	20-25	340x260x340	4.2
DPT20-50	220/50	95	500	180	46	1000	Φ200	25-28	390x360x400	6.4
DPT20-60	220/50	100	600	180	46	1200	Φ200	28-33	390x360x400	6.4
DPT20-70	220/50	110	700	190	48	1100	Φ200	33-38	390x360x400	7.5
DPT20-80	220/50	120	800	200	48	1200	Φ200	38-42	390x360x400	7.5
DPT20-90	220/50	133	900	220	50	1000	Φ200	42-48	390x360x400	7.5
DPT20-120	220/50	220	1200	230	52	1200	Φ200	48-58	390x360x400	8.4
DPT20-150	220/50	225	1500	280	53	1500	Φ200	60-70	390x360x400	8.4
DPT25-210	220/50	302	2100	320	65	1250	Φ250	80-100	410x365x400	9.5

PRODUCT DIMENSIONS DIAGRAM



PRODUCT DIMENSIONS

Model number	unit:mm									Air Port d1=d2
	A(L)	B	C	D (H)	E	F	H (W)	H	I	
DPT10-15	220	180	120	197	120	180	180	83	144	100
DPT10-25	220	180	120	197	120	180	180	83	144	100
DPT15-30	303	280	188	280	157	250	226	118	184	150
DPT15-45	303	280	188	280	157	250	226	118	184	150
DPT20-50	350	300	190	330	160	300	311	165	235	200
DPT20-60	350	300	190	330	160	300	311	165	235	200
DPT20-70	350	300	190	330	160	300	311	165	235	200
DPT20-80	350	300	190	330	160	300	311	165	235	200
DPT20-90	350	300	190	330	160	300	311	165	235	200
DPT20-120	350	300	190	330	160	300	311	165	235	200
DPT20-150	350	300	190	330	160	300	311	165	235	200
DPT25-210	390	335	190	370	160	310	320	185	255	250

Frequently Asked Questions

Why choose our industrial exhaust fans?

Since our establishment in 1997, we have maintained a quality-centric approach and actively developed our proprietary brand. We've passed ISO9001, CE, and national CCC certifications, and hold multiple utility model patents. Our company ranks among the top in the industry for comprehensive strength and brand influence.

What customization services do you offer?

We support non-standard designs including special voltage requirements, custom flange interfaces, and branded LOGO applications.

How do you ensure product quality?

We implement rigorous quality control measures: inspecting all components before production, following strict manufacturing processes, conducting comprehensive testing before shipment, and using secure packaging methods to protect the equipment.

What after-sales services do you provide?

- 24-hour service hotline with professional technical support
- Comprehensive technical guidance for installation and operation
- Regular follow-ups to monitor product performance
- Continuous updates on maintenance and servicing technologies

What is your minimum order quantity?

We accept orders of any size - from single units to bulk purchases. Every order receives our full attention and support.

WELCOME TO CONSULT AND NEGOTIATE

BACK TO HOME



 **ZhongDian** **Guangdong Zhongdian Jiajin Environmental Technology Co., Ltd.**



0085246403891



sales001@zd-fan.com



zd-fan.com

Xizi Industrial Zone, Lishui Town, Nanhai District, Foshan City, Guangdong Province, China