

## 220V Metal Split Duct Exhaust Fan 500RPM Low Noise

Our Product Introduction

for more products please visit us on [zd-fan.com](http://zd-fan.com)

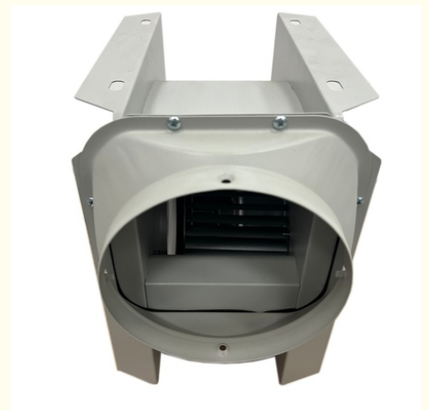
### Basic Information

- Place of Origin: Guangdong, China
- Certification: CCC/CE/ISO9001
- Model Number: DPT10-15
- Minimum Order Quantity: 1
- Price: \$13-18

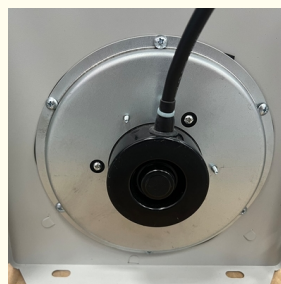


### Product Specification

- Voltage: 220V
- Speed: 500RPM
- Blade Material: Metal
- Mounting Type: Duct Fan
- Model Number: DPT10-15
- Material: Metal
- Customized Support: OEM, ODM
- Supply Ability: 20000/month
- Packing: Carton & Wooden Box
- Feature: Durable Low Noise Energy Saving High Performance
- Product Classification: Cabinet Centrifugal Fan
- Logo Customization: Accept Customized Logo
- Payment Methods: TT,L/C,D/A,D/P,Western Union,MoneyGram
- After-sales Service: Video Technical Support



### More Images



## Product Description

### Custom 220V Duct Multi Split Silent Anti-Backflow Smoke Extractor

#### In-line Duct Centrifugal Exhaust Split Duct Exhaust Fan



## Product Specifications

Attribute	Value
Customized Support	OEM, ODM
Blade Material	Metal
Mounting	Duct Fan
Voltage	220V
Speed	500RPM
Warranty	1 Year
After-sales Service	Video technical support
Material	Metal
Feature	Durable, Low Noise, Energy Saving, High Performance
Service	24-hour online service
Packing	Carton & Wooden box
Supply Ability	20000/month
Port	Guangzhou
Payment	TT, L/C, D/A, D/P, Western Union, MoneyGram

## Detailed Product Information

**Model Number:** DPT10-15

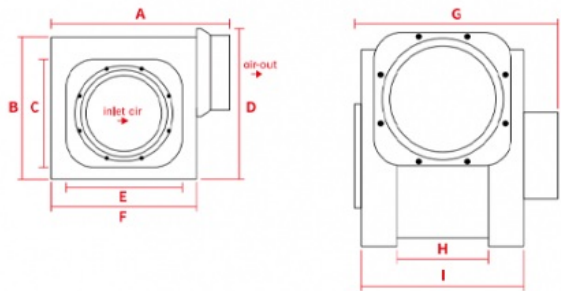
**Product Name:** Full Metal Ceiling Fan

**Logo:** Accept Customized Logo

PRODUCT PERFORMANCE SPECIFICATIONS

Model number	Voltage/frequency	Power	Air volume	Static pressure	Noise	Rotating speed	Installation Information		Package dimensions	Weight
	(V/Hz)	(W)	(m³/h)	(Pa)	(dB)	(r/min)	Nozzle diameter (mm)	Usage area (m²)	(mm)	(kg)
DPT10-15	220/50	28	150	65	32	1290	Φ100	6-10	240x200x225	2.5
DPT10-25	220/50	43	250	110	35	1560	Φ100	10-17	240x200x225	2.5
DPT15-30	220/50	48	300	140	43	1000	Φ150	10-20	340x260x340	4.2
DPT15-45	220/50	56	450	140	45	1206	Φ150	20-25	340x260x340	4.2
DPT20-50	220/50	95	500	180	46	1000	Φ200	25-28	390x360x400	6.4
DPT20-60	220/50	100	600	180	46	1200	Φ200	28-33	390x360x400	6.4
DPT20-70	220/50	110	700	190	48	1100	Φ200	33-38	390x360x400	7.5
DPT20-80	220/50	120	800	200	48	1200	Φ200	38-42	390x360x400	7.5
DPT20-90	220/50	133	900	220	50	1000	Φ200	42-48	390x360x400	7.5
DPT20-120	220/50	220	1200	230	52	1200	Φ200	48-58	390x360x400	8.4
DPT20-150	220/50	225	1500	280	53	1500	Φ200	60-70	390x360x400	8.4
DPT25-210	220/50	302	2100	320	65	1250	Φ250	80-100	410x365x400	9.5

PRODUCT DIMENSIONS DIAGRAM



PRODUCT DIMENSIONS

Model number	unit:mm									
	A(L)	B	C	D (H)	E	F	H (W)	H	I	Air Port d1=φ2
DPT10-15	220	180	120	197	120	180	180	83	144	100
DPT10-25	220	180	120	197	120	180	180	83	144	100
DPT15-30	303	280	188	280	157	250	226	118	184	150
DPT15-45	303	280	188	280	157	250	226	118	184	150
DPT20-50	350	300	190	330	160	300	311	165	235	200
DPT20-60	350	300	190	330	160	300	311	165	235	200
DPT20-70	350	300	190	330	160	300	311	165	235	200
DPT20-80	350	300	190	330	160	300	311	165	235	200
DPT20-90	350	300	190	330	160	300	311	165	235	200
DPT20-120	350	300	190	330	160	300	311	165	235	200
DPT20-150	350	300	190	330	160	300	311	165	235	200
DPT25-210	390	335	190	370	160	310	320	185	255	250

Why Choose Our Exhaust Fans

- Professional service with high quality standards
- ISO9001, CE, and CCC certified
- Multiple utility model patents
- Industry-leading comprehensive strength
- Strong brand influence

## WHY CHOOSE US?

Welcome to Our Shop



### POWERFUL MANUFACTURER

Years of manufacturing experience, each process is strictly controlled.

### CUSTOMIZED SERVICES

Provide a variety of styles of customization services to meet different needs.



### HIGH QUALITY MATERIALS

Carefully polish every detail to enhance the quality of the product

### ATTENTIVE SERVICE

All customer information will be kept secure and will not be disclosed to the public.



### ONE-STOP SHOPPING, A COMPLETE SET OF SERVICE



Here you can buy all the products needed in the ventilation equipment at one time, and customers can enjoy the company's long-term technical advisory services.

## PRODUCT CLASSIFICATION

Welcome to Our Shop



BPT10-12

[VIEW MORE](#)



DJT10-20

[VIEW MORE](#)



DKT-2.25-M

[VIEW MORE](#)



DT11-32G

[VIEW MORE](#)



JPT10-18V

[VIEW MORE](#)



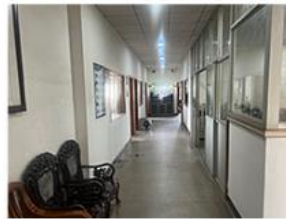
## ABOUT US

► Since its establishment in 1997, we have always adhered to the quality line and actively created our own brand, Zhongdian. We have successively passed ISO9001, CE and CCC certifications, and obtained multiple utility model patents. Our comprehensive strength and brand influence rank among the top in the industry.

[LEARN MORE](#)



Guangdong Zhongdian Jiajin Environmental Technology Co., Ltd. adheres to the business philosophy of "technology driven development, respect for talent, reform and innovation, and pursuit of excellence", introduces numerous advanced automation equipment and 5S management systems, attaches importance to user experience of products, and takes continuous customer satisfaction as the business orientation. After unremitting efforts, we have become the leader in the fresh air system market.



Guangdong Zhongdian Jiajin Environmental Technology Co., Ltd. adheres to the principle of prioritizing quality over output, and has won the trust of users across the country with excellent quality and outstanding performance. And strive to enhance competitive advantages in pre-sales, in sales, after-sales and other aspects, and will continue to adhere to the creed of customer first and service first. It is the continuous iteration of products and services, striving to become a leading brand in mid to high end fresh air system equipment.



## Frequently Asked Questions

### Q: Why choose us?

A: Since its establishment in 1997, we have adhered to a quality-centric approach and actively developed our proprietary brand, Zhongdian. We have passed ISO9001, CE, and national CCC mandatory product certifications and obtained multiple utility model patents. The company ranks among the top in the industry in terms of comprehensive strength and brand influence.

### Q: What are our customized services?

A: We support non-standard design, including special voltage requirements, flange interfaces, and custom LOGO applications.

### Q: How do we guarantee the quality of our products?

A: We inspect every component before production, follow strict manufacturing processes, conduct comprehensive testing before shipment, and use secure packaging methods to ensure product integrity.

### Q: About after-sales service.

A: 1) 24-hour service hotline with professional technical support; 2) Comprehensive technical guidance for product use; 3) Regular follow-ups to monitor product operation and provide maintenance updates.

### Q: What's your MOQ?

A: We don't have minimum order quantity requirements. Whether you need 1 unit or 100 units, we provide the same high level of service and support.

**WELCOME TO CONSULT AND NEGOTIATE**

**BACK TO HOME**



 **ZhongDian** **Guangdong Zhongdian Jiajin Environmental Technology Co., Ltd.**



0085246403891



sales001@zd-fan.com



zd-fan.com

Xizi Industrial Zone, Lishui Town, Nanhai District, Foshan City, Guangdong Province, China