

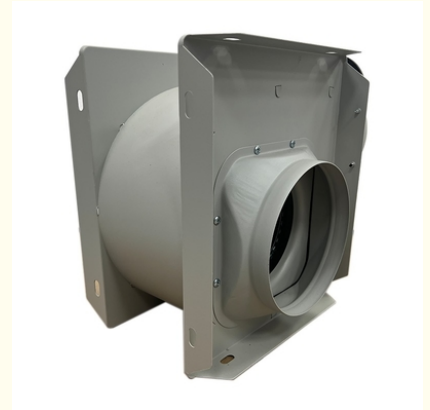
220V Metal Split Duct Exhaust Fan 500RPM Low Noise

Our Product Introduction

for more products please visit us on zd-fan.com

Basic Information

- Place of Origin: Guangdong, China
- Certification: CCC/CE/ISO9001
- Model Number: DPT10-15
- Minimum Order Quantity: 1
- Price: \$13-18



Product Specification

- Blade Material: Metal
- Mounting Type: Duct Fan
- Voltage: 220V
- Speed: 500RPM
- Model Number: DPT10-15
- Material: Metal
- Customized Support: OEM, ODM
- Supply Ability: 20000/month
- Product Type: Cabinet Centrifugal Fan
- Feature: Durable Low Noise Energy Saving High Performance
- Logo Customization: Accept Customized Logo
- Payment Terms: TT,L/C,D/A,D/P,Western Union,MoneyGram
- After-sales Service: Video Technical Support
- Packaging: Carton & Wooden Box



More Images



Product Description

Vertical Install Smoke Extractor In-line Duct Centrifugal Exhaust Fan

Product Specifications

Attribute	Value
Customized Support	OEM, ODM
Blade Material	Metal
Mounting	Duct Fan
Voltage	220V
Speed	500RPM
Warranty	1 Year
After-sales Service	Video technical support
Material	Metal
Feature	Durable, Low Noise, Energy Saving, High Performance
Service	24-hour online service
Packing	Carton & Wooden box
Supply Ability	20,000/month
Port	Guangzhou
Payment	TT, L/C, D/A, D/P, Western Union, MoneyGram

Product Details



VENTILATION EQUIPMENT

20+ YEARS OF PROFESSIONAL INDUSTRY EXPERIENCE





20+ YEARS
With full-chain production capabilities from components to complete systems.



OEM&ODM
Customized solutions for diverse climates and architectures.



TRANSPORT
Fast delivery in cooperation with several logistics companies.

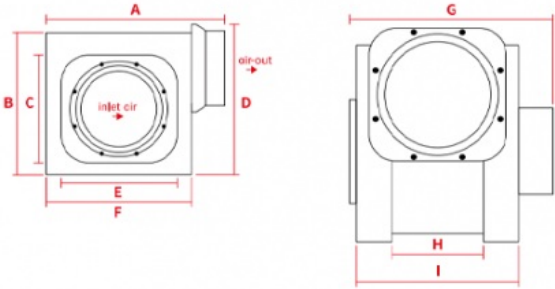


FAVORABLE PRICE
Customers can enjoy the company's long-term technical advisory services.

PRODUCT PERFORMANCE SPECIFICATIONS

Model number	Voltage/frequency	Power	Air volume	Static pressure	Noise	Rotating speed	Installation Information		Package dimensions	Weight
	(V/Hz)	(W)	(m³/h)	(Pa)	(dB)	(r/min)	Nozzle diameter	Usage area	(mm)	(kg)
DPT10-15	220/50	28	150	65	32	1290	Φ100	6-10	240x200x225	2.5
DPT10-25	220/50	43	250	110	35	1560	Φ100	10-17	240x200x225	2.5
DPT15-30	220/50	48	300	140	43	1000	Φ150	10-20	340x260x340	4.2
DPT15-45	220/50	56	450	140	45	1206	Φ150	20-25	340x260x340	4.2
DPT20-50	220/50	95	500	180	46	1000	Φ200	25-28	390x360x400	6.4
DPT20-60	220/50	100	600	180	46	1200	Φ200	28-33	390x360x400	6.4
DPT20-70	220/50	110	700	190	48	1100	Φ200	33-38	390x360x400	7.5
DPT20-80	220/50	120	800	200	48	1200	Φ200	38-42	390x360x400	7.5
DPT20-90	220/50	133	900	220	50	1000	Φ200	42-48	390x360x400	7.5
DPT20-120	220/50	220	1200	230	52	1200	Φ200	48-58	390x360x400	8.4
DPT20-150	220/50	225	1500	280	53	1500	Φ200	60-70	390x360x400	8.4
DPT25-210	220/50	302	2100	320	65	1250	Φ250	80-100	410x365x400	9.5

PRODUCT DIMENSIONS DIAGRAM



PRODUCT DIMENSIONS

Model number	unit:mm									
	A(L)	B	C	D (H)	E	F	H (W)	H	I	Air Port d1=d2
DPT10-15	220	180	120	197	120	180	180	83	144	100
DPT10-25	220	180	120	197	120	180	180	83	144	100
DPT15-30	303	280	188	280	157	250	226	118	184	150
DPT15-45	303	280	188	280	157	250	226	118	184	150
DPT20-50	350	300	190	330	160	300	311	165	235	200
DPT20-60	350	300	190	330	160	300	311	165	235	200
DPT20-70	350	300	190	330	160	300	311	165	235	200
DPT20-80	350	300	190	330	160	300	311	165	235	200
DPT20-90	350	300	190	330	160	300	311	165	235	200
DPT20-120	350	300	190	330	160	300	311	165	235	200
DPT20-150	350	300	190	330	160	300	311	165	235	200
DPT25-210	390	335	190	370	160	310	320	185	255	250

Key Features

- High-performance centrifugal exhaust system
- Durable metal construction for industrial environments
- Energy-efficient operation at 500RPM
- Low noise operation for workplace comfort
- Vertical installation flexibility
- Customizable options available (OEM/ODM)

Frequently Asked Questions

Why choose our exhaust fans?

Since 1997, we've maintained a quality-focused approach with our Zhongdian brand. We hold ISO9001, CE, and CCC certifications along with multiple utility patents, ranking among industry leaders in quality and innovation.

What customization options are available?

We support non-standard designs including special voltage requirements, custom flange interfaces, and branded LOGO applications.

How is product quality ensured?

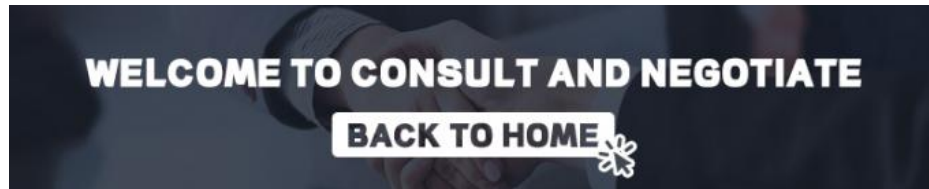
Each component undergoes pre-production inspection, assembly follows strict protocols, finished products complete rigorous testing, and secure packaging protects during transit.

What after-sales support is provided?

Our comprehensive support includes: 24/7 technical hotline, usage guidance, regular follow-ups, and maintenance technology updates.

Is there a minimum order quantity?

No MOQ requirements - we provide full support whether you need 1 unit or 100 units.



 **ZhongDian** **Guangdong Zhongdian Jiajin Environmental Technology Co., Ltd.**



0085246403891



sales001@zd-fan.com



zd-fan.com

Xizi Industrial Zone, Lishui Town, Nanhai District, Foshan City, Guangdong Province, China