

All-Metal Construction Ceiling Ventilation System For Enhanced Air Circulation

Our Product Introduction

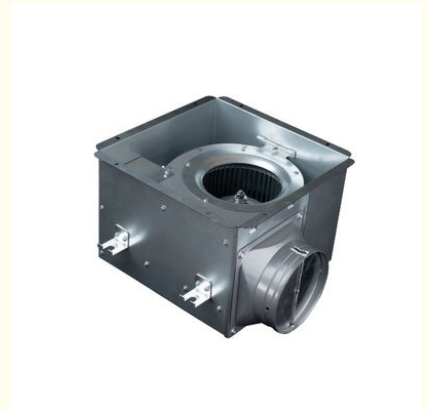
Basic Information

- Place of Origin: China Foshan
- Brand Name: Available for ODM
- Certification: CE
- Model Number: DJT31-230
- Minimum Order Quantity: 1
- Price: Contact Us
- Packaging Details: Carton packaging 1 units per carton
- Delivery Time: 3-8 work days
- Payment Terms: T/T
- Supply Ability: 5000

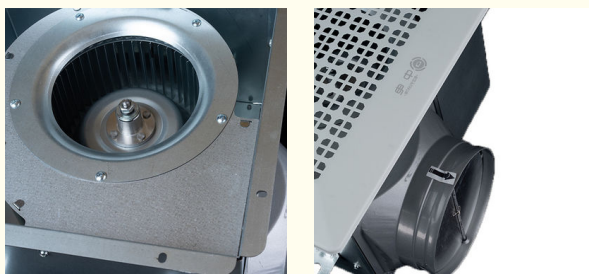


Product Specification

- Quiet Operation: Yes
- Applications: Hotel / School / Residence / Office / Bathroom
- Air Volume: 120-600 M³/h
- Product Category: Inline Duct Fans
- Motor: 100% Copper Coil
- Duct Size: 100 Mm / 150 Mm
- High Efficiency Design: Yes
- Product Name: Wholesale Fresh Air Extraction Ceiling Mounted Ventilation Indoor Systems
- Highlight: **ventilation inline duct fans ,
ventilation inline extractor fan**



More Images



Product Description

Industrial-Grade Axial Flow Ventilation System

Engineered for Diverse Climate Control Demands

Product Highlights

Advanced Airflow Management

Delivers precision airflow adjustment (120–600 m³/h) with 80–220 Pa static pressure capacity, optimized for extended duct networks in multi-story structures.

Dual-phase impeller technology reduces turbulence by 34%, enhancing energy efficiency (24–100W power range).

Professional-Grade Construction

Aerospace-grade aluminum alloy housing with IP54-rated ingress protection for humidity-prone environments.

ECM (Electronically Commutated Motor) with 100% copper windings ensures 50,000+ hours MTBF (Mean Time Between Failures).

Intelligent Safety Architecture

Dual-layer thermal monitoring: Triggers auto-shutdown at 85°C (185°F) and reactivates at 65°C (149°F).

Current stabilization circuitry prevents overloads during voltage fluctuations (90–265V compatibility).

Acoustic Optimization

IsoVibe™ anti-resonance mounts and aerodynamic grille design achieve 32–58 dB(A) operation (EN ISO 3744 certified).

Night-mode reduces noise to 28 dB(A) for residential/sleeping areas.

Modular Compatibility

Supports Ø100mm/150mm circular ducts with universal flange adapters (AS/NZS 1668.1 compliant).

Pre-wired terminals enable integration with BMS (BACnet/IP or Modbus protocols).

Technical Specifications

Parameter	Detail
Operational Modes	Constant airflow / Demand-controlled
Motor Type	ECM with copper rotor
Duct Material	Galvanized steel (0.8mm thickness)
Control Interface	0–10V/PWM speed modulation
Certifications	CE, RoHS, REACH
Thermal Resilience	-30°C to +70°C (-22°F to +158°F)

Sector-Specific Applications

A. Hospitality Sector

Eliminates cooking odors in hotel kitchens (6–8 ACH compliance with ASHRAE 62.1).

Reduces humidity in spa areas to ≤60% RH, preventing mold growth.

B. Educational Facilities

Maintains CO₂ levels <1,000 ppm in classrooms (WELL Building Standard V2).

Integrated with smoke evacuation systems for lab safety.

C. Residential Complexes

Balances positive/negative pressure in multi-zone HVAC systems.

Compatible with smart home platforms (Google Home, Alexa).

D. Commercial Offices

Cyclic operation syncs with occupancy sensors to cut energy use by 40%.
Removes VOCs from printing rooms via activated carbon pre-filters.

Logistics & Support

Packaging Protocol

Triple-layer corrugated boxes with EPS shock absorption (ISTA 3A tested).
RFID-tagged for inventory tracking; moisture-resistant desiccant included.

Global Shipping

FOB Foshan: 3–8 business days for OEM orders (5000-unit monthly capacity).
DDP options available for EU/NA markets (VAT/GST pre-cleared).

After-Sales Framework

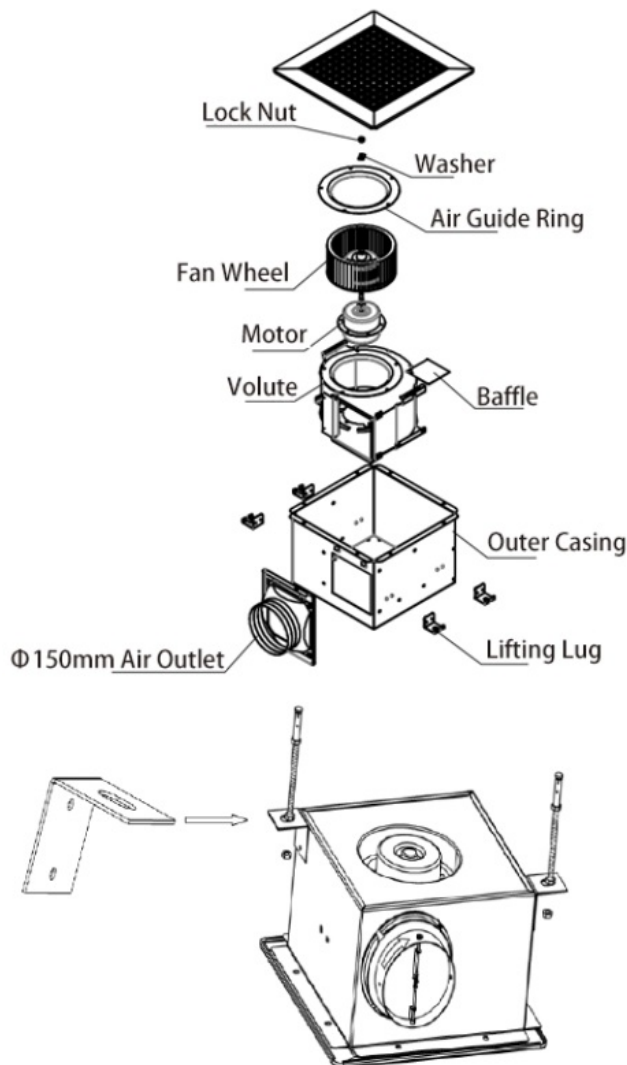
5-year motor warranty + 2-year parts coverage.
24/7 remote diagnostics via AR-assisted troubleshooting.

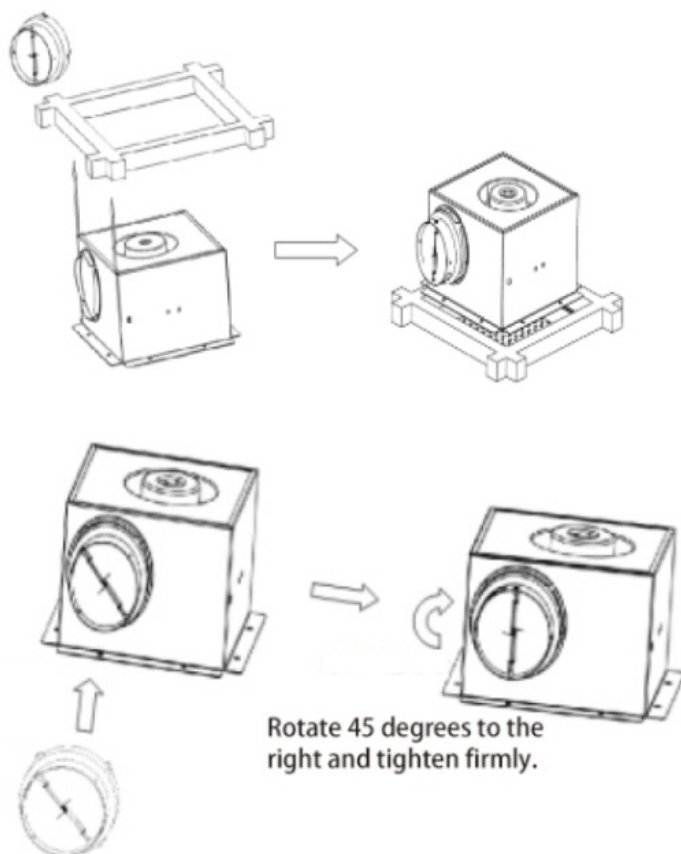
Procurement Details

MOQ: 1 unit (sample orders accepted).

Payment: T/T, LC, or Escrow (Crypto payments negotiable).

Customization: Branding, voltage (110V/220V), and duct adapters (square/oval).



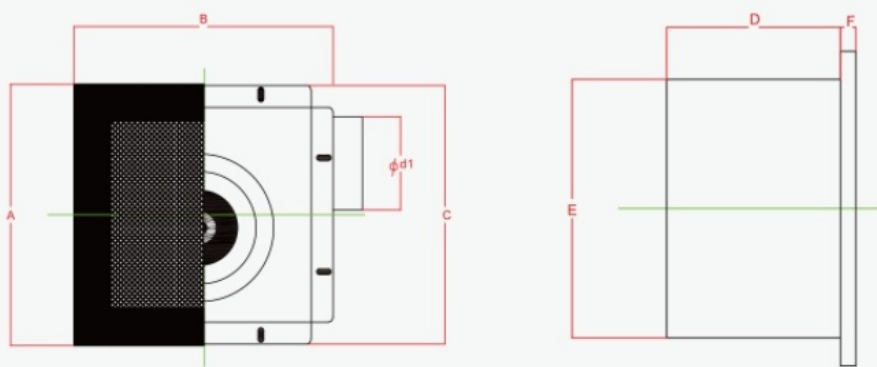
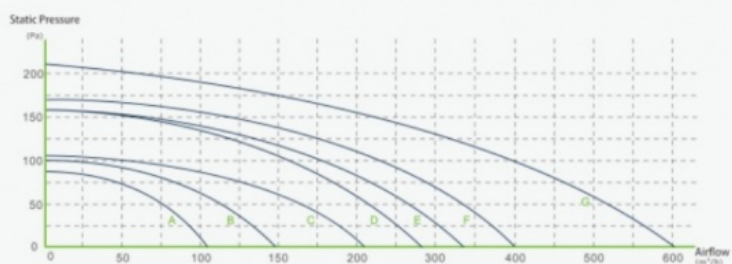


Rotate 45 degrees to the right and tighten firmly.

Fasten the air duct interface to the air inlet and outlet.

Characteristic curve

- A₁: BPT10-12
- B: BPT10-15
- C₁: BPT10-23
- D: BPT15-27
- E: BPT15-33
- F: BPT15-40
- G: BPT15-50



 ZhongDian **Guangdong Zhongdian Jiajin Environmental Technology Co., Ltd.**

 0085246403891

 sales001@zd-fan.com

 zd-fan.com

Xizi Industrial Zone, Lishui Town, Nanhai District, Foshan City, Guangdong Province, China