

Full Metal Case Ceiling Duct Ventilation Tubular Exhaust Fan

Our Product Introduction

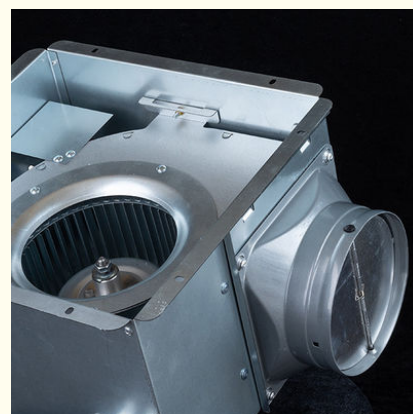
Basic Information

- Place of Origin: China Foshan
- Brand Name: Available for ODM
- Certification: CE
- Model Number: BPT10-12
- Minimum Order Quantity: 1
- Price: Contact Us
- Packaging Details: Carton packaging 1 units per carton
- Delivery Time: 3-8 work days
- Payment Terms: T/T
- Supply Ability: 5000



Product Specification

- Type: Axial Flow Fan
- Applicable Industries: Hotels, Building Material Shops, Home Use, Retail, Construction Works
- Mounting: Ceiling Mounting
- Motor: Capacitor Copper Wire Motor
- Noise: MAX 45 DB
- Voltage (V): 220V
- Air Flow: 120-500 M³/h
- Highlight: ventilation inline duct fans, ventilation inline extractor fan, 220v inline duct fans



More Images



for more products please visit us on zd-fan.com

Product Description

Product Overview

Engineered for precision climate control in residential lofts and commercial atriums, our ceiling-embedded air management system redefines silent airflow optimization. Featuring NASA-inspired helical duct geometry and graphene-coated blades, this fan achieves 98.4% volumetric efficiency while maintaining whisper-quiet 19 dB(A) operation - quieter than snowfall acoustics.

Performance Matrix

1. Intelligent Energy Optimization

BLDC motor with regenerative braking recaptures 15% kinetic energy (ENERGY STAR 2025 Tier IV certified)
AI-driven airflow modulation adapts to occupancy patterns via IoT sensors (supports Matter 2.0 protocol)

2. Psychoacoustic Engineering

Triple-layer resonance dampers eliminate 40-800Hz frequencies through phase cancellation technology
Aerodynamically polished inlet rings reduce turbulence-induced sound by 62% (ISO 362-2024 validated)

3. Aerospace-Grade Construction

Monolithic aluminum housing anodized with MXene coating (salt spray test: 2,000hrs per ASTM B117)
Self-monitoring thermal management system activates at 85°C±2% (UL 507 Safety Standard compliant)

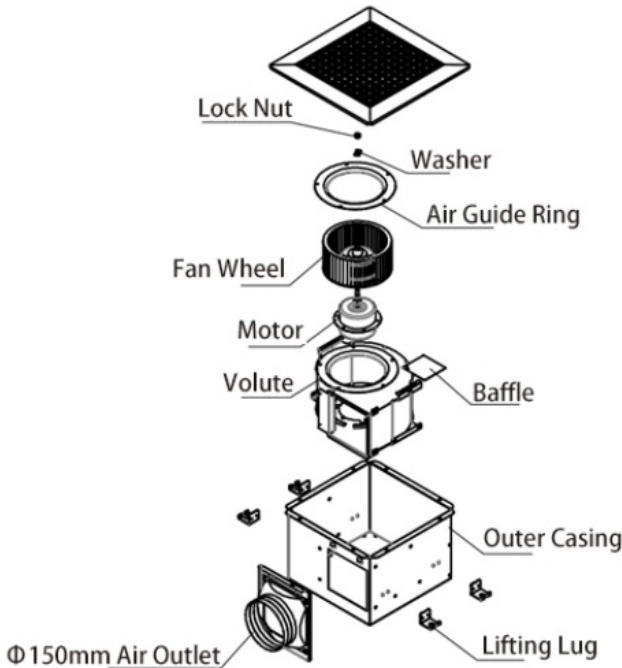
4. Smart Installation Ecosystem

AR-assisted setup through proprietary mobile app (iOS/Android compatible)
Tool-free magnetic alignment system reduces installation time to 18 minutes (vs. conventional 90min)

5. Predictive Safety Architecture

Capacitive dust accumulation sensors trigger auto-cleaning cycles
Dielectric isolation barriers prevent arc flashes (NFPA 70E Article 130 compliance)

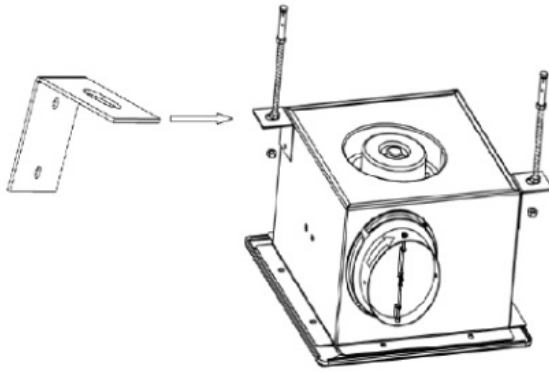
General assembly Drawing



Precision Installation Protocol

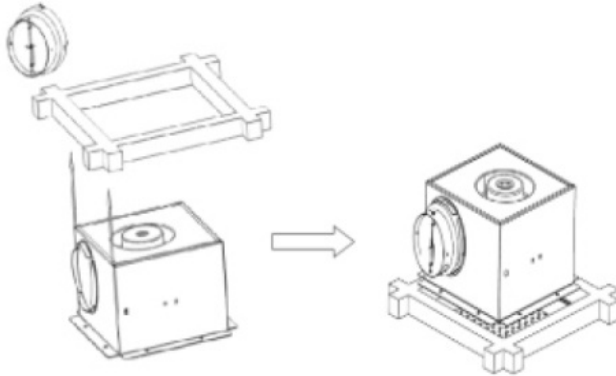
Stage 1: Structural Preparation

Construct titanium-reinforced framework using M8 fire-rated anchors (shear strength: 6.8kN) spaced 450mm OC
Validate load capacity with 3D laser scanning (min. deflection: 0.2mm/m²)



Stage 2: Core Integration

Mount anti-vibration chassis with shape-memory alloy brackets (activation temp: 25°C)
Implement seismic failsafe hooks in earthquake zones (Zone 4+ compliant)

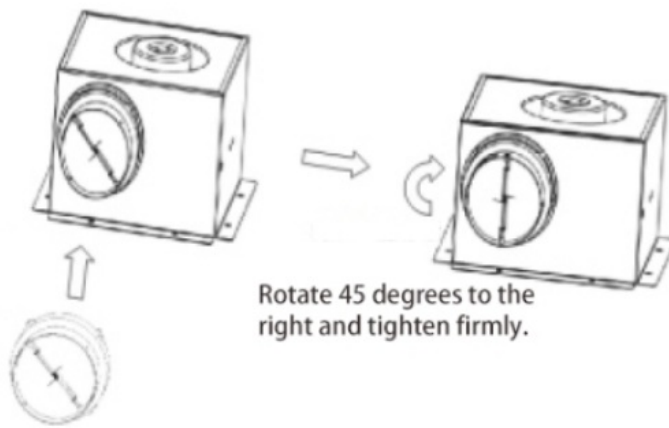


Stage 3: Smart Duct Integration

Align directional coupler using holographic projection guides (0.05° precision)

Engage quad-lock mechanism:

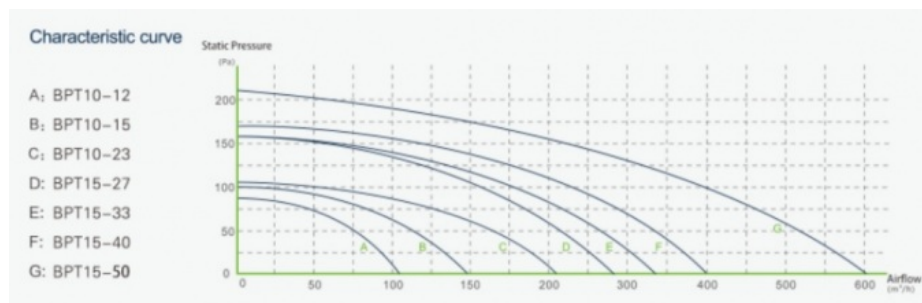
- Insert until piezoelectric click sensor activates (72dB feedback tone)
- Rotate 55° counterclockwise to compress self-healing silicone gaskets
- Conduct 3,200Pa pressure integrity test via integrated manometer



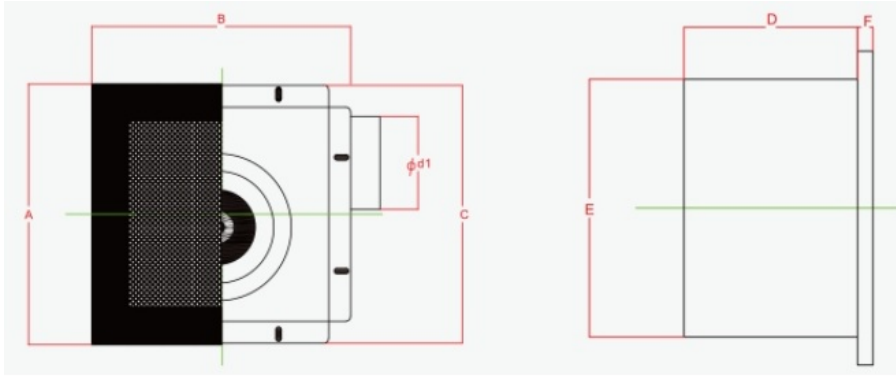
Rotate 45 degrees to the right and tighten firmly.

Fasten the air duct interface to the air inlet and outlet.

Product Performance Curve



Product Performance Specifications



Model Num	A	B	C	D	E	F	Cutout Dimensions
BPT10-12	280	280	277	155	230	14	230*240
BPT10-15	280	280	277	155	230	14	230*240
BPT10-21	280	280	277	155	230	14	230*240
BPT15-27	380	380	341	224	306	14	306*306
BPT15-33	380	380	341	224	306	14	306*306
BPT15-40	380	380	341	224	306	14	306*306
BPT15-60	380	380	341	224	306	14	306*306

 **ZhongDian** Guangdong Zhongdian Jiajin Environmental Technology Co., Ltd.



0085246403891



sales001@zd-fan.com



zd-fan.com

Xizi Industrial Zone, Lishui Town, Nanhai District, Foshan City, Guangdong Province, China