

Top-Performing Inline Duct Fans for Optimal Moisture Removal and Ventilation

Our Product Introduction

for more products please visit us on zd-fan.com

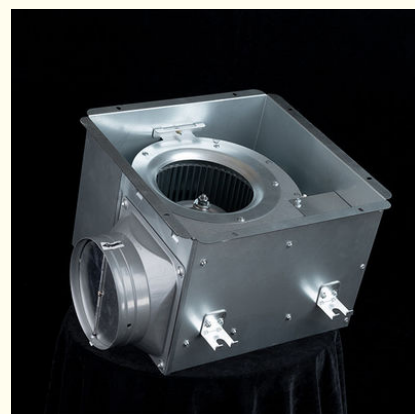
Basic Information

- Place of Origin: China Foshan
- Brand Name: Available for ODM
- Certification: CE
- Model Number: BPT10-12
- Minimum Order Quantity: 1
- Price: Contact Us
- Packaging Details: Carton packaging 1 units per carton
- Delivery Time: 3-8 work days
- Payment Terms: T/T
- Supply Ability: 5000

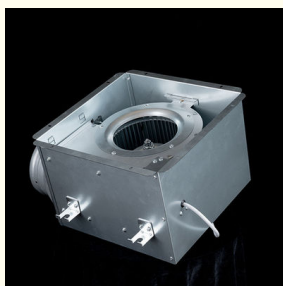


Product Specification

- Type: Ceiling Exhaust Duct Blower Fan
- Applicable Industries: Exhaust Ventilation
- Mounting: Ceiling Mounted
- Motor: Capacitor Copper Wire Motor
- Noise: MAX 45 DB
- Voltage (V): 220V
- Air Flow: 120-500 M³/h
- MOQ: 30 Set
- Feature: Low Noise, High Air Pressure, High Quality Motor
- Highlight: ventilation inline duct fans, ventilation inline extractor fan, 220v inline duct fans



More Images



Product Description

Product Overview

Engineered to combat excess humidity, our extraction fans proactively manage moisture in high-humidity zones such as bathrooms, laundry rooms, restrooms, and enclosed pool areas. Designed with scalable capacities, these units adapt to spaces ranging from compact washrooms to large-scale indoor aquatic facilities. Available in both exhaust and inline configurations, their primary objective is to channel moisture-laden air outdoors via duct systems, ensuring balanced indoor air quality and structural integrity.

Key Advantages

Durable Construction & Simplified Setup

A corrosion-resistant all-metal housing streamlines air outlet installation while ensuring long-term resilience. Pre-assembled mounting brackets enable seamless ceiling integration and alignment with existing ductwork.

High-Efficiency Capacitor Motor

Built with a capacitor-enhanced motor, the fan delivers consistent performance, extended operational lifespan, and reduced energy consumption.

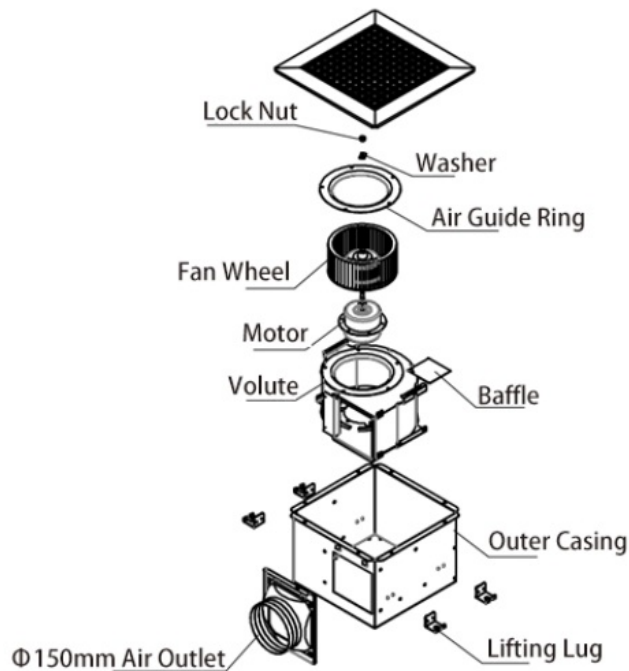
Advanced Safety Mechanisms

Integrated overheat protection automatically shuts down the unit during thermal anomalies, prioritizing user safety and equipment longevity.

Maintenance-Optimized Design

Tool-free twist-lock duct connectors and modular components simplify upkeep, allowing quick access for cleaning or part replacements.

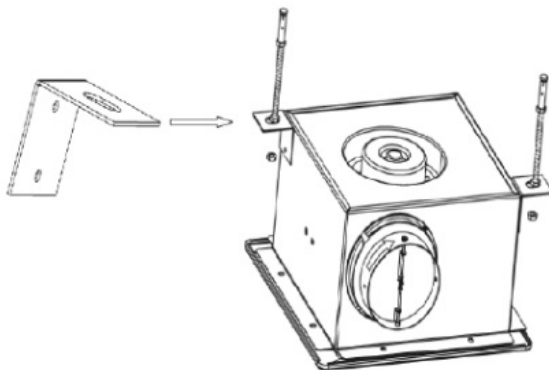
General assembly Drawing



Installation Procedure

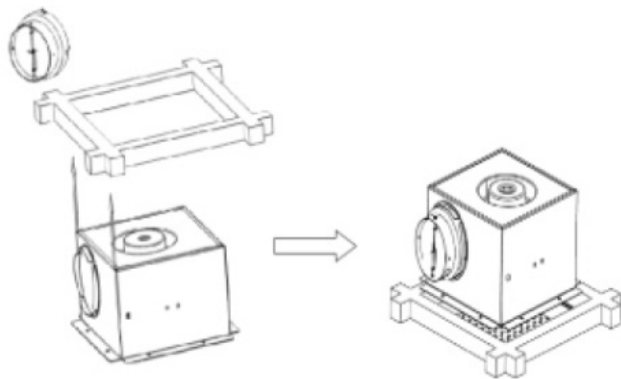
Step 1: Structural Frame Preparation

Construct a reinforced rectangular frame using load-bearing anchors, ensuring rigid fixation to ceiling joists for maximum stability.



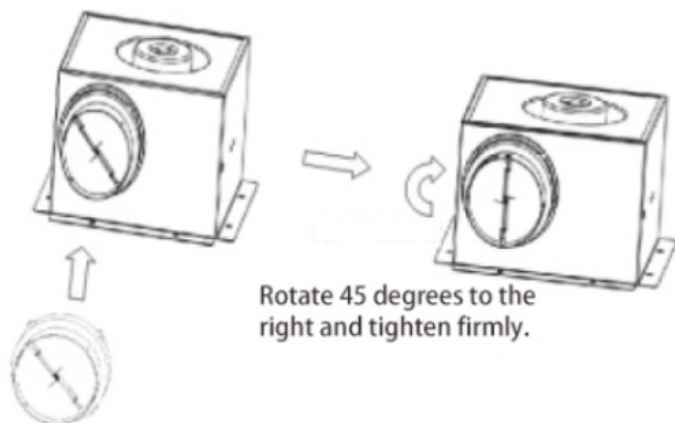
Step 2: Enclosure Mounting

Secure the fan housing to the pre-installed frame using anti-vibration fasteners, minimizing operational noise and enhancing durability.



Step 3: Duct Connectivity

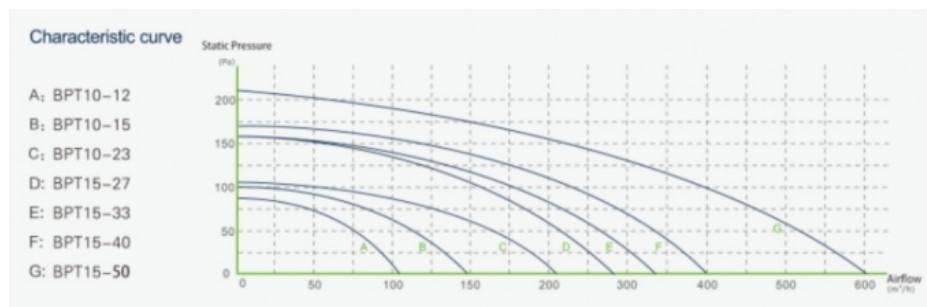
Align the ventilation duct collar's directional indicator with airflow requirements. Engage the bayonet-style locking mechanism to the cabinet's outlet port, ensuring airtight sealing and optimal airflow efficiency.



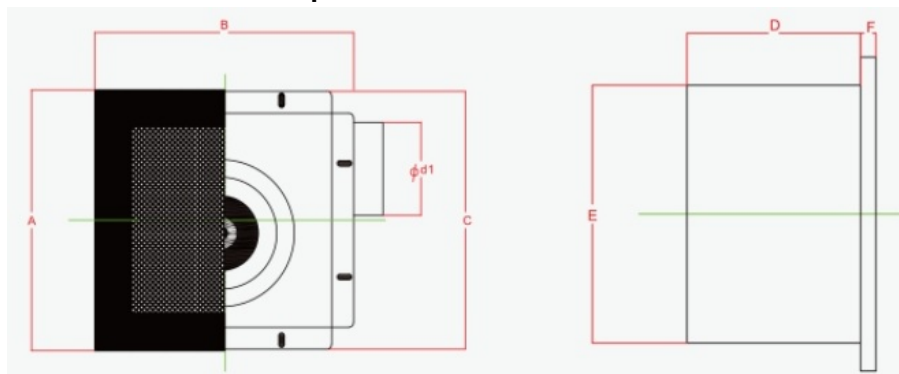
Rotate 45 degrees to the right and tighten firmly.

Fasten the air duct interface to the air inlet and outlet.

Product Performance Curve



Product Performance Specifications



Model Num	A	B	C	D	E	F	Cutout Dimensions
BPT10-12	280	280	277	155	230	14	230*240
BPT10-15	280	280	277	155	230	14	230*240
BPT10-21	280	280	277	155	230	14	230*240

BPT15-27	380	380	341	224	306	14	306*306
BPT15-33	380	380	341	224	306	14	306*306
BPT15-40	380	380	341	224	306	14	306*306
BPT15-60	380	380	341	224	306	14	306*306

 **ZhongDian** **Guangdong Zhongdian Jiajin Environmental Technology Co., Ltd.**



0085246403891



sales001@zd-fan.com



zd-fan.com

Xizi Industrial Zone, Lishui Town, Nanhai District, Foshan City, Guangdong Province, China