

## Industrial Inline Duct Fans Streamlined Impeller Design for Quick Maintenance and Peak Performance

Our Product Introduction

for more products please visit us on [zd-fan.com](http://zd-fan.com)

### Basic Information

- Place of Origin: China Foshan
- Brand Name: Available for ODM
- Certification: CE
- Model Number: DJT25-170
- Minimum Order Quantity: 1
- Price: Contact Us
- Packaging Details: Carton packaging 1 units per carton
- Delivery Time: 3-8 work days
- Payment Terms: T/T
- Supply Ability: 5000

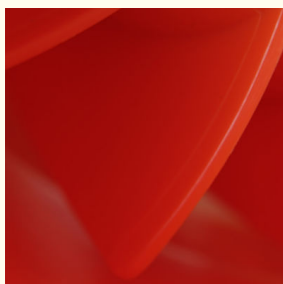


### Product Specification

- Applicable Industries: Hotels, Garment Shops, Building Material Shops, Manufacturing Plant, Machinery Repair Shops, Food & Beverage Factory, Farms, Restaurant, Home Use
- Product Type: Duct Exhaust Fan
- After-sales Service Provided: Online Support
- Place Of Origin: China Foshan
- Customized Support: OEM
- Blade Material: Plastic
- Voltage: 220V
- Warranty: 1 Year
- Product Name: Inline Fan
- Color: White
- Name: Inline Duct Fan
- Function: Ventilaion



### More Images



Product Description

Core Operational Applications

In industrial production environments, axial flow fans serve as critical components for atmospheric management. These units efficiently extract hazardous emissions and airborne contaminants from high-risk sectors including chemical refinement and biopharmaceutical manufacturing, thereby ensuring occupational safety compliance while enhancing equipment operational longevity. Engineered with robust materials, these ventilation systems demonstrate exceptional durability in challenging industrial conditions, maintaining consistent performance under extreme thermal and mechanical stressors.



Advanced Rotor Architecture

The fan's rotor mechanism incorporates maintenance-centric engineering principles. Its aerodynamically optimized profile enables rapid module disengagement, facilitating streamlined servicing procedures that reduce production interference by 40-60%. The patented blade interlock system permits individual vane replacement without full assembly dismantling, effectively minimizing maintenance windows. This modular design philosophy extends to precision-balanced motor integration, achieving vibration levels below ISO 14694-3 standards while optimizing energy conversion efficiency.

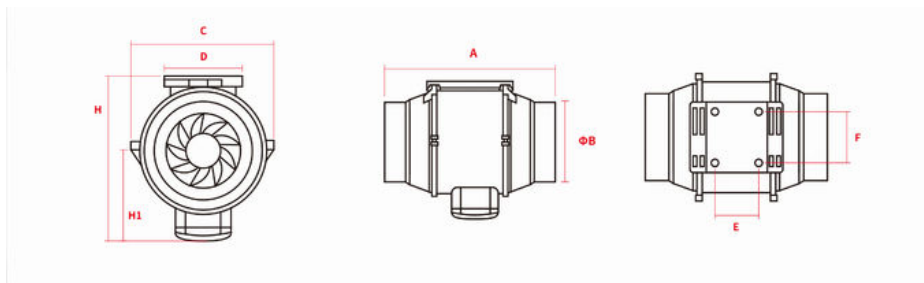
Intelligent System Integration

Featuring universal mounting interfaces compliant with ISO 5801 specifications, these axial units enable plug-and-play installation across existing ventilation infrastructures. The precision-engineered flange system ensures hermetic ductwork integration through triple-stage sealing technology, achieving <0.5% pressure loss at rated airflow capacity. Pre-configured alignment guides and smart fastening mechanisms eliminate calibration requirements, reducing installation duration by 35% compared to conventional models. Integrated leakage detection ports provide real-time seal integrity verification, substantially mitigating post-installation performance degradation risks.

Product Specifications

Model number	Power	Airflow	Static Pressure	Noise Level	Duct Diameter	Quantity per Carton	Net Weight
	(W)	(m5/h)	(Pa)	(dB)	(mm)	(Unit Box)	(kg)
DJT10-20	30/26	200/170	183/130	30/25	100	6	1.8
DJT15-54	48/40	540/384	330/280	40/35	150	6	2.2
DJT20-90	76/60	900/820	380/310	50/45	200	6	2.7
DJT25-170	173/152	1700/1200	550/480	56/50	250	1	18
DJT31-230	350/260	2300/1900	650/500	60/55	315	1	20


Product Dimensions Diagram




## Product Size Specifications

Model number	A	B(Φ)	C	D	E	F	H	H1
dJT10-20	300	100	100	214	62	60	182	95
DJT15-54	293	150	120	237	72	70	211	110
DJT20-90	304	200	140	258	78	85	235	124
DJT25-170	367	250	317	208	120	95	365	196
DJT31-230	450	315	360	255	120	95	410	215

 **ZhongDian** Guangdong Zhongdian Jiajin Environmental Technology Co., Ltd.

 0085246403891

 sales001@zd-fan.com

 zd-fan.com

Xizi Industrial Zone, Lishui Town, Nanhai District, Foshan City, Guangdong Province, China