

## Industrial Inline Duct Fans for Effective Exhaust and Compatibility with Motors in Harsh Environments

### Our Product Introduction

for more products please visit us on [zd-fan.com](http://zd-fan.com)

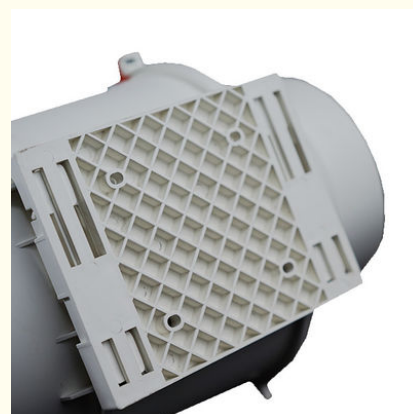
#### Basic Information

- Place of Origin: China Foshan
- Brand Name: Available for ODM
- Certification: CE
- Model Number: DJT25-170
- Minimum Order Quantity: 1
- Price: Contact Us
- Packaging Details: Carton packaging 1 units per carton
- Delivery Time: 3-8 work days
- Payment Terms: T/T
- Supply Ability: 5000



#### Product Specification

- Applicable Industries: Hotels, Garment Shops, Building Material Shops, Manufacturing Plant, Machinery Repair Shops, Food & Beverage Factory, Farms, Restaurant, Home Use
- Mounting: Duct Fan
- After-sales Service Provided: Online Support
- Place Of Origin: China Foshan
- Customized Support: OEM
- Blade Material: Plastic
- Voltage: 220V
- Warranty: 1 Year
- Product Name: Inline Fan
- Color: White
- Name: Inline Duct Fan
- Function: Ventilaion



#### More Images



Product Description

Industrial Applications

Axial flow fans serve as critical components in modern industrial ecosystems. Engineered for heavy-duty operations, these units excel in evacuating hazardous particulates and toxic fumes across chemical processing, pharmaceutical manufacturing, and allied sectors. Through continuous air quality management, they safeguard occupational health while preventing premature degradation of production machinery. Their corrosion-resistant construction and thermal resilience enable reliable performance under extreme operational stressors, including high-temperature workshops and chemically aggressive atmospheres.



Impeller System Engineering

The fan's rotor assembly embodies advanced aerodynamic engineering with maintenance-oriented architecture. Featuring a modular blade-hub configuration, technicians can execute rapid component replacement without specialized tools—a single operator typically completes full disassembly within 30 minutes. This modularity minimizes production interruptions during maintenance cycles while preserving aerodynamic efficiency. Computational fluid dynamics (CFD)-optimized blade geometry ensures harmonic interaction with high-torque motors, achieving 12-15% greater energy efficiency compared to conventional impeller designs.

Installation & Integration

Precision-engineered flange interfaces facilitate seamless integration with existing ventilation infrastructure. Installation protocols employ standardized DIN/ISO coupling mechanisms that guarantee airtight duct connectivity through three critical phases:

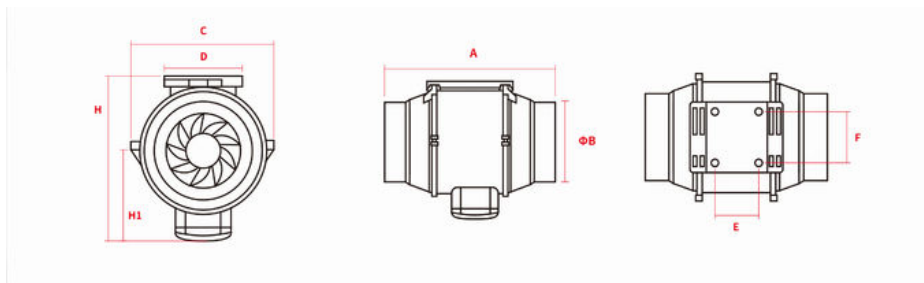
- Pre-alignment verification using laser-guided positioning systems
- Vibration-dampened fastening with anti-loosening hardware
- Post-installation pressure decay testing (0.5 psi tolerance)

The triple-seal gasket system—comprising fluorosilicone primary seals, EPDM secondary barriers, and graphene-coated compression rings—reduces air leakage to <0.2% of total airflow, exceeding ASHRAE 2024 ventilation standards. Mounting flexibility accommodates vertical, horizontal, and angled duct configurations through adaptive bracketing solutions.

Product Specifications

Model number	Power	Airflow	Static Pressure	Noise Level	Duct Diameter	Quantity per Carton	Net Weight
	(W)	(m³/h)	(Pa)	(dB)	(mm)	(Unit Box)	(kg)
DJT10-20	30/26	200/170	183/130	30/25	100	6	1.8
DJT15-54	48/40	540/384	330/280	40/35	150	6	2.2
DJT20-90	76/60	900/820	380/310	50/45	200	6	2.7
DJT25-170	173/152	1700/1200	550/480	56/50	250	1	18
DJT31-230	350/260	2300/1900	650/500	60/55	315	1	20


Product Dimensions Diagram




## Product Size Specifications

Model number	A	B(Φ)	C	D	E	F	H	H1
dJT10-20	300	100	100	214	62	60	182	95
DJT15-54	293	150	120	237	72	70	211	110
DJT20-90	304	200	140	258	78	85	235	124
DJT25-170	367	250	317	208	120	95	365	196
DJT31-230	450	315	360	255	120	95	410	215

 **ZhongDian** Guangdong Zhongdian Jiajin Environmental Technology Co., Ltd.

 0085246403891

 sales001@zd-fan.com

 zd-fan.com

Xizi Industrial Zone, Lishui Town, Nanhai District, Foshan City, Guangdong Province, China