

Industrial Production Applications of Cabinet Centrifugal Fans for Safe and Comfortable Working Environments

Our Product Introduction

for more products please visit us on zd-fan.com

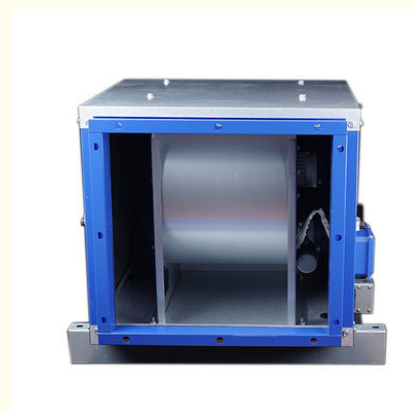
Basic Information

- Place of Origin: China Foshan
- Brand Name: Available for ODM
- Certification: CE
- Model Number: DT55-200
- Minimum Order Quantity: 1
- Price: Contact Us
- Packaging Details: Carton packaging 1 units per carton
- Delivery Time: 3-8 work days
- Payment Terms: T/T
- Supply Ability: 5000

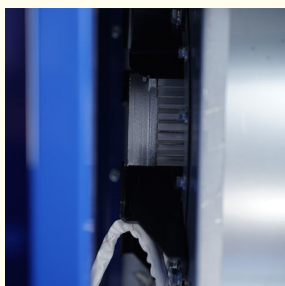


Product Specification

- Applicable Industries: Hotels, Garment Shops, Building Material Shops, Manufacturing Plant, Machinery Repair Shops, Food & Beverage Factory, Farms, Restaurant, Home Use, Retail, Food Shop, Printing Shops, Construction Works, Energy & Mining, Food & Beverage Shops, Advertising C
- Electric Current Type: AC
- After-sales Service Provided: Online Support
- Place Of Origin: Guangdong, China
- Voltage: 380V
- Customized Support: OEM, ODM, OBM
- Blade Material: Galvanized Steel
- Model Number: DT55-200
- Warranty: 1 Year
- Core Components: Motor, Other



More Images



Product Description

Industrial Applications

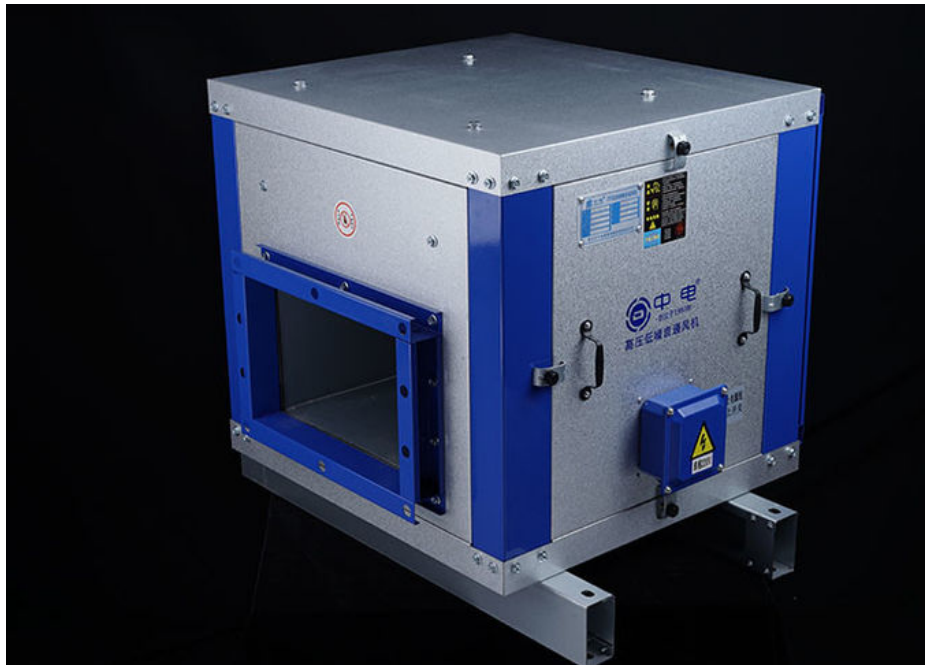
Centrifugal cabinet fans serve as critical infrastructure across multiple industrial sectors. These systems address persistent challenges in manufacturing environments, including hazardous emissions, particulate accumulation, and thermal excess. Key operational domains:

Chemical Processing - Rapid neutralization of corrosive/toxic fumes through directed airflow evacuation.

Metallurgical Operations - High-capacity particulate filtration in extreme-temperature smelting/purification processes.

Precision Electronics - ISO-classified air purity maintenance via multi-stage contamination control protocols.

Regulated Industries (Pharmaceuticals/Food) - HEPA-grade ventilation ensuring aseptic production compliance with GMP standards.



Built Environment Ventilation

As backbone components of modern HVAC architectures, these fans enable:

High-Occupancy Air Management - Continuous fresh air exchange in commercial complexes (>5 ACH) with CO₂/O₂ equilibrium maintenance.

Subterranean Air Quality Control - Active dispersion of vehicular exhaust (CO, NO_x) in enclosed parking structures.

Life Safety Integration - UL-certified smoke evacuation protocols achieving 90% smoke clearance within 3 minutes during fire emergencies.

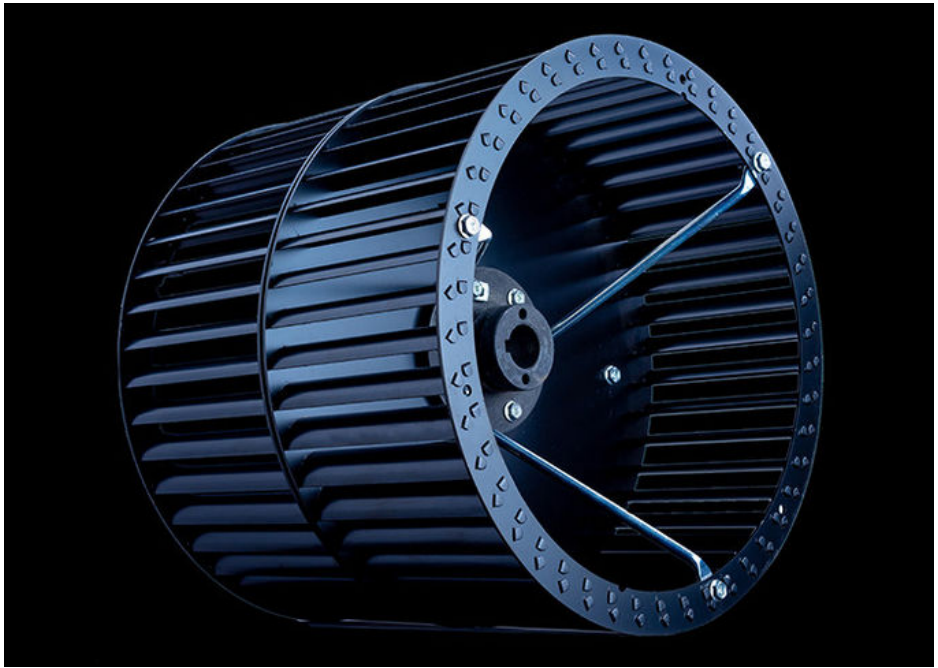


Drive Unit Engineering

Energy-Optimized Motor Design

Superior Energy Utilization - 92%+ electromechanical conversion efficiency via copper-wound stators and variable frequency drive (VFD) compatibility.

Adaptive Performance - IP55-rated construction with thermal overload protection, supporting 24/7 continuous duty cycles across 40Hz-60Hz power grids.



Fluid Dynamics Optimization

Aerodynamically Refined Impeller

Precision-engineered backward-curved blades implement:

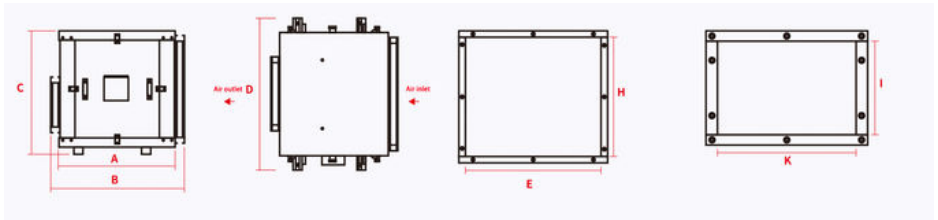
Vortex Minimization - Streamlined blade contours reducing turbulent separation by 37% (CFD-verified).

Pressure Gradient Engineering - Helical airflow acceleration achieving 12.5kPa static pressure at 2,850 RPM.

Performance Specifications

Model Numb	Voltage	Ffrequency	Rotating speed	Air volume	Total Pressure	Sound Level	Power	Weight
	(V)	(Hz)	(r/min)	(m2/h)	(Pa)	(dB)	(W)	(kg)
DT11-36	220/380	50	1450	3600	562	57	1.1	49
DT13-48	220/380	50	1450	4800	623	63	1.5	58
DT18-61	220/380	50	1450	6100	673	68	2.2	70
DT25-81	220/380	50	1450	8100	781	69	3	79
DT32-100	220/380	50	1450	10000	810	75	3.8	84
DT42-120	380	50	1450	12000	830	78	5	100
DT48-150	380	50	1450	15000	860	78	5.5	101
DT55-200	380	50	1450	20000	870	79	6	122

Product Dimensions Diagram



Product Dimensions Specifications

Model Numb	A	B(Lengt h)	C(Heigh t)	D(Width)	Air Inlet (Internal Diameter)		Air Outlet (Internal Diameter)		Flange Thickness
					E(Lengt h)	H(Heigh t)	I(Height)	K(Length)	
DT11-36	560	660	613	750	467	428	250	305	30x30

DT13-48	570	668	650	780	497	460	210	335	30x30
DT18-61	620	718	705	860	580	515	235	355	30x30
DT25-81	650	748	740	910	630	550	250	380	30x30
DT32-100	650	748	740	910	630	550	250	380	30x30
DT42-120	725	823	815	962	679	625	280	355	30x30
DT48-150	750	848	815	1000	717	625	380	405	30x30
DT55-200	780	879	840	1030	747	650	380	415	30x30

Company Profile

Guangdong Zhongdian Jiajin Environmental Technology Co., Ltd. originated from Foshan Nanhai Zhongxing Hardware Electrical Appliance Factory (with brands including Zhongdian Fresh Air and Zhongdian Xinke). The company specializes in the research, development, and manufacturing of DKT external rotor air conditioning fans (snail-type and square-type), mixed flow booster duct fans, KTF stainless steel external rotor centrifugal air handling units, air curtains, purifying low-noise fans, and centrifugal low-noise ventilation equipment. It is a modern national high-tech enterprise focusing on EC frequency conversion digital energy-saving fans. The manufacturing base is located in Foshan, Guangdong Province. Since its establishment in 1997, the company has adhered to a quality-centric approach and actively developed its proprietary brand, Zhongdian. It has successively passed ISO9001, CE, and national CCC mandatory product certifications and has obtained multiple utility model patents. The company ranks among the top in the industry in terms of comprehensive strength and brand influence.

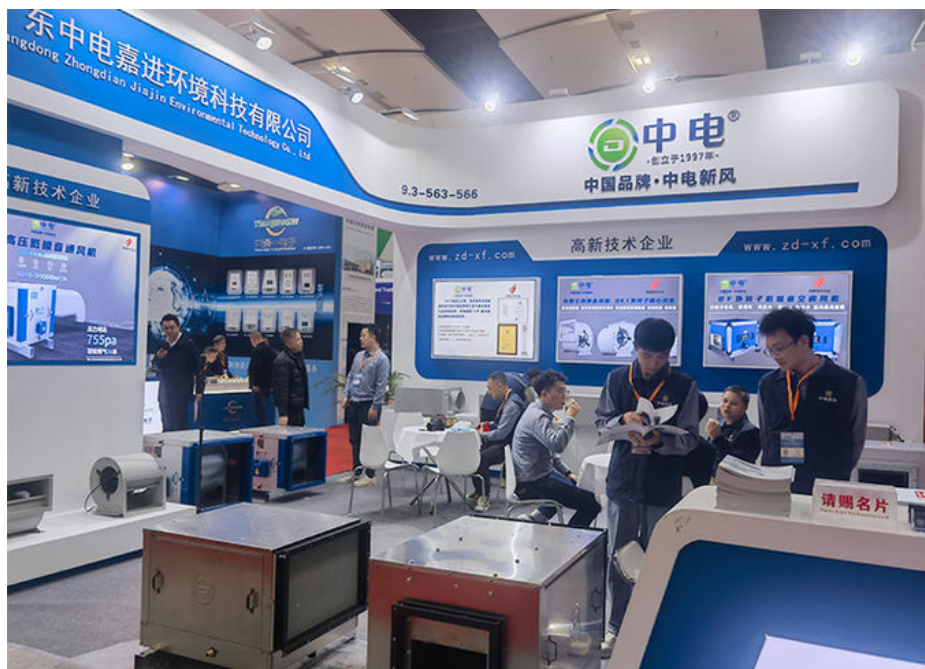
Guangdong Zhongdian Jiajin Environmental Technology Co., Ltd. operates under the philosophy of "Technological Innovation, Respect for Talent, Reform and Innovation, Pursuit of Excellence." The company has introduced over ten advanced automation devices and possesses a testing laboratory that complies with the national standard GB/T 1236-2017 "Performance Testing of Industrial Fans with Standardized Ducts," along with a 5S management system. It emphasizes user experience with its products and focuses on continually meeting customer needs. Through relentless efforts, the company has become a leader in the fresh air system market.

The company adheres to the principle of "Quality First, Quantity Second," earning trust from users across the country with its excellent quality and outstanding performance. It strives to enhance competitive advantages in pre-sales, sales, and after-sales services, and continues to uphold the creed of "Customer First, Service Excellence." The company is dedicated to continuous product and service iteration, aiming to become a leading brand in high-end fresh air system equipment.



EXHIBITION SHOW

We have strong sales network system and can undertake a large number of OEM/ODM orders.. Our products are mainly exported to Europe, America, the Middle East and Southeast Asia, and old customers account for up to 30%.Our products are made of pure copper tubes and use Yonggan motors, has the characteristics of high quality, super mute, comfortable style and reasonable price. We have independent R & D and design team that can meet any comments and conditions you have on product customization and technology research and development.

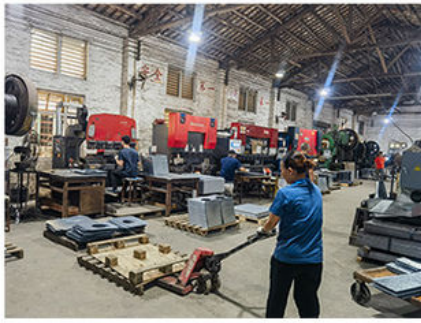


The team

Our team will also carry out some outdoor group building activities to enhance the cohesion of employees and devote themselves to work with more enthusiasm.




Showcase of Factory Capabilities



 **ZhongDian** **Guangdong Zhongdian Jiajin Environmental Technology Co., Ltd.**

 0085246403891

 sales001@zd-fan.com

 zd-fan.com

Xizi Industrial Zone, Lishui Town, Nanhai District, Foshan City, Guangdong Province, China