

DKT Type External Rotor Air Conditioning Centrifugal Cabinet Large Volume HVAC Duct Cooling Fan

Our Product Introduction

Basic Information

- Place of Origin: China Foshan
- Brand Name: Available for ODM
- Certification: CE
- Model Number: DKT-2.55A-W
- Minimum Order Quantity: 1
- Price: Contact Us
- Packaging Details: Carton packaging 1 units per carton
- Delivery Time: 3-8 work days
- Payment Terms: T/T
- Supply Ability: 5000



Product Specification

- Applicable Industries: Hotel Restaurant Workshop School Hotels, Building Material Shops, Manufacturing Plant, Food & Beverage Factory, Restaurant, Retail, Construction Works , Food & Beverage Shops
- Electric Current Type: AC
- After-sales Service Provided: Online Support
- Place Of Origin: Guangdong, China
- Voltage: 220/380V
- Blade Material: Steel Plate
- Warranty: 1 Year
- Customized Support: OEM, ODM, OBM
- Casing Material: Superior Steel Plate
- Motor: 100% Copper Wires
- Feature: Low Noise, Little Vibration, Large Air Volume



More Images

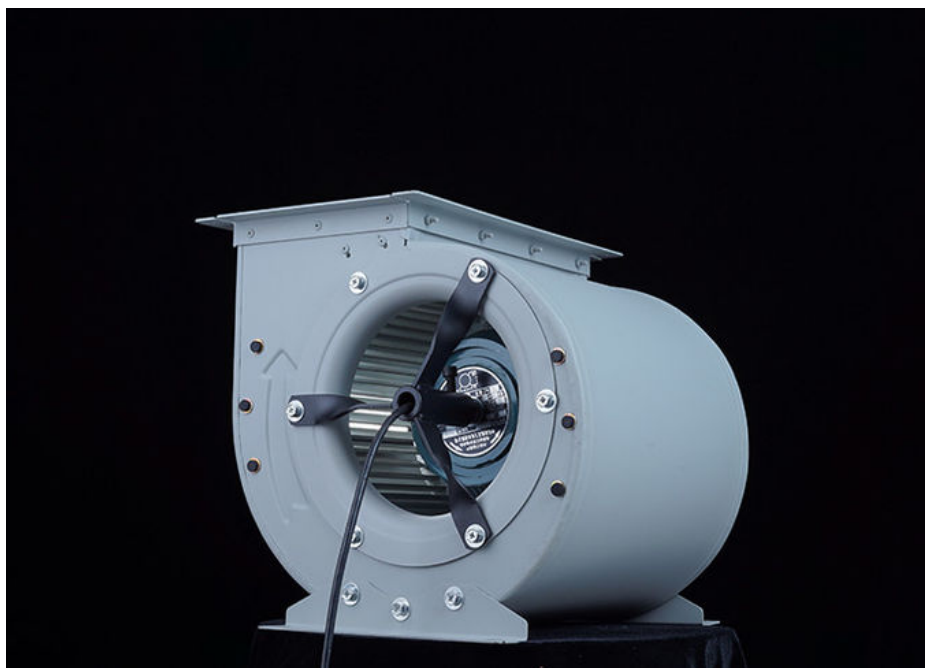


for more products please visit us on zd-fan.com

Product Description

Overview

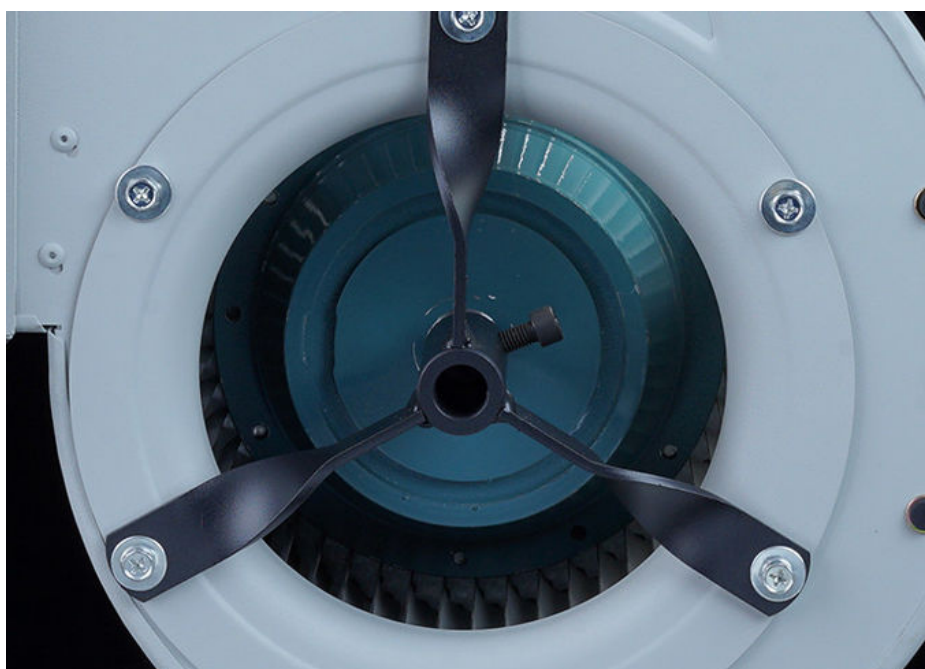
DKT series centrifugal air conditioning fans are low-noise compact fans developed by ourselves with reference to the advanced technology of similar international products. Rated flow rate is 1100m³/h~8700m³/h, total pressure is 270Pa~720Pa, and it adopts direct drive of external rotor motor. It has the characteristics of high efficiency, low noise, large flow rate, small size and compact structure. It is an ideal supporting product for variable air volume air conditioners, ducted air conditioning units, VAV systems and other HVAC and purification equipment.



Product Type

1. Direction of Rotation

DKT series fans can be divided into two types of rotation: left hand (LG) and right hand (RG). When viewed from the motor outlet, the fan with the impeller rotating clockwise is called a right-hand fan, and the fan with the impeller rotating counterclockwise is called a left-hand fan.



2. Air outlet direction

DKT series fans can be made into four air outlet directions: 0°, 90°, 180°, and 270°



Construction of product

DKT series fans are mainly composed of five parts: housing, impeller, support plate (frame), motor and air outlet flange.

1. Housing

The housing is made of hot-dip galvanized steel plate. The side panels have an aerodynamic shape. The air inlet is stretched as a whole, and the volute is riveted to the side panels. A series of rivet nut holes are preset on the side panels so that they can be installed according to the air outlet direction required by the user.

2. Impeller

The forward multi-blade impeller is made of high-quality hot-dip galvanized steel plate, and the blades are designed to a specific aerodynamic shape to achieve the highest efficiency and the lowest noise. The blades are fixed to the center plate and end rings with rivet claws. When running continuously at maximum power, the impeller will have sufficient rigidity. All impellers are tested for static and dynamic balance, and the internal control accuracy reaches G2.5 level (ANSI AMCA-204).

3. Support plate (frame)

The support plate is made of high-quality galvanized sheet, and the unique strengthening process ensures sufficient strength. The installation angle of the support plate can be adjusted according to the different needs of users. The frame of the fan above DKT215 is welded with angle steel and flat iron, and there are installation holes on all four sides of the frame to meet the installation needs of users in different directions.

4. Motor

DKT series fans are equipped with an external or low-noise three-phase asynchronous motor, which has the characteristics of fixed shaft and rotating shell. The motor is installed on the center disk of the impeller and is directly driven by the motor shell. According to user requirements, DKT series fans use special motors, which can be steplessly regulated by means of three-phase voltage regulator, thyristor voltage regulator, frequency converter, etc. to meet the requirements of variable system load.


5. Flange

The flange is made of high-quality hot-dip galvanized steel plate. The connection between the flange and the shell adopts the TOX welding-free process. It has a beautiful appearance and sufficient rigidity and strength. The flange is made of high-quality hot-dip galvanized steel plate, high-precision welding, and anti-rust spray treatment. It has a beautiful appearance and sufficient rigidity and strength.



 **ZhongDian** **Guangdong Zhongdian Jiajin Environmental Technology Co., Ltd.**

 0085246403891

 sales001@zd-fan.com

 zd-fan.com

Xizi Industrial Zone, Lishui Town, Nanhai District, Foshan City, Guangdong Province, China