

Wholesale High Volume Forward Curved Radial Power Pipe Turbine Double Inlet Centrifugal Blower Fan

Our Product Introduction

Basic Information

- Place of Origin: China Foshan
- Brand Name: Available for ODM
- Certification: CE
- Model Number: DKT-2.55A-W
- Minimum Order Quantity: 1
- Price: Contact Us
- Packaging Details: Carton packaging 1 units per carton
- Delivery Time: 3-8 work days
- Payment Terms: T/T
- Supply Ability: 5000



Product Specification

- Applicable Industries: Hotel Restaurant Workshop School Hotels, Building Material Shops, Manufacturing Plant, Food & Beverage Factory, Restaurant, Retail, Construction Works , Food & Beverage Shops
- Electric Current Type: AC
- After-sales Service Provided: Online Support
- Place Of Origin: Guangdong, China
- Voltage: 220/380V
- Blade Material: Steel Plate
- Warranty: 1 Year
- Customized Support: OEM, ODM, OBM
- Casing Material: Superior Steel Plate
- Motor: 100% Copper Wires
- Feature: Low Noise, Little Vibration, Large Air Volume



More Images

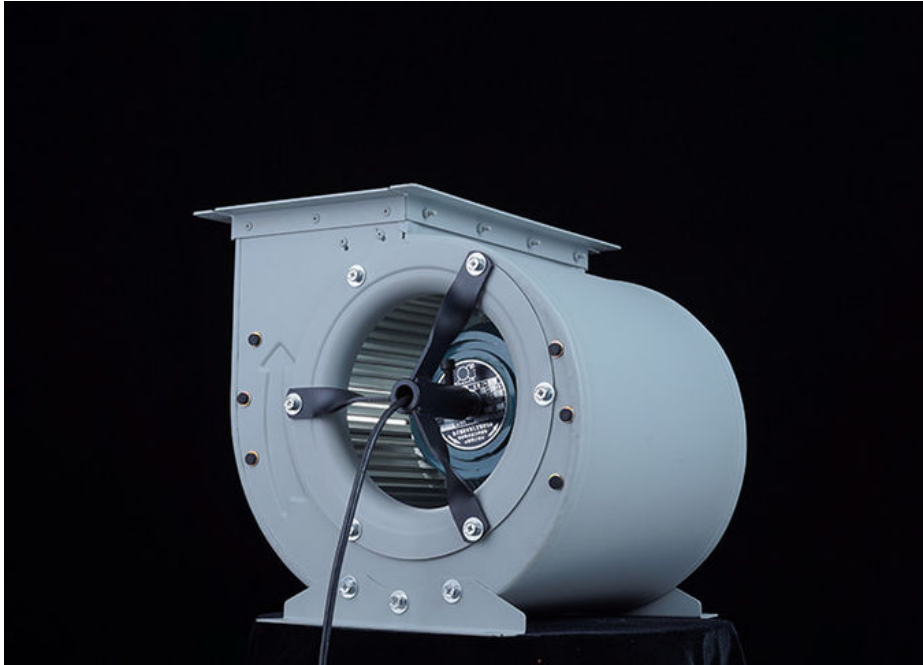


for more products please visit us on zd-fan.com

Product Description

Product Overview

This industrial-grade centrifugal blower fan is engineered for high-volume airflow applications, combining advanced forward-curved radial design with a double-inlet turbine system. Ideal for HVAC systems, industrial ventilation, and large-scale air circulation, it delivers exceptional performance in demanding environments. Crafted with corrosion-resistant materials and precision-balanced impellers, it ensures durability and low-noise operation



Key Features

High-Efficiency Design

Forward-Curved Radial Blades : Optimized for maximum air volume (CFM) and static pressure, suitable for ducted systems requiring uniform airflow distribution

Double Inlet Configuration : Enhances airflow intake by 30% compared to single-inlet models, reducing energy consumption while maintaining high output

Robust Construction

Durable Materials : Impellers made of galvanized steel or stainless steel (optional) for resistance to corrosion, heat, and abrasive particles

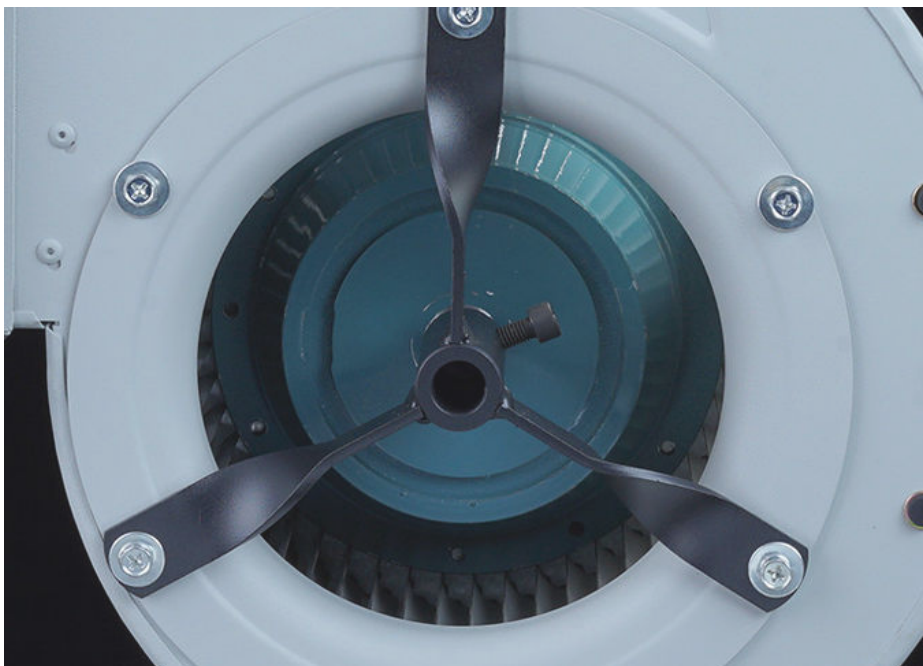
Precision-Balanced Motor : AC 220V/380V motor with IP55 protection, ensuring reliable operation at 2600–3000 RPM for continuous industrial use

Versatile Applications

Industrial Ventilation : Effective in factories, workshops, and warehouses for smoke extraction, dust removal, and cooling

HVAC Systems : Compatible with duct networks in commercial buildings, hospitals, and data centers

Specialized Use : Suitable for power plants, turbine cooling, and high-temperature exhaust environments



Quality Assurance

Certifications: CE, UL, and RoHS compliant

Warranty: 2-year limited warranty with optional extended service plans.

Testing: Rigorous balance testing and 72-hour continuous run trials before shipment



Wholesale Advantages

Cost-Effective Pricing: Bulk orders receive tiered discounts (MOQ: 10 units)

Customization: Tailor impeller size, voltage, and material to match specific requirements

Global Logistics: FOB/CIF support with fast delivery via air or sea freight



Why Choose Us?

Proven Expertise: Over 10 years in manufacturing industrial blowers for clients in 50+ countries

24/7 Support: Dedicated technical team for installation guidance and troubleshooting

Contact Us Today for a quote or sample request!



Guangdong Zhongdian Jiajin Environmental Technology Co., Ltd.

0085246403891

sales001@zd-fan.com

zd-fan.com

