

DKT External Extractor Blowers Inlet Centrifugal Cabinet Fan

Our Product Introduction

for more products please visit us on zd-fan.com

Basic Information

- Place of Origin: China Foshan
- Brand Name: Available for ODM
- Certification: CE
- Model Number: DKT-2.55A-W
- Minimum Order Quantity: 1
- Price: Contact Us
- Packaging Details: Carton packaging 1 units per carton
- Delivery Time: 3-8 work days
- Payment Terms: T/T
- Supply Ability: 5000



Product Specification

- Applicable Industries: Hotel Restaurant Workshop School Hotels, Building Material Shops, Manufacturing Plant, Food & Beverage Factory, Restaurant, Retail, Construction Works , Food & Beverage Shops
- Electric Current Type: AC
- After-sales Service Provided: Online Support
- Place Of Origin: Guangdong, China
- Voltage: 220/380V
- Blade Material: Steel Plate
- Warranty: 1 Year
- Customized Support: OEM, ODM, OBM
- Casing Material: Superior Steel Plate
- Motor: 100% Copper Wires
- Feature: Low Noise, Little Vibration, Large Air Volume



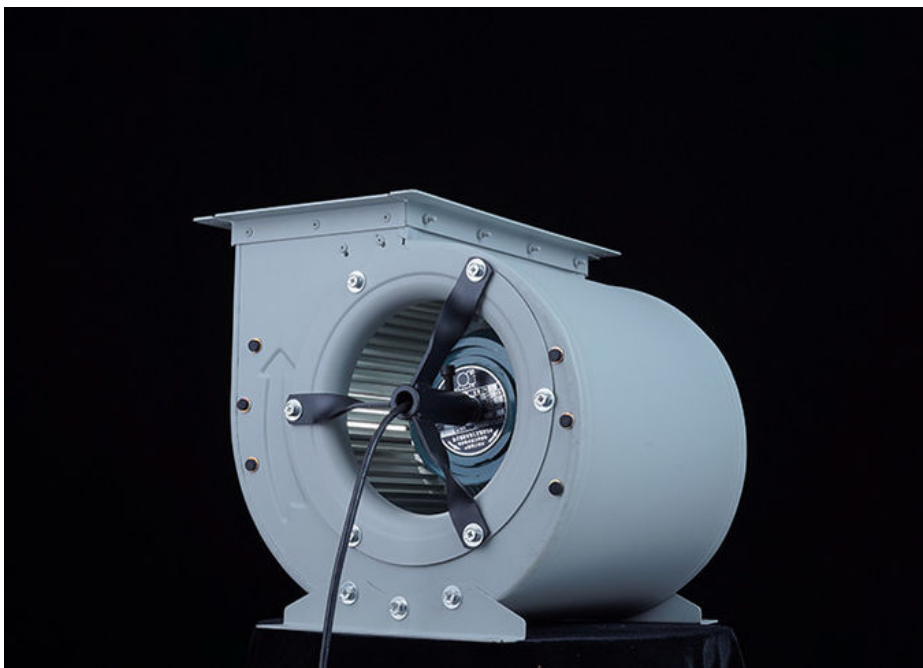
More Images



Product Description

Product Overview

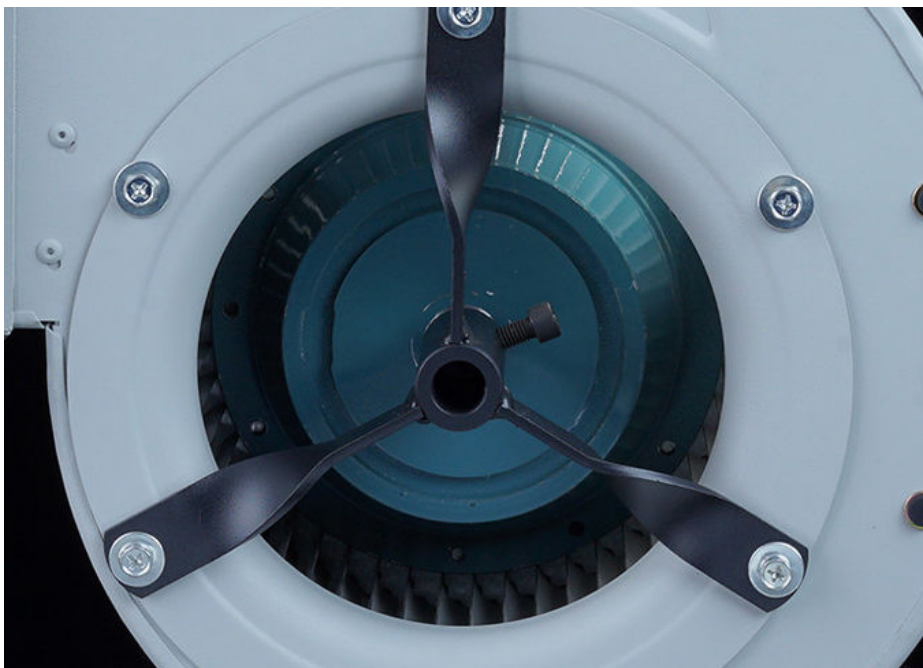
The Inlet Centrifugal Fan features an innovative air - intake configuration. It can absorb airflow simultaneously, which is a unique design element not commonly found in other fans. This design significantly enhances the airflow efficiency and pressure output. Additionally, it effectively balances axial forces, reducing both vibration and noise during operation.



Key Features

High - Efficiency Inlet Design

The balanced axial force design in this fan is a major advantage. It minimizes mechanical wear by ensuring that all parts of the fan operate under a more uniform stress distribution. As a result, it not only extends the fan's lifespan but also enhances its operational stability over the long term.



Sturdy Construction

In this centrifugal fan, the impeller is directly mounted on the outer rotor motor. This one - piece design eliminates the issues associated with secondary assembly, such as alignment errors and part mismatches. It guarantees a high level of structural integrity, making the fan more reliable in various working conditions.



Energy - Saving Capabilities

Equipped with EC motors, the fan achieves remarkable energy savings of 20 - 30%. These motors support PWM/0 - 10V speed control, allowing for precise adjustment of the airflow according to different requirements. The aerodynamically optimized blades further contribute to its performance. They not only reduce noise levels (below 65 dB) but also improve the overall efficiency of the fan.



Product Applications

Industrial Ventilation: It is suitable for applications like dust removal in factories, air supply for boiler combustion, and extraction of fumes. In these scenarios, the fan effectively maintains a clean and safe working environment.

HVAC Systems: Whether it is for air - conditioning units, cooling towers, or humidity control devices, the fan can meet the requirements of different HVAC applications, providing stable and efficient airflow regulation.

Material Handling: In the process of pneumatically conveying granular or powdered materials, the fan can generate the necessary air pressure and airflow, ensuring smooth material transfer.

Technical Advantages

Flexible Operating Range: The fan is equipped with an adjustable three - way valve. This unique design permits users to switch between single - inlet and double - inlet modes, enabling the fan to optimize its performance under different flow demands.

Convenient Maintenance: Access to the motor and impeller compartments is straightforward. This simplifies the inspection process and makes part replacement quicker, reducing downtime in case of maintenance needs.

Certifications: The fan complies with CE, CCC, and RoHS standards. These certifications confirm that the product is designed with safety and environmental protection in mind, ensuring its acceptability in both domestic and international markets.

Ordering Information

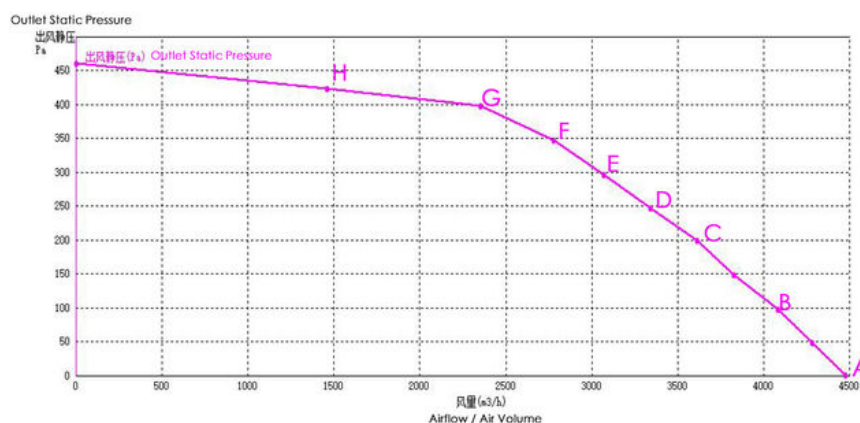
Standard models are ready for immediate shipment, which is beneficial for customers with urgent needs.

For custom - specified products, including different voltage requirements, various flange types, or anti - static coatings, there is a lead time of 15 - 30 days. This allows customers to get products tailored to their specific needs while planning their projects accordingly.

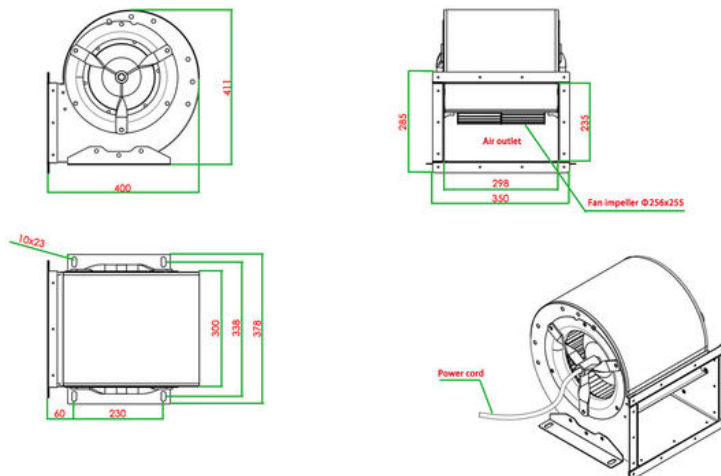
Product Performance Specifications

Model			DKT-2.55A-W		Fan Type			Centrifugal Fan		
Rated Voltage			380V		Frequency			50Hz		
Rated Power			0.8KW		Noise Level					
RPM (Revolutions Per Minute)			1400r/ min		Rated Current			2.3A		
No	Item	Units	A	B	C	D	E	F	G	H
1	Outlet Static Pressure	Pa	0.437	98.500	200.438	297.688	347.438	398.625	424.875	461.625
2	Dynamic Pressure	pa	425.652	354.585	277.415	200.112	163.804	117.457	45.341	0.000
3	Total Pressure	pa	426.089	453.085	477.853	497.799	511.242	516.082	470.216	461.625
4	Airflow/ Air Volume	m3/h	4471.251	4081.101	3610.176	3066.513	2775.231	2350.296	1460.532	0.000

Curve chart



Dimensions diagram



ZhongDian **Guangdong Zhongdian Jiajin Environmental Technology Co., Ltd.**

0085246403891

sales001@zd-fan.com

zd-fan.com

Xizi Industrial Zone, Lishui Town, Nanhai District, Foshan City, Guangdong Province, China