

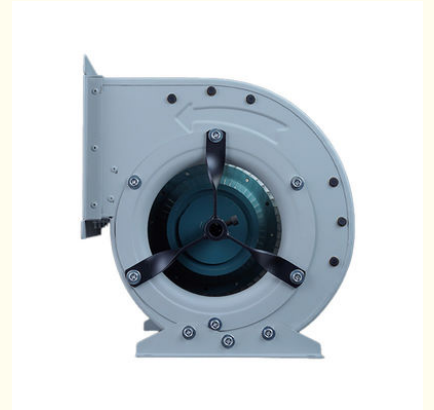
DKT Cabinet External Extractor Blowers Inlet Centrifugal Fan

Our Product Introduction

for more products please visit us on zd-fan.com

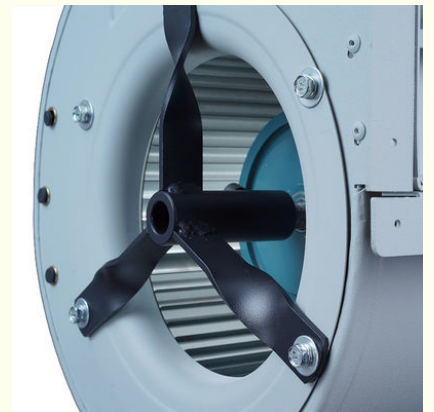
Basic Information

- Place of Origin: China Foshan
- Brand Name: Available for ODM
- Certification: CE
- Model Number: DKT-2.55A-W
- Minimum Order Quantity: 1
- Price: Contact Us
- Packaging Details: Carton packaging 1 units per carton
- Delivery Time: 3-8 work days
- Payment Terms: T/T
- Supply Ability: 5000



Product Specification

- Applicable Industries: Hotel Restaurant Workshop School Hotels, Building Material Shops, Manufacturing Plant, Food & Beverage Factory, Restaurant, Retail, Construction Works , Food & Beverage Shops
- Electric Current Type: AC
- After-sales Service Provided: Online Support
- Place Of Origin: Guangdong, China
- Voltage: 220/380V
- Blade Material: Steel Plate
- Warranty: 1 Year
- Customized Support: OEM, ODM, OBM
- Casing Material: Superior Steel Plate
- Motor: 100% Copper Wires
- Feature: Low Noise, Little Vibration, Large Air Volume



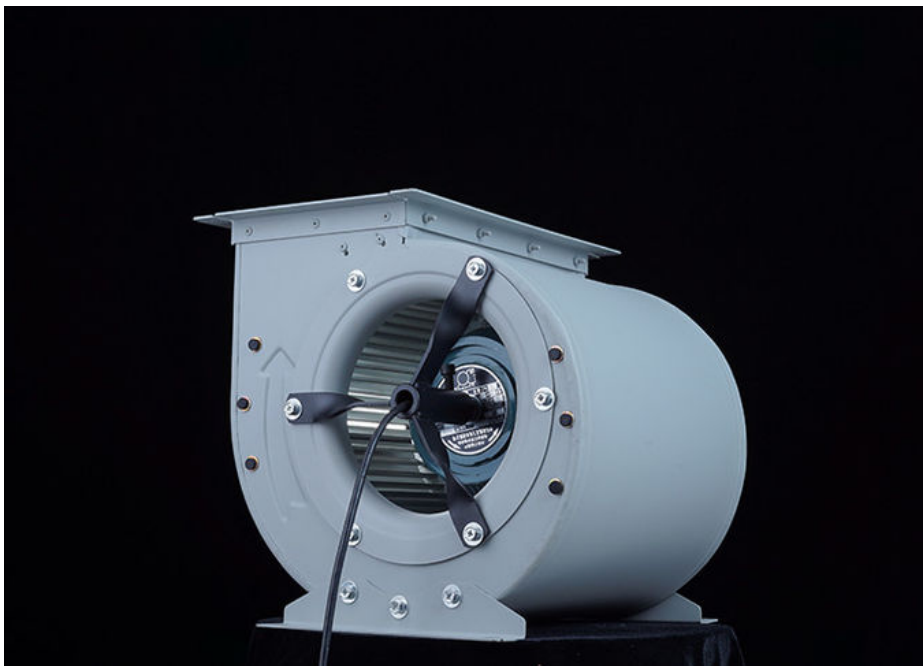
More Images



Product Description

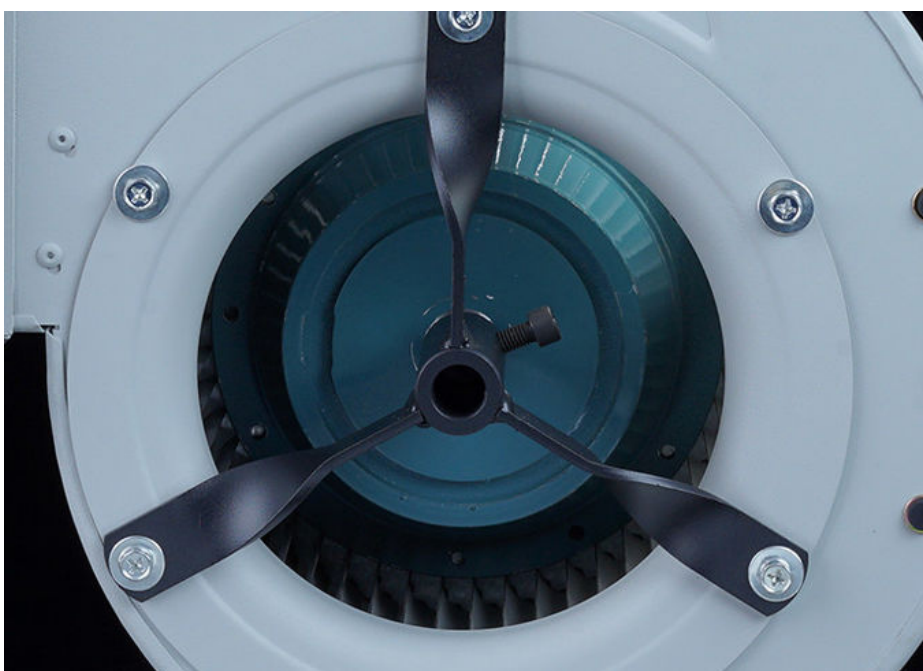
Product Applications:

The Inlet Centrifugal Fan adopts a air intake design, enabling simultaneous airflow absorption . This structure enhances airflow efficiency and pressure output while balancing axial forces for reduced vibration and noise . Ideal for industrial applications requiring high airflow and medium-to-high pressure, such as HVAC systems, ventilation, and material handling.



Inlet Efficiency

Balanced axial force minimizes mechanical wear and extends operational stability.



Robust Construction

Impeller directly mounted on an outer rotor motor, eliminating secondary assembly errors and ensuring high structural integrity .



Energy-Saving Design

EC motors reduce energy consumption by 20–30% while supporting PWM/0-10V speed control for precise airflow adjustment . Aerodynamically optimized blades lower noise levels (<65 dB) and improve efficiency



Applications

- Industrial Ventilation:** Dust removal, boiler combustion air supply, and fume extraction
- HVAC Systems:** Air conditioning, cooling towers, and humidity control units
- Material Handling:** Pneumatic conveying of granular or powdered materials

Technical Advantages

- Wide Operating Range:** Adjustable three-way valve design allows switching between single/double inlet modes, optimizing performance under varying flow demands
- Easy Maintenance:** Accessible motor and impeller compartments simplify inspection and part replacement
- Certifications:** Compliant with CE, CCC, and RoHS standards for safety and environmental protection

Ordering Information

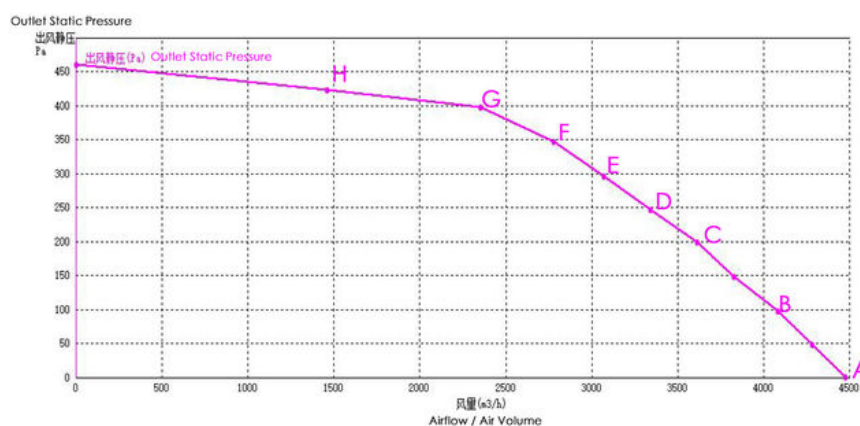
- Standard models available for immediate shipment.
- Custom specifications (e.g., voltage, flange types, anti-static coatings) require a 15–30-day lead time.

Product Performance Specifications

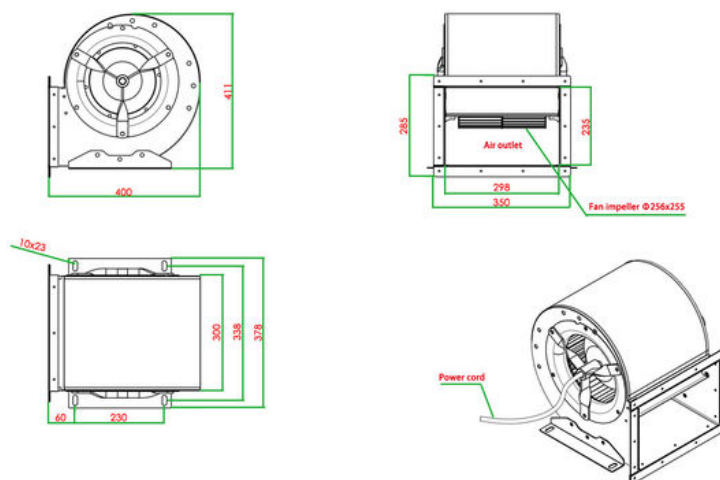
Model	DKT-2.55A-W	Fan Type	Centrifugal Fan
Rated Voltage	380V	Frequency	50Hz
Rated Power	0.8KW	Noise Level	

RPM (Revolutions Per Minute)			1400r/ min		Rated Current			2.3A		
No	Item	Units	A	B	C	D	E	F	G	H
1	Outlet Static Pressure	Pa	0.437	98.500	200.438	297.688	347.438	398.625	424.875	461.625
2	Dynamic Pressure	pa	425.652	354.585	277.415	200.112	163.804	117.457	45.341	0.000
3	Total Pressure	pa	426.089	453.085	477.853	497.799	511.242	516.082	470.216	461.625
4	Airflow/ Air Volume	m3/h	4471.251	4081.101	3610.176	3066.513	2775.231	2350.296	1460.532	0.000

Curve chart



Dimensions diagram



ZhongDian **Guangdong Zhongdian Jiajin Environmental Technology Co., Ltd.**

0085246403891

sales001@zd-fan.com

zd-fan.com

Xizi Industrial Zone, Lishui Town, Nanhai District, Foshan City, Guangdong Province, China