

Wholesale Positive Pressure Exhaust Ventilation Fan Ceiling Duct

Our Product Introduction

for more products please visit us on zd-fan.com

Basic Information

- Place of Origin: China Foshan
- Brand Name: Available for ODM
- Certification: CE
- Model Number: BPT10-12
- Minimum Order Quantity: 1
- Price: Contact Us
- Packaging Details: Carton packaging 1 units per carton
- Delivery Time: 3-8 work days
- Payment Terms: T/T
- Supply Ability: 5000

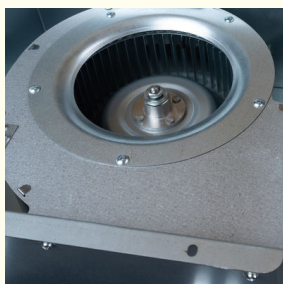
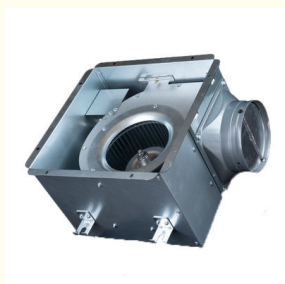


Product Specification

- Function: Ceiling Air Flow Ventilator System
- Mounting: Ceiling
- Voltage: 220V
- Power: 24-100W
- Air Volume: 120-600 M³/h
- Core Components: Motor, Engine
- Noise: 32-58 DB
- Static Pressure(Pa): 80-220 Pa
- Motor: 100% Copper Coil
- Duct Size: 100 Mm / 150 Mm
- Applications: Hotel / School / Residence / Office / Bathroom
- Highlight: Ceiling Duct Exhaust Ventilation Fan, Positive Pressure Exhaust Ventilation Fan, Wholesale Exhaust Ventilation Fan



More Images



Product Overview

This ceiling-mounted positive pressure exhaust fan is a premium ventilation solution tailored for expansive commercial and industrial spaces. Engineered to efficiently expel stale air, it concurrently draws in fresh air, ensuring optimal indoor air quality. Boasting high-efficiency ventilation capabilities and a robust construction, this system stands as the perfect choice for diverse environments demanding reliable air management.

Advantage

Buildings with ventilation systems for large exhaust air volume requirements.

Shell welded design, beautiful, durable.

Metal housing, flame retardant required.

Capacitive starter motor, low input power, high performance, durable and reliable

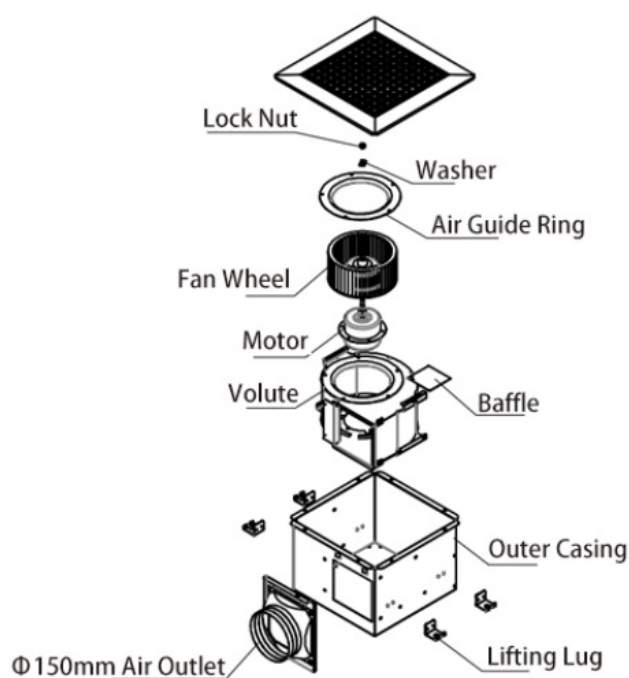
A variety of beautiful design panels, a variety of choices.

The product includes mounting clips, easy to install.

Metal wind wheel, good dynamic balance, centrifugal wind wheel operation quiet, stable.

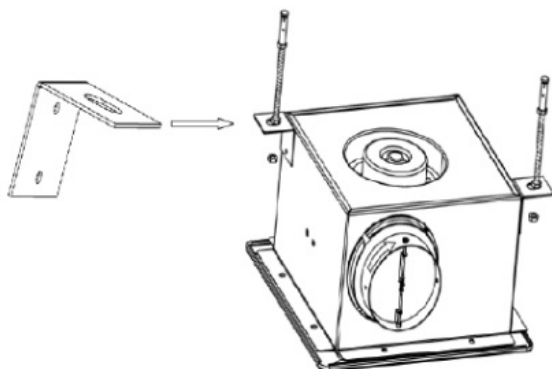
Detachable air outlet, convenient pipe connection, product installation and maintenance.

General assembly Drawing

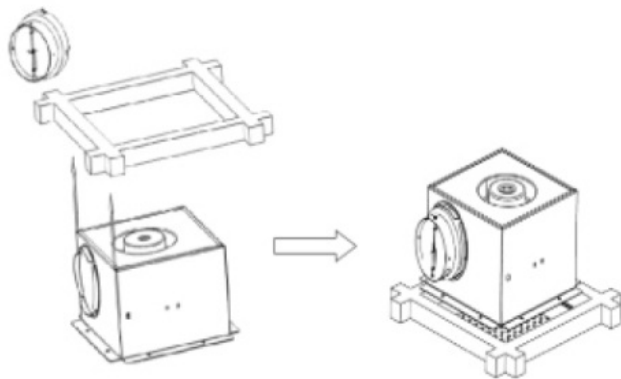


Product Installation Method

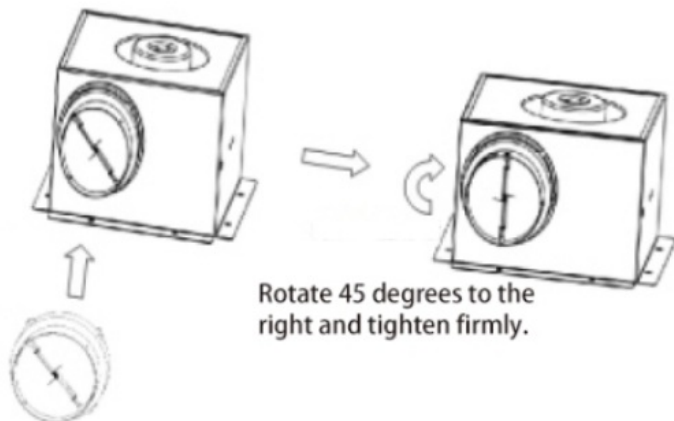
1. Begin by building a sturdy rectangular frame, ensuring it is solidly anchored to the ceiling above.



2. Firmly affix the storage unit (or enclosure) to the pre-installed frame.



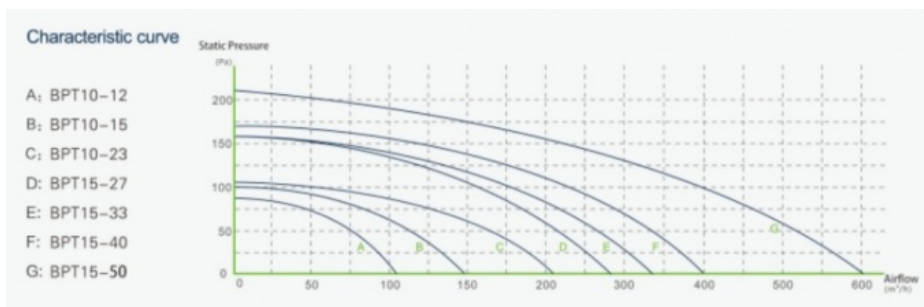
3. Carefully line up the ventilation duct connector with the arrow direction indicated and securely attach it using a twist-lock mechanism to the designated air outlet port on the cabinet, ensuring proper airflow connection.



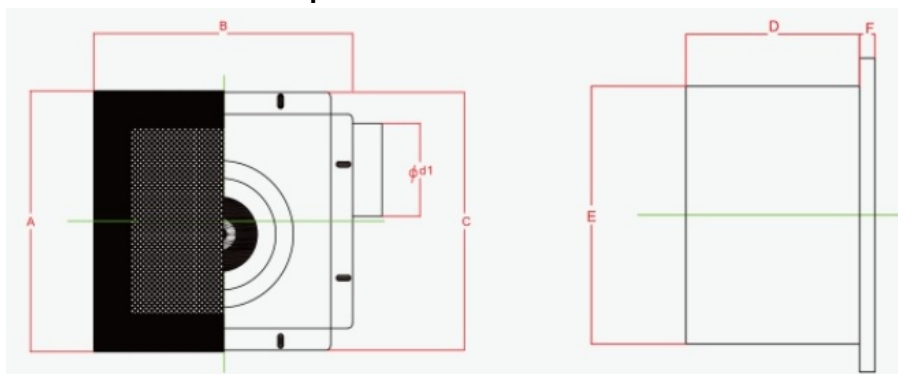
Rotate 45 degrees to the right and tighten firmly.

Fasten the air duct interface to the air inlet and outlet.

Product Performance Curve



Product Performance Specifications



Model Num	A	B	C	D	E	F	Cutout Dimensions
BPT10-12	280	280	277	155	230	14	230*240
BPT10-15	280	280	277	155	230	14	230*240
BPT10-21	280	280	277	155	230	14	230*240

BPT15-27	380	380	341	224	306	14	306*306
BPT15-33	380	380	341	224	306	14	306*306
BPT15-40	380	380	341	224	306	14	306*306
BPT15-60	380	380	341	224	306	14	306*306

 **ZhongDian** **Guangdong Zhongdian Jiajin Environmental Technology Co., Ltd.**



0085246403891



sales001@zd-fan.com



zd-fan.com

Xizi Industrial Zone, Lishui Town, Nanhai District, Foshan City, Guangdong Province, China