

## Silent Copper Motor Ventilation Extractor Fan Ceiling Mount Bathroom Suction Exhaust Fan

Our Product Introduction

for more products please visit us on [zd-fan.com](http://zd-fan.com)

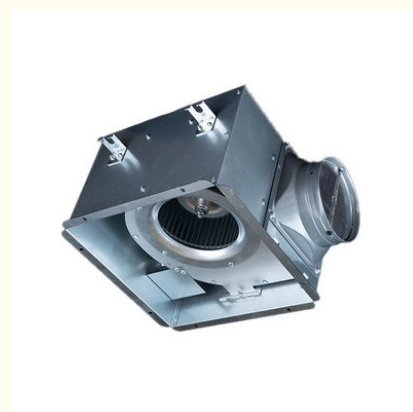
### Basic Information

- Place of Origin: China Foshan
- Brand Name: Available for ODM
- Certification: CE
- Model Number: BPT10-12
- Minimum Order Quantity: 1
- Price: Contact Us
- Packaging Details: Carton packaging 1 units per carton
- Delivery Time: 3-8 work days
- Payment Terms: T/T
- Supply Ability: 5000

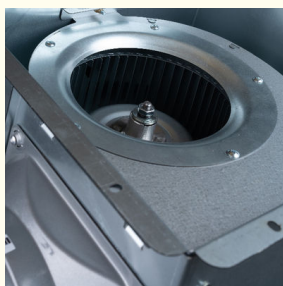


### Product Specification

- Type: Ceiling Exhaust Duct Blower Fan
- Applicable Industries: Exhaust Ventilation
- Mounting: Ceiling Mounted
- Motor: Capacitor Copper Wire Motor
- Noise: MAX 45 DB
- Voltage (V): 220V
- Air Flow: 120-500 M³/h
- MOQ: 30 Set
- Feature: Low Noise, High Air Pressure, High Quality Motor
- Highlight: Silent Copper Motor Ventilation Extractor Fan, Bathroom Suction Ventilation Extractor Fan, Ceiling Mount Ventilation Extractor Fan



### More Images



## Product Description

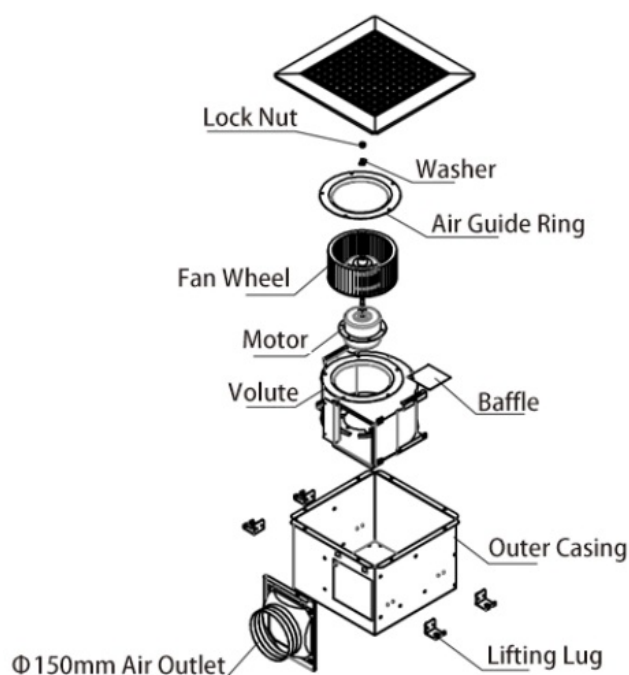
### Product Overview

Extraction fans efficiently eliminate humid air from bathrooms, laundries, washrooms, and toilets. They are available in a range of capacities to accommodate various spaces, from compact toilet areas to expansive indoor pools. These fans come in exhaust and in-line ventilation styles, with their main function being to remove moisture and direct it outside through ducting.

### Advantage

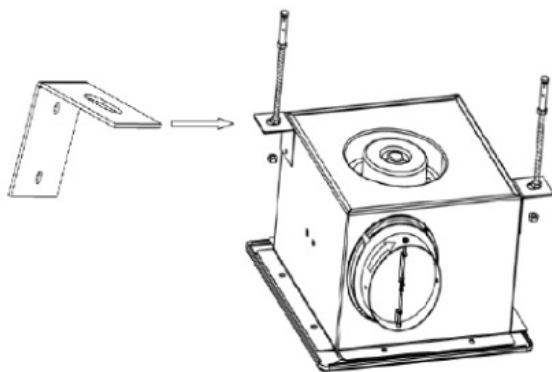
- \* Features an all-metal shell for straightforward air outlet installation.
- \* Equipped with a capacitor motor, ensuring longevity and durability.
- \* Includes overheat protection for added safety.
- \* Perfect for ceiling mounting and effortlessly connects to pipes/ducts, simplifying both installation and maintenance.

### General assembly Drawing

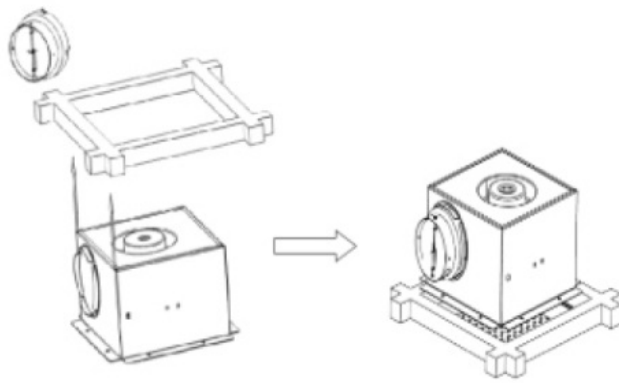


### Product Installation Method

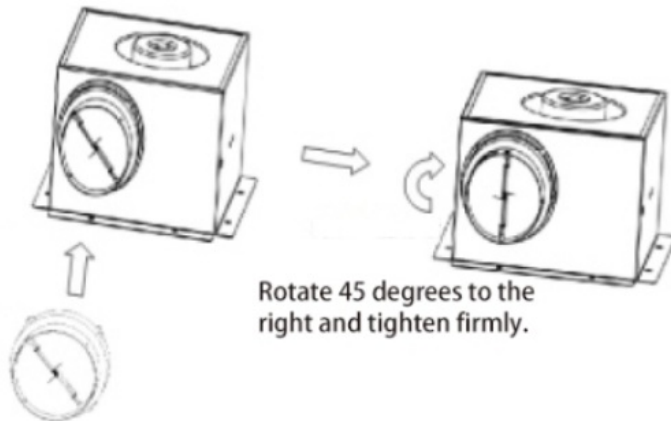
1. Begin by building a sturdy rectangular frame, ensuring it is solidly anchored to the ceiling above.



2. Firmly affix the storage unit (or enclosure) to the pre-installed frame.



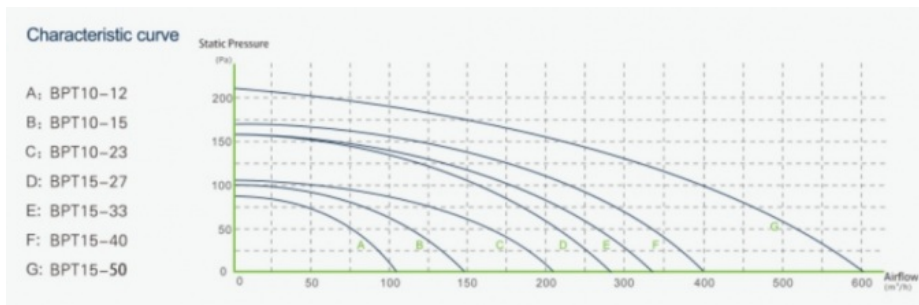
3. Carefully line up the ventilation duct connector with the arrow direction indicated and securely attach it using a twist-lock mechanism to the designated air outlet port on the cabinet, ensuring proper airflow connection.



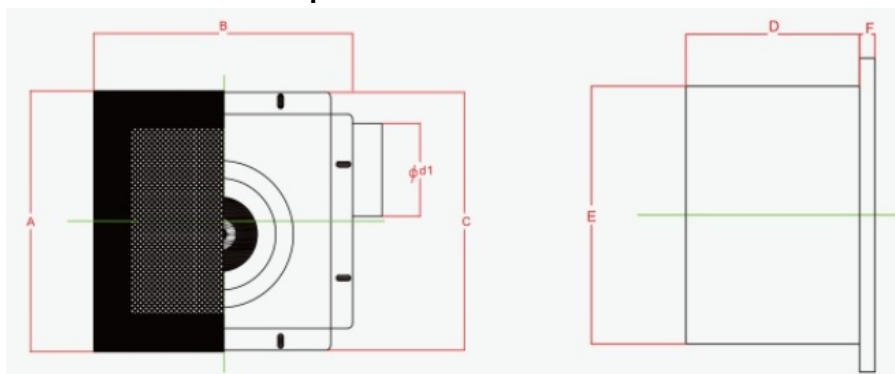
Rotate 45 degrees to the right and tighten firmly.

Fasten the air duct interface to the air inlet and outlet.

## Product Performance Curve



## Product Performance Specifications



Model Num	A	B	C	D	E	F	Cutout Dimensions
BPT10-12	280	280	277	155	230	14	230*240
BPT10-15	280	280	277	155	230	14	230*240
BPT10-21	280	280	277	155	230	14	230*240

BPT15-27	380	380	341	224	306	14	306*306
BPT15-33	380	380	341	224	306	14	306*306
BPT15-40	380	380	341	224	306	14	306*306
BPT15-60	380	380	341	224	306	14	306*306

 **ZhongDian** **Guangdong Zhongdian Jiajin Environmental Technology Co., Ltd.**



0085246403891



sales001@zd-fan.com



zd-fan.com

Xizi Industrial Zone, Lishui Town, Nanhai District, Foshan City, Guangdong Province, China