

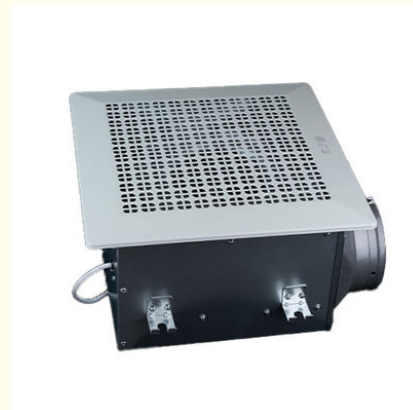
Mute Metal Case Ventilation Powerful Exhaust Ceiling Air Flow Fan

Our Product Introduction

for more products please visit us on zd-fan.com

Basic Information

- Place of Origin: China Foshan
- Brand Name: Available for ODM
- Certification: CE
- Model Number: BPT10-12
- Minimum Order Quantity: 1
- Price: Contact Us
- Packaging Details: Carton packaging 1 units per carton
- Delivery Time: 3-8 work days
- Payment Terms: T/T
- Supply Ability: 5000

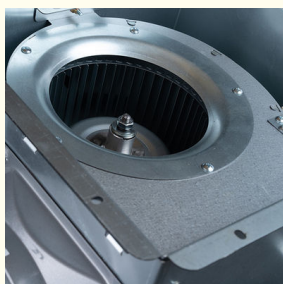
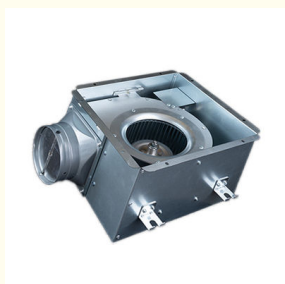


Product Specification

- Type: Ceiling Mounted Fan
- Applicable Industries: Hotels, Building Material Shops, Home Use, Retail, Construction Works
- Mounting: Ceiling Mounted
- Motor: Capacitor Copper Wire Motor
- Noise: MAX 45 DB
- Voltage (V): 220V
- Air Flow: 120-500 M³/h
- MOQ: 30 Set
- Highlight: **Powerful Exhaust Ceiling Air Flow Fan, Metal Case Ceiling Air Flow Fan**



More Images



Product Description

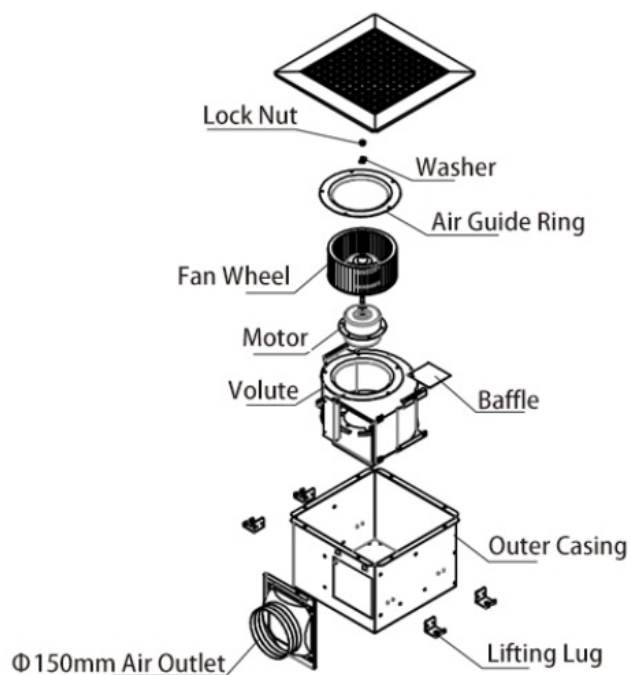
Product Overview

Extraction fans effectively remove humid air from bathrooms, laundries, washrooms, and toilets. They come in various capacities to suit different spaces, from small toilet areas to large indoor pools. Available in exhaust and in-line ventilation styles, these fans primarily function to expel moisture outside through ducting.

Advantage

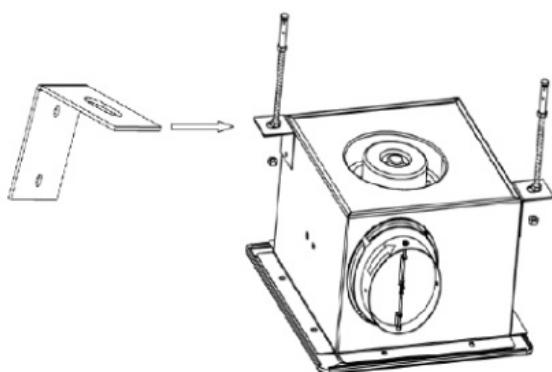
- * All-metal shell for easy installation of air outlets.
- * Capacitor motor with extended lifespan.
- * Equipped with overheat protection for enhanced safety.
- * Ideal for ceiling mounting and seamless integration with pipes/ducts, making it easy to install and maintain.

General assembly Drawing

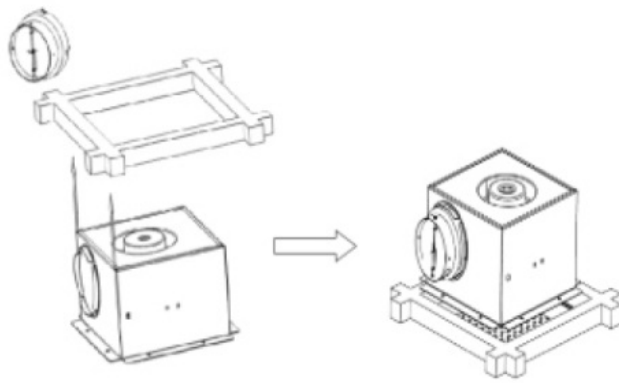


Product Installation Method

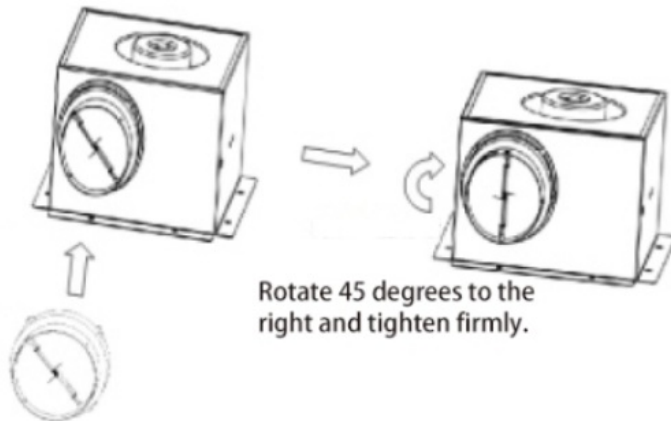
1. Begin by building a sturdy rectangular frame, ensuring it is solidly anchored to the ceiling above.



2. Firmly affix the storage unit (or enclosure) to the pre-installed frame.



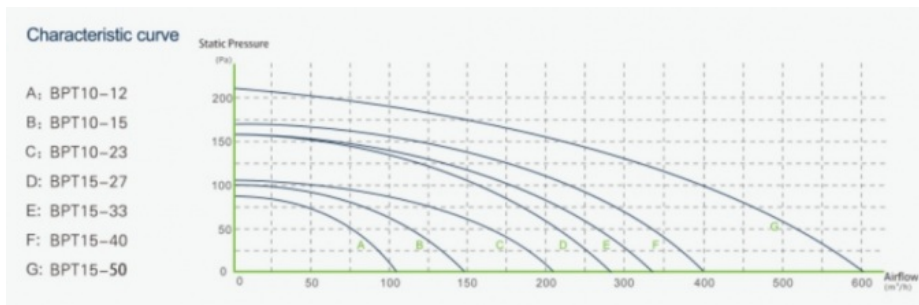
3. Carefully line up the ventilation duct connector with the arrow direction indicated and securely attach it using a twist-lock mechanism to the designated air outlet port on the cabinet, ensuring proper airflow connection.



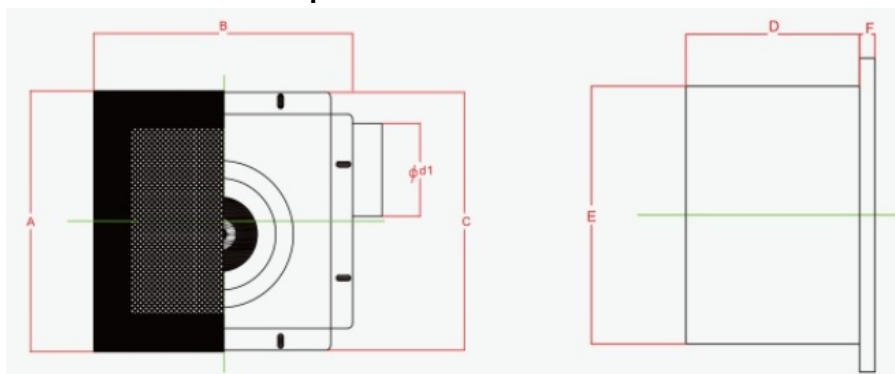
Rotate 45 degrees to the right and tighten firmly.

Fasten the air duct interface to the air inlet and outlet.

Product Performance Curve



Product Performance Specifications



Model Num	A	B	C	D	E	F	Cutout Dimensions
BPT10-12	280	280	277	155	230	14	230*240
BPT10-15	280	280	277	155	230	14	230*240
BPT10-21	280	280	277	155	230	14	230*240

BPT15-27	380	380	341	224	306	14	306*306
BPT15-33	380	380	341	224	306	14	306*306
BPT15-40	380	380	341	224	306	14	306*306
BPT15-60	380	380	341	224	306	14	306*306

 **ZhongDian** **Guangdong Zhongdian Jiajin Environmental Technology Co., Ltd.**



0085246403891



sales001@zd-fan.com



zd-fan.com

Xizi Industrial Zone, Lishui Town, Nanhai District, Foshan City, Guangdong Province, China