

Industrial Ceiling Positive Pressure Exhaust Fan Fresh Air Extraction Ventilation Systems

Our Product Introduction

for more products please visit us on zd-fan.com

Basic Information

- Place of Origin: China Foshan
- Brand Name: Available for ODM
- Certification: CE
- Model Number: BPT10-12
- Minimum Order Quantity: 1
- Price: Contact Us
- Packaging Details: Carton packaging 1 units per carton
- Delivery Time: 3-8 work days
- Payment Terms: T/T
- Supply Ability: 5000

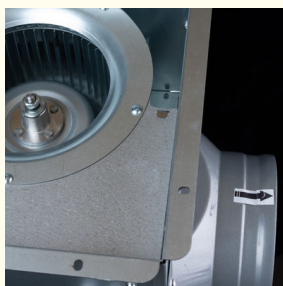
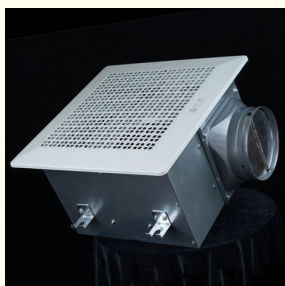


Product Specification

- Function: Ceiling Air Flow Ventilator System
- Mounting: Ceiling
- Voltage: 220V
- Power: 24-100W
- Air Volume: 120-600 M³/h
- Core Components: Motor, Engine
- Noise: 32-58 DB
- Static Pressure(Pa): 80-220 Pa
- Motor: 100% Copper Coil
- Duct Size: 100 Mm / 150 Mm
- Applications: Hotel / School / Residence / Office / Bathroom
- Highlight: Fresh Air Ceiling Exhaust Fan,
Industrial Ceiling Exhaust Fan,
Positive Pressure Ceiling Exhaust Fan



More Images



Product Description

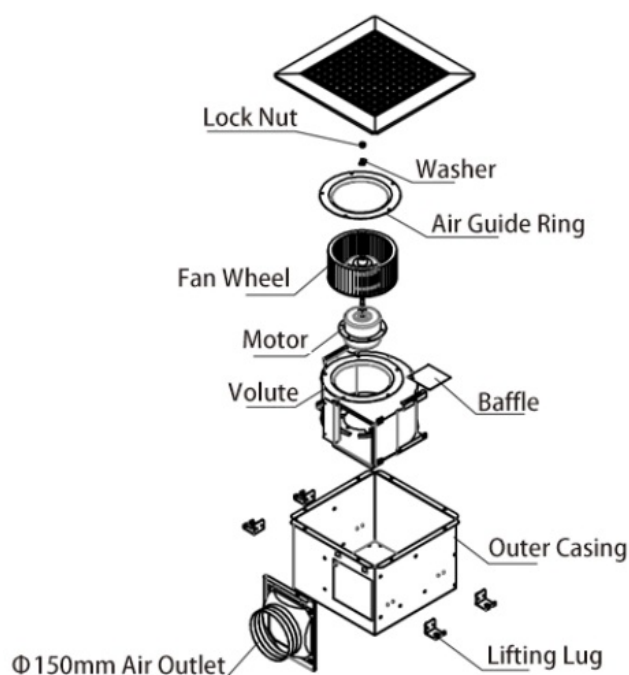
Product Overview

Premium Ventilation fan, painted metal grille for maximum durability. Painted metal housing for great resistance to corrosion. High quality motor and engineered blower wheel for quietest and most powerful performance. Lowest dB levels for environmental comfort. Highest static pressure performance for long duct runs.

Application

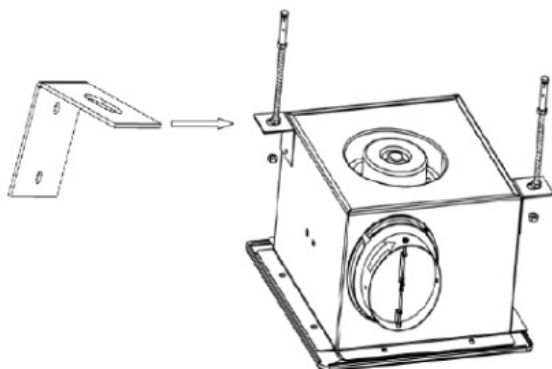
Ceiling cassette exhaust fans provide a convenient solution to the exhaust needs of every home, kitchen, bedroom, toilets, etc. It effectively adjusts the indoor quality of the air by controlling the humidity, dirt, odor or smoke within a space. These are widely used in every home, office, super markets, restaurant, hotel, cinema, hospital and other public places.

General assembly Drawing

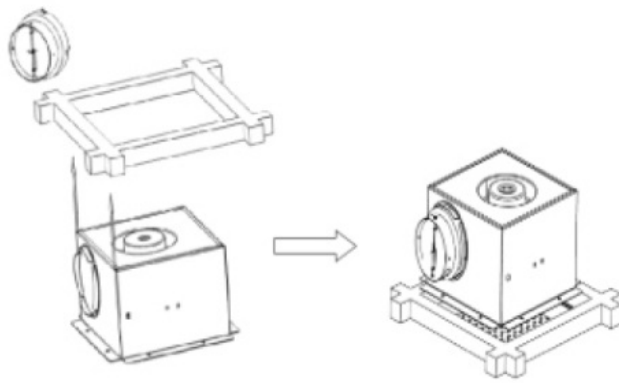


Product Installation Method

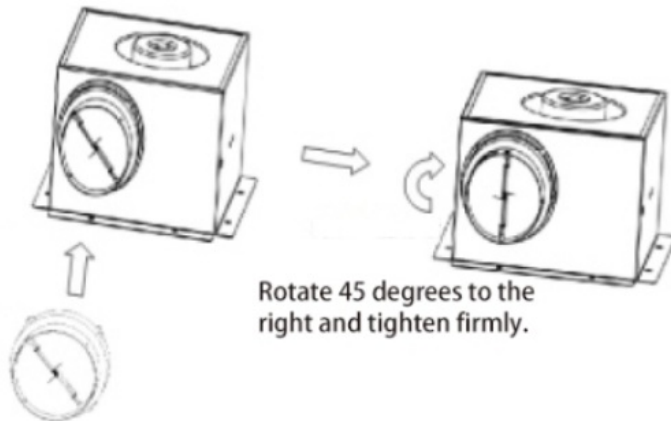
1. Begin by building a sturdy rectangular frame, ensuring it is solidly anchored to the ceiling above.



2. Firmly affix the storage unit (or enclosure) to the pre-installed frame.



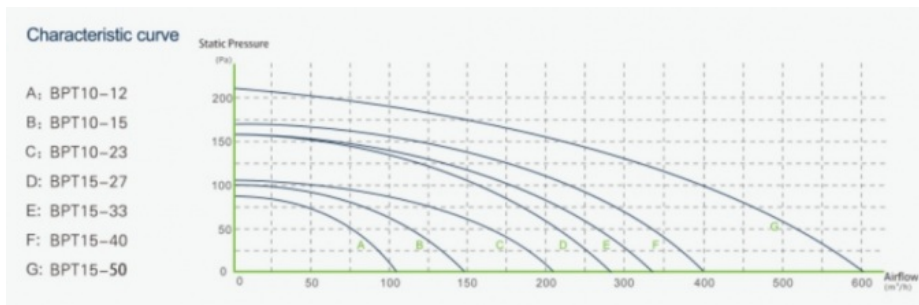
3. Carefully line up the ventilation duct connector with the arrow direction indicated and securely attach it using a twist-lock mechanism to the designated air outlet port on the cabinet, ensuring proper airflow connection.



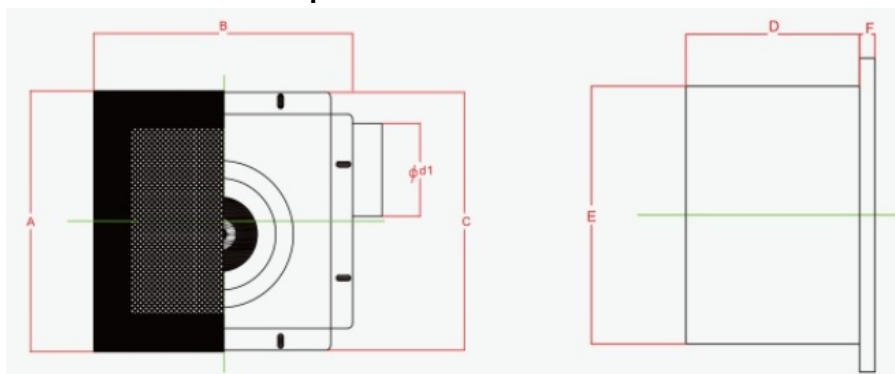
Rotate 45 degrees to the right and tighten firmly.

Fasten the air duct interface to the air inlet and outlet.

Product Performance Curve



Product Performance Specifications



Model Num	A	B	C	D	E	F	Cutout Dimensions
BPT10-12	280	280	277	155	230	14	230*240
BPT10-15	280	280	277	155	230	14	230*240
BPT10-21	280	280	277	155	230	14	230*240

BPT15-27	380	380	341	224	306	14	306*306
BPT15-33	380	380	341	224	306	14	306*306
BPT15-40	380	380	341	224	306	14	306*306
BPT15-60	380	380	341	224	306	14	306*306

 **ZhongDian** **Guangdong Zhongdian Jiajin Environmental Technology Co., Ltd.**



0085246403891



sales001@zd-fan.com



zd-fan.com

Xizi Industrial Zone, Lishui Town, Nanhai District, Foshan City, Guangdong Province, China