

## Indoor Air Quality Solutions Ceiling Duct Fresh Air Exhaust Ventilation Fan

Our Product Introduction

for more products please visit us on [zd-fan.com](http://zd-fan.com)

### Basic Information

- Place of Origin: China Foshan
- Brand Name: Available for ODM
- Certification: CE
- Model Number: BPT10-12
- Minimum Order Quantity: 1
- Price: Contact Us
- Packaging Details: Carton packaging 1 units per carton
- Delivery Time: 3-8 work days
- Payment Terms: T/T
- Supply Ability: 5000

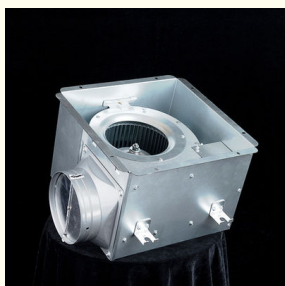


### Product Specification

- Function: Air Flow Ventilation Fan
- Mounting: Ceiling Mounting
- Voltage: 220V / 50 Hz
- Power: 24-58W
- Air Volume: 120 - 500m<sup>3</sup>/h
- Core Components: Motor, Engine
- Noise: 32 - 45 DB
- Static Pressure(Pa): 80-175 Pa
- Motor: Copper Coil
- Duct Size: 100 Mm / 150 Mm
- Applications: Hotel / School / Residence / Office / Bathroom
- Highlight: Ceiling Duct Fresh Air Ventilation Fan, Indoor Fresh Air Exhaust Ventilation Fan



### More Images



## Product Description

### Product Overview

Ceiling fans improve indoor air quality by regulating humidity, eliminating odors, and reducing dust accumulation. They are suitable for a variety of settings including malls, hotels, restaurants, residential homes, and office spaces.

### Advantage

The metal casing satisfies the fire resistance requirement.

A capacitor-run induction motor is used, providing low power consumption, high performance, longevity, and reliability.

A detachable cassette-type discharge opening is designed for easy ducting, installation, and maintenance.

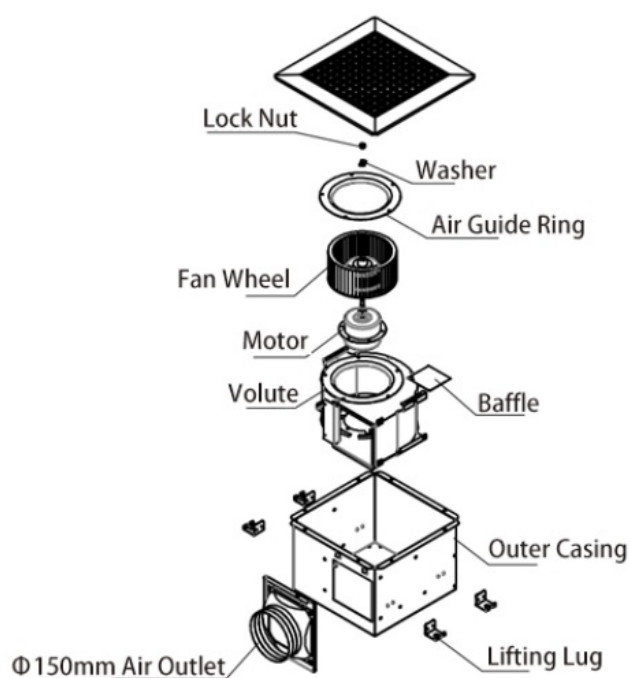
Various aesthetically pleasing design louvers are available for selection.

Mounting feet are included for convenient suspension and ceiling installation.

The same height level of inlet and outlet allows for an intermediate position suitable for the ducting system.

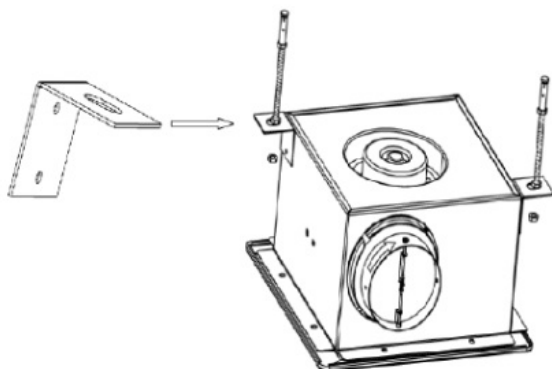
A well-balanced, high-grade aluminum high-pressure forward curved centrifugal fan ensures quiet and stable operation.

### General assembly Drawing

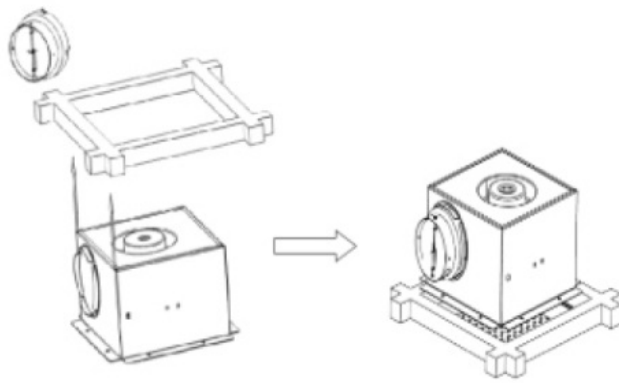


### Product Installation Method

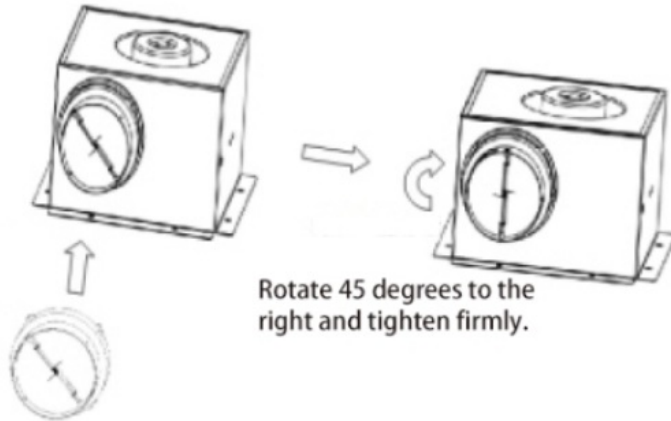
1. Start by constructing a strong rectangular framework, ensuring it is securely fastened to the ceiling above.



2. Firmly secure the storage unit (or enclosure) to the pre-installed frame.

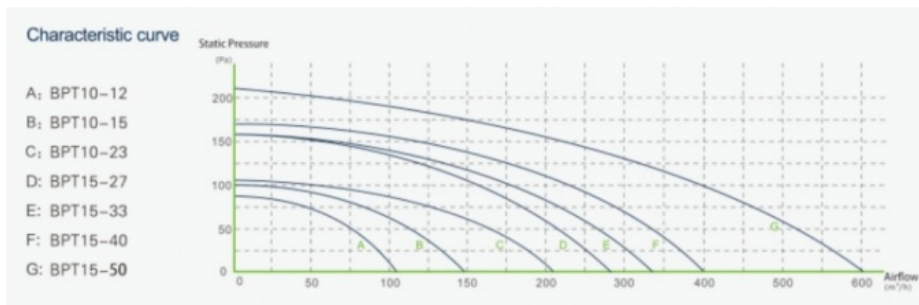


3. Carefully align the ventilation duct connector with the arrow direction indicated and firmly attach it using a twist-lock mechanism to the specified air outlet port on the cabinet, ensuring proper airflow connection.

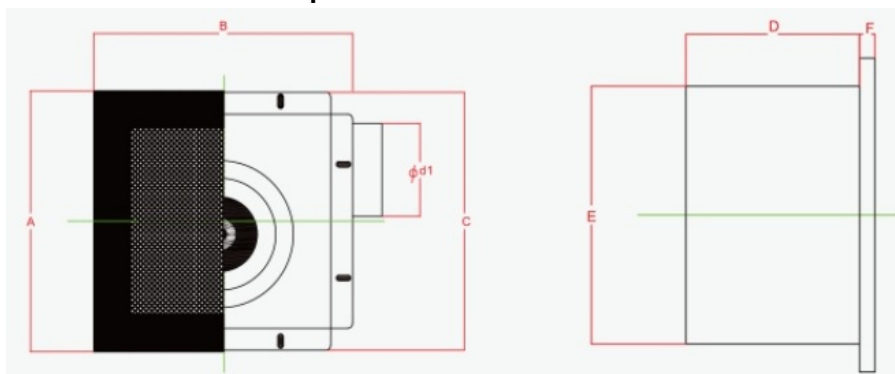


Fasten the air duct interface to the air inlet and outlet.

## Product Performance Curve



## Product Performance Specifications



Model Num	A	B	C	D	E	F	Cutout Dimensions
BPT10-12	280	280	277	155	230	14	230*240
BPT10-15	280	280	277	155	230	14	230*240
BPT10-21	280	280	277	155	230	14	230*240

BPT15-27	380	380	341	224	306	14	306*306
BPT15-33	380	380	341	224	306	14	306*306
BPT15-40	380	380	341	224	306	14	306*306
BPT15-60	380	380	341	224	306	14	306*306

 **ZhongDian** **Guangdong Zhongdian Jiajin Environmental Technology Co., Ltd.**



0085246403891



sales001@zd-fan.com



zd-fan.com

Xizi Industrial Zone, Lishui Town, Nanhai District, Foshan City, Guangdong Province, China