

Indoor Air Quality Solutions Fresh Air Extractor Fan Ventilator

Our Product Introduction

for more products please visit us on zd-fan.com

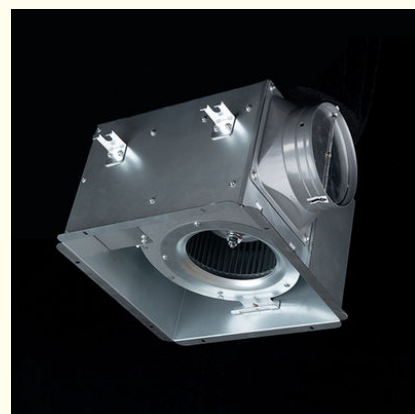
Basic Information

- Place of Origin: China Foshan
- Brand Name: Available for ODM
- Certification: CE
- Model Number: BPT10-12
- Minimum Order Quantity: 1
- Price: Contact Us
- Packaging Details: Carton packaging 1 units per carton
- Delivery Time: 3-8 work days
- Payment Terms: T/T
- Supply Ability: 5000

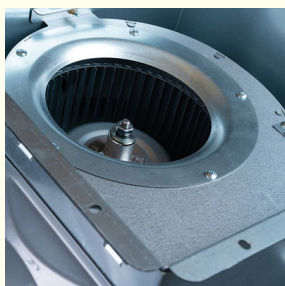


Product Specification

- Function: Air Flow Circulation
- Mounting: Ceiling
- Voltage: 220V
- Power: 24-100W
- Air Volume: 120-600 M³/h
- Core Components: Motor, Engine
- Noise: 32-58 DB
- Static Pressure(Pa): 80-220 Pa
- Motor: 100% Copper Coil
- Duct Size: 100 Mm / 150 Mm
- Applications: Hotel / School / Residence / Office / Bathroom
- Highlight: Fresh Air Extractor Fan Ventilator, Indoor Air Quality Solutions Fan Ventilator, Fresh Air Extractor Fan



More Images



Product Description

Product Overview

Full metal ceiling fans improve indoor air quality by regulating humidity, eliminating odors, and reducing dust. These versatile fixtures are suitable for various environments including malls, hotels, restaurants, homes, and offices.

Advantage

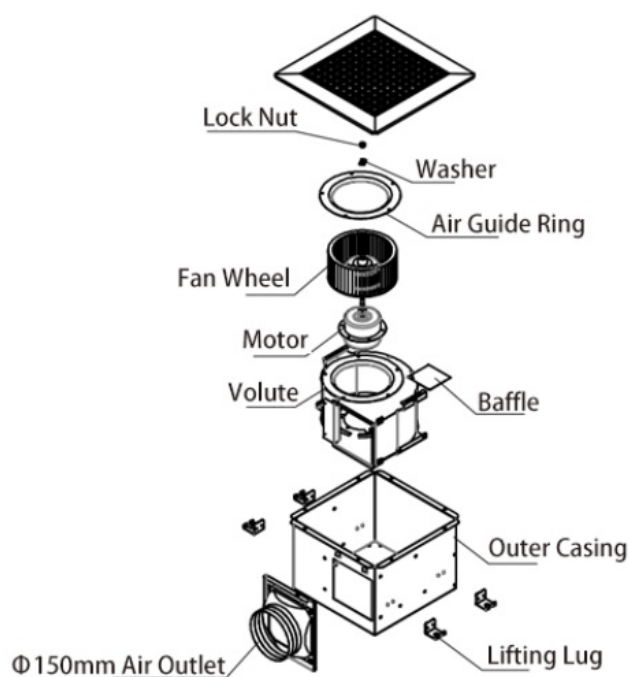
Reliability: Our motor fans are designed to exceed the lifespan of conventional AC motor models by up to 70%, saving you both time and money on replacements.

Efficiency: Our motor fans boast some of the highest efficiency rates among ventilation fans. All our Delta ventilation fans are meticulously engineered to operate continuously for at least 70,000 hours.

Less Noise: Our motor fans are expertly crafted for minimal sound output.

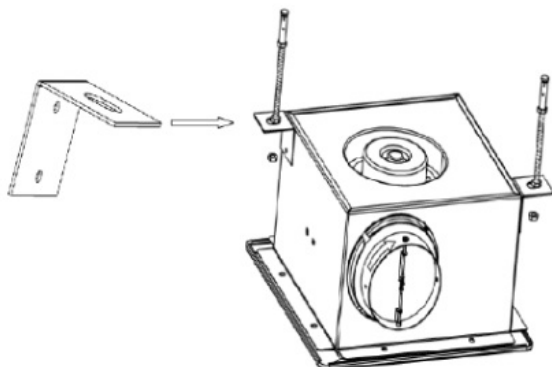
Less Power consumption: Our motor fans consume up to 74% less power compared to standard AC motor exhaust fans.

General assembly Drawing

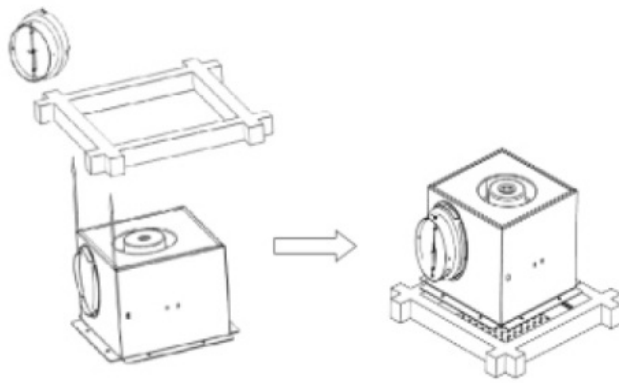


Product Installation Method

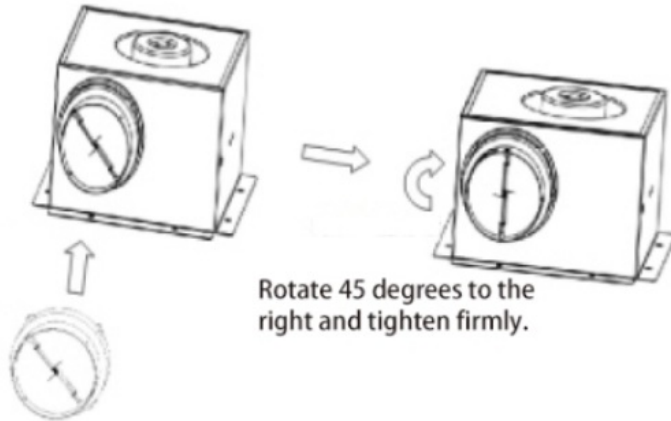
1. Start by constructing a robust rectangular frame, making sure it is firmly attached to the ceiling above.



2. Securely attach the storage unit (or enclosure) to the already installed frame.



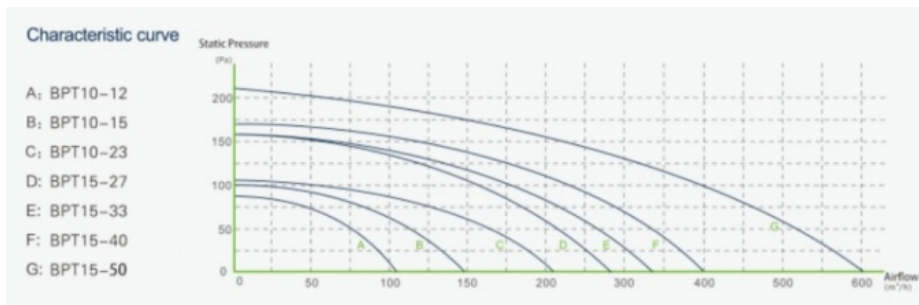
3. Carefully align the ventilation duct connector with the arrow direction indicated and firmly attach it using a twist-lock mechanism to the specified air outlet port on the cabinet, ensuring correct airflow connection.



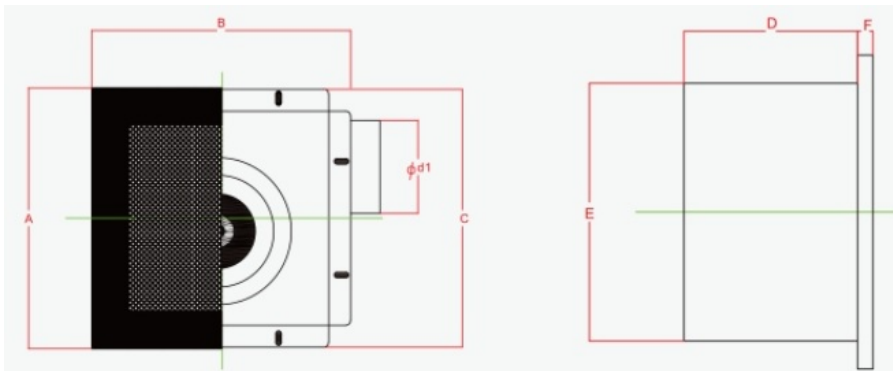
Rotate 45 degrees to the right and tighten firmly.

Fasten the air duct interface to the air inlet and outlet.

Product Performance Curve



Product Performance Specifications



| Model Num | A | B | C | D | E | F | Cutout Dimensions |
|-----------|-----|-----|-----|-----|-----|----|-------------------|
| BPT10-12 | 280 | 280 | 277 | 155 | 230 | 14 | 230*240 |
| BPT10-15 | 280 | 280 | 277 | 155 | 230 | 14 | 230*240 |
| BPT10-21 | 280 | 280 | 277 | 155 | 230 | 14 | 230*240 |

| | | | | | | | |
|----------|-----|-----|-----|-----|-----|----|---------|
| BPT15-27 | 380 | 380 | 341 | 224 | 306 | 14 | 306*306 |
| BPT15-33 | 380 | 380 | 341 | 224 | 306 | 14 | 306*306 |
| BPT15-40 | 380 | 380 | 341 | 224 | 306 | 14 | 306*306 |
| BPT15-60 | 380 | 380 | 341 | 224 | 306 | 14 | 306*306 |

 **ZhongDian** **Guangdong Zhongdian Jiajin Environmental Technology Co., Ltd.**



0085246403891



sales001@zd-fan.com



zd-fan.com

Xizi Industrial Zone, Lishui Town, Nanhai District, Foshan City, Guangdong Province, China