

Restroom Low Noise Centrifugal Impeller All Metal Box Air Ventilation Fans

Our Product Introduction

for more products please visit us on zd-fan.com

Basic Information

- Place of Origin: China Foshan
- Brand Name: Available for ODM
- Certification: CE
- Model Number: BPT10-12
- Minimum Order Quantity: 1
- Price: Contact Us
- Packaging Details: Carton packaging 1 units per carton
- Delivery Time: 3-8 work days
- Payment Terms: T/T
- Supply Ability: 5000

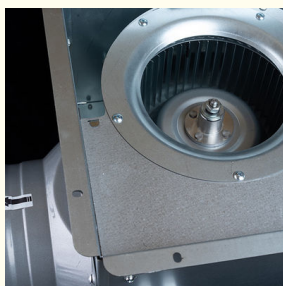
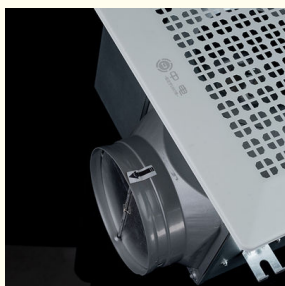


Product Specification

- Function: Air Flow Circulation
- Mounting: Ceiling
- Voltage: 220V
- Power: 24-100W
- Air Volume: 120-600 M³/h
- Core Components: Motor, Engine
- Noise: 32-58 DB
- Static Pressure(Pa): 80-220 Pa
- Motor: 100% Copper Coil
- Duct Size: 100 Mm / 150 Mm
- Applications: Hotel / School / Residence / Office / Bathroom
- Highlight: **All Metal Box Air Ventilation Fans, Low Noise Air Ventilation Fans, Restroom Air Ventilation Fans**



More Images



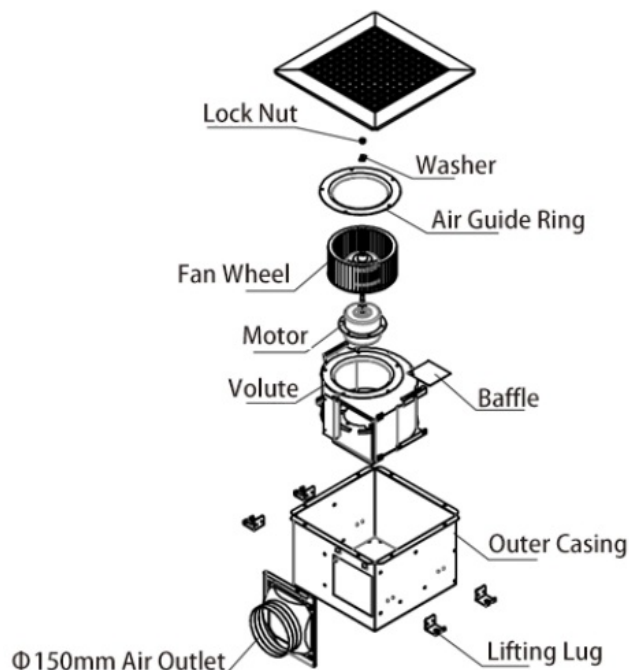
Product Description

Product Overview

Metal ceiling fans enhance indoor air by controlling humidity, removing odors, and decreasing dust. Versatile for malls, hotels, restaurants, homes, and offices.

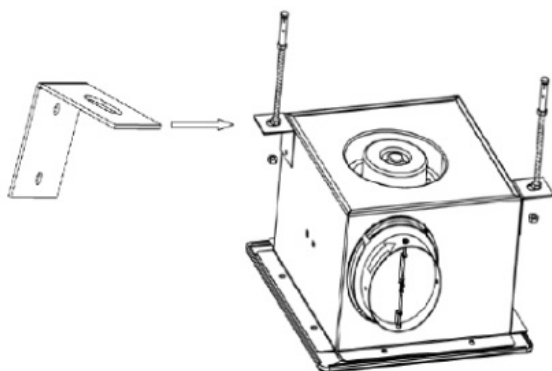
The exhaust fan's performance hinges on its motor with premium bearings for smooth, quiet operation and longevity. Encased in a sleek all-metal casing with a durable metal fan wheel, it merges functionality with modern elegance. The innovative fan wheel design retains shape over time, ensuring efficiency and durability.

General assembly Drawing

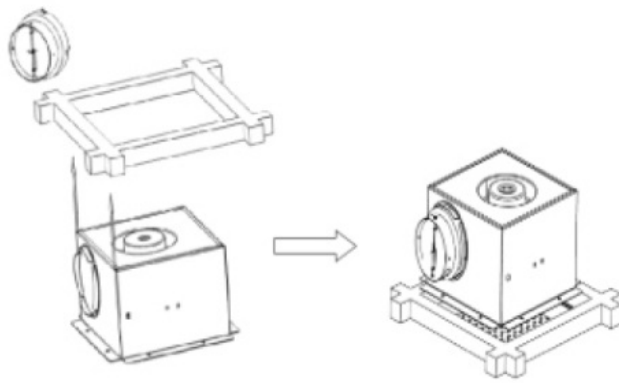


Product Installation Method

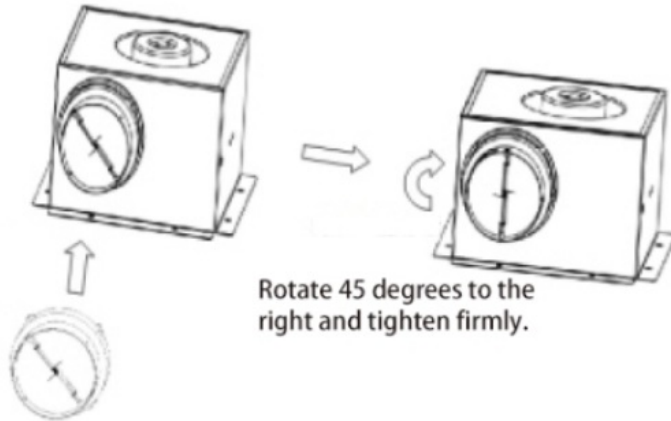
1. Begin by building a sturdy rectangular frame, ensuring it is securely attached to the ceiling above.



2. Firmly affix the storage unit (or enclosure) to the pre-installed frame.



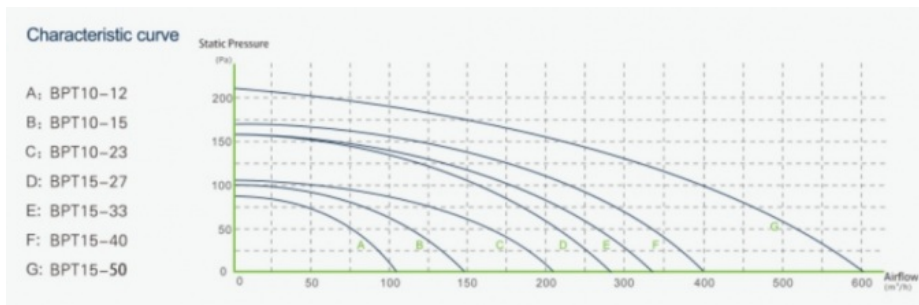
3. Align the ventilation duct connector with the arrow direction indicated and firmly attach it using a twist-lock mechanism to the specified air outlet port on the cabinet, ensuring correct airflow connection.



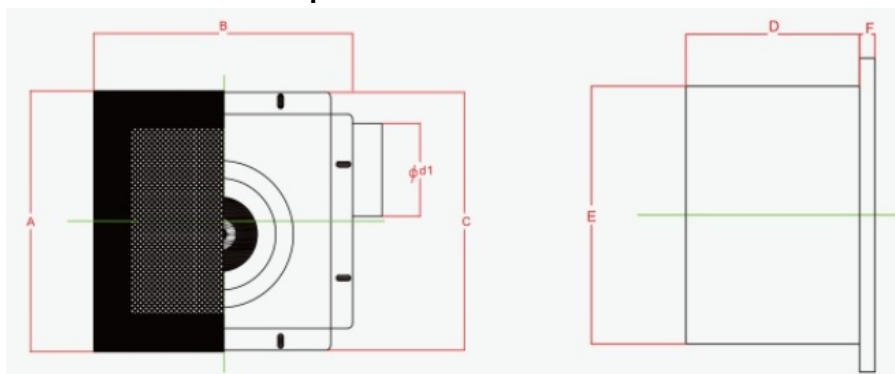
Rotate 45 degrees to the right and tighten firmly.

Fasten the air duct interface to the air inlet and outlet.

Product Performance Curve



Product Performance Specifications



Model Num	A	B	C	D	E	F	Cutout Dimensions
BPT10-12	280	280	277	155	230	14	230*240
BPT10-15	280	280	277	155	230	14	230*240
BPT10-21	280	280	277	155	230	14	230*240

BPT15-27	380	380	341	224	306	14	306*306
BPT15-33	380	380	341	224	306	14	306*306
BPT15-40	380	380	341	224	306	14	306*306
BPT15-60	380	380	341	224	306	14	306*306

 **ZhongDian** **Guangdong Zhongdian Jiajin Environmental Technology Co., Ltd.**



0085246403891



sales001@zd-fan.com



zd-fan.com

Xizi Industrial Zone, Lishui Town, Nanhai District, Foshan City, Guangdong Province, China