

## Whole House Bathroom Inline Ceiling Mount High Flow Air Ventilation Fans

Our Product Introduction

for more products please visit us on [zd-fan.com](http://zd-fan.com)

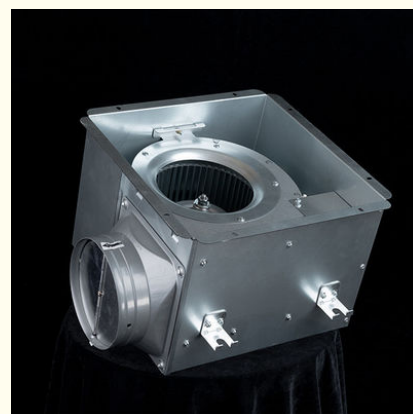
### Basic Information

- Place of Origin: China Foshan
- Brand Name: Available for ODM
- Certification: CE
- Model Number: BPT10-12
- Minimum Order Quantity: 1
- Price: Contact Us
- Packaging Details: Carton packaging 1 units per carton
- Delivery Time: 3-8 work days
- Payment Terms: T/T
- Supply Ability: 5000

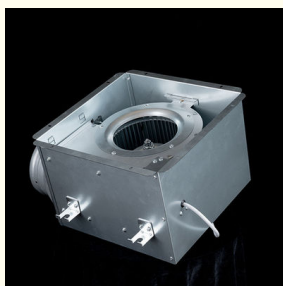


### Product Specification

- Function: Air Flow Circulation
- Mounting: Ceiling
- Voltage: 220V
- Power: 24-100W
- Air Volume: 120-600 M<sup>3</sup>/h
- Core Components: Motor, Engine
- Noise: 32-58 DB
- Static Pressure(Pa): 80-220 Pa
- Motor: 100% Copper Coil
- Duct Size: 100 Mm / 150 Mm
- Applications: Hotel / School / Residence / Office / Bathroom
- Highlight: **High Flow Air Ventilation Fans,  
Bathroom Air Ventilation Fans,  
Whole house Air Ventilation Fans**



### More Images



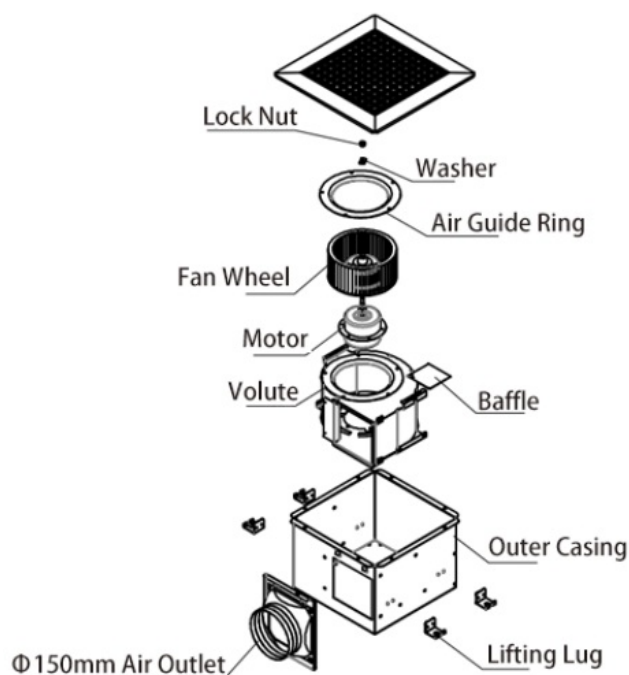
## Product Description

### Product Overview

Metal ceiling fans have become essential fixtures in contemporary indoor environments, serving as vital ventilation solutions. By efficiently managing humidity levels, eliminating odors, and reducing dust accumulation, these fans significantly enhance the quality of indoor air, making it fresher and cleaner. Their versatility allows them to be seamlessly integrated into a variety of settings including shopping malls, hotels, restaurants, residential homes, offices, and more.

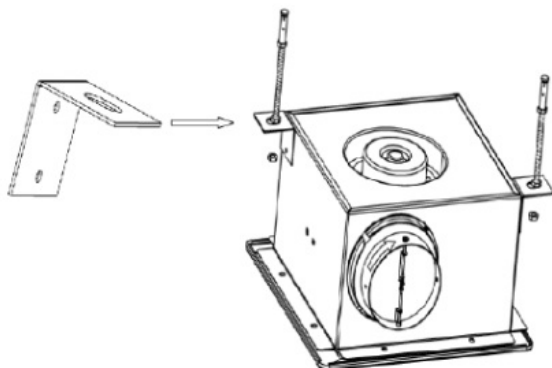
Central to the exhaust fan's performance is its motor, which incorporates premium bearings for smooth and quiet operation, ensuring a longer lifespan. Encased in a sleek all-metal housing and equipped with a durable metal fan wheel, this exhaust fan not only delivers exceptional functionality but also adds a touch of modern elegance to any space. The innovative design of the fan wheel ensures that it maintains its shape over extended periods of use, thereby preserving both the efficiency and longevity of the exhaust fan.

### General assembly Drawing

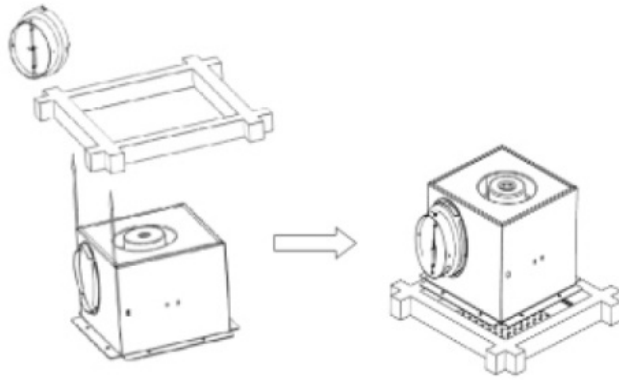


### Product Installation Method

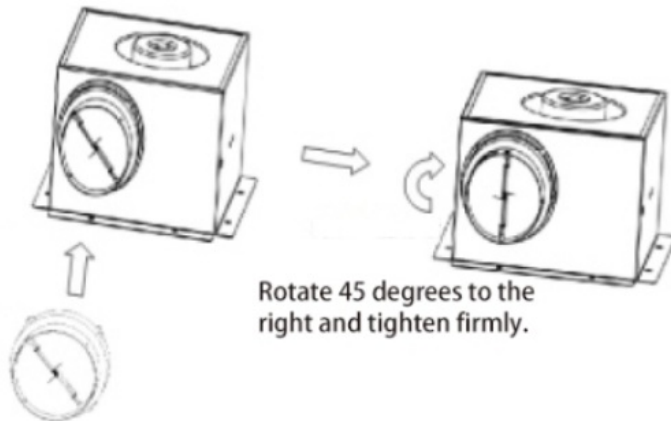
1. Begin by crafting a sturdy rectangular wooden framework, ensuring it is securely attached to the overhead ceiling structure.



2. Proceed to mount the storage unit (or enclosure) firmly onto the pre-installed wooden frame.



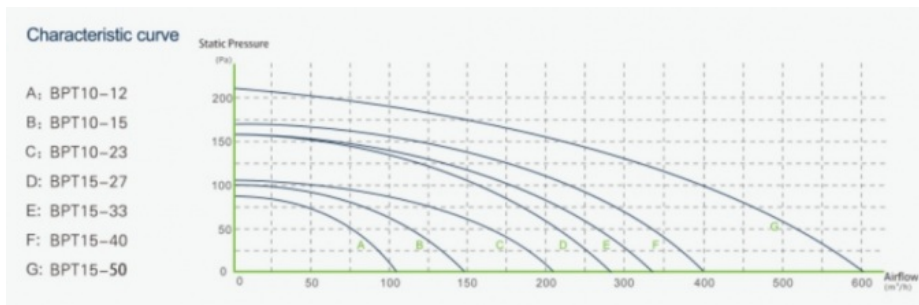
3. Carefully orient the ventilation duct connector following the indicated arrow direction and securely engage it with a twist-lock mechanism onto the designated air outlet port of the cabinet, facilitating proper airflow connection.



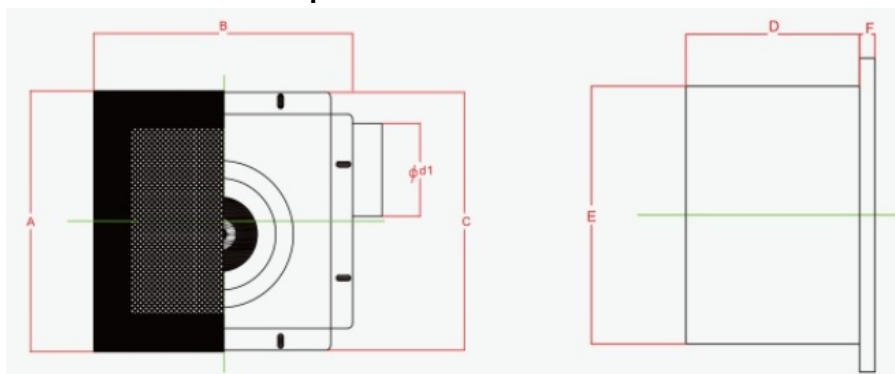
Rotate 45 degrees to the right and tighten firmly.

Fasten the air duct interface to the air inlet and outlet.

## Product Performance Curve



## Product Performance Specifications



Model Num	A	B	C	D	E	F	Cutout Dimensions
BPT10-12	280	280	277	155	230	14	230*240
BPT10-15	280	280	277	155	230	14	230*240
BPT10-21	280	280	277	155	230	14	230*240

BPT15-27	380	380	341	224	306	14	306*306
BPT15-33	380	380	341	224	306	14	306*306
BPT15-40	380	380	341	224	306	14	306*306
BPT15-60	380	380	341	224	306	14	306*306

 **ZhongDian** **Guangdong Zhongdian Jiajin Environmental Technology Co., Ltd.**



0085246403891



sales001@zd-fan.com



zd-fan.com

Xizi Industrial Zone, Lishui Town, Nanhai District, Foshan City, Guangdong Province, China