

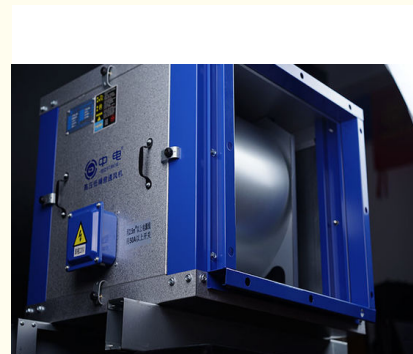
## Floorstanding Cabinet Centrifugal Fan Temperature Ventilation For Hotel 380V

Our Product Introduction

for more products please visit us on [zd-fan.com](http://zd-fan.com)

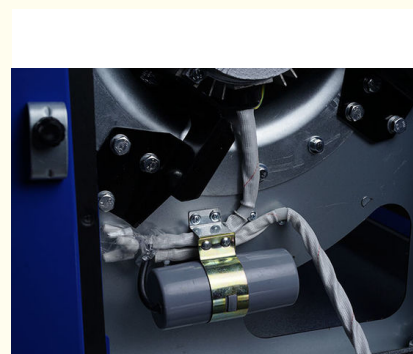
### Basic Information

- Place of Origin: China Foshan
- Brand Name: Available for ODM
- Certification: CE
- Model Number: DT13-48
- Minimum Order Quantity: 1
- Price: Contact Us
- Packaging Details: Carton packaging 1 units per carton
- Delivery Time: 3-8 work days
- Payment Terms: T/T
- Supply Ability: 5000

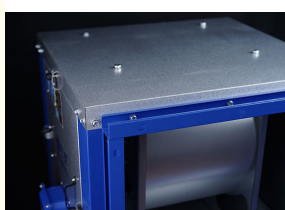


### Product Specification

- Applicable Industries: Building Material Shops
- Electric Current Type: AC
- After-sales Service Provided: Online Support
- Place Of Origin: China Foshan
- Voltage: 220V/380V
- Customized Support: OEM
- Mounting: FREE STANDING
- Warranty: 1 Year
- Core Components: Motor
- Application: Hotel, Restaurant, Auditorium, Movie Theater
- Weight: 58KG
- Highlight: Floorstanding Cabinet Centrifugal Fan,  
380V hotel Cabinet Centrifugal Fan,  
Floorstanding ventilation centrifugal fan



### More Images



## Product Description

### Product Applications

**Industrial Ventilation:**

**Applications:** "Used in industrial settings such as paint shops, welding workshops, and other production areas."

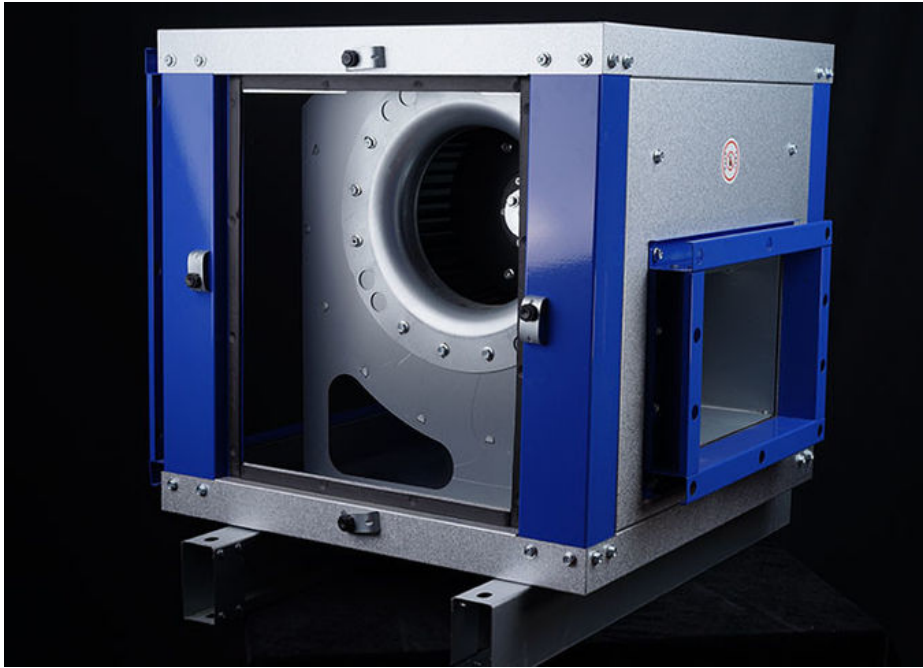
**Function:** "Removes harmful gases, dust, and excess heat generated during industrial processes. It helps maintain a safe and healthy work environment, protecting workers from exposure to hazardous substances."

**Kitchen Smoke Extraction:**

**Applications:** "Suitable for use in restaurants, dining halls, and food processing facilities."

**Function:** "Efficiently extracts smoke, grease, and odors produced during cooking, preventing the accumulation of kitchen fumes and maintaining cleanliness in the kitchen. It also helps avoid environmental pollution caused by cooking fumes."

**Summary:** The cabinet box type centrifugal fan is versatile and essential across various settings, from improving indoor air quality in public and commercial buildings to ensuring safety during emergencies and maintaining industrial and kitchen environments. Its effectiveness in air circulation, smoke extraction, and ventilation makes it a crucial component for creating healthy and safe environments in diverse applications.



### Product Motor

**Motor Protection and Efficiency Features****1. Superior Protection:**

**IP54 Rating:** "The motor is rated IP54, indicating excellent protection against dust and water ingress. This ensures reliable operation even in harsh environments, such as outdoor settings or in industrial conditions with high dust and humidity."

**2. High Efficiency and Energy Savings:**

**Efficient Power Conversion:** "The motor is designed to efficiently convert electrical energy into mechanical energy, reducing energy losses during operation. This careful power design helps prevent energy waste, achieving significant energy savings."

**Optimal Power Matching:** "Proper power matching prevents excessive energy consumption and further minimizes operational costs by aligning power requirements with energy usage."

**3. High Reliability:**

**Stable Operation:** "The motor's well-designed power output ensures stable performance, reducing the likelihood of failures due to overload or insufficient power."

**Extended Lifespan:** "The IP54 protection also contributes to a longer motor lifespan, lowering maintenance costs and enhancing overall reliability."

**4. Versatile Adaptability:**

**Wide Application Range:** "Available in various power ratings, the IP54-rated motor can meet the needs of diverse devices. Whether for small household appliances or large industrial equipment, there is an appropriate motor power rating available."

**Flexible Use:** "Its broad adaptability makes it suitable for a range of applications, ensuring reliable performance across different settings."

**Summary:** The IP54-rated motor offers exceptional protection, efficiency, and reliability for a variety of applications. Its ability to prevent dust and water ingress, combined with high energy efficiency and stable operation, makes it ideal for both industrial and commercial use. With its versatile adaptability and extended lifespan, this motor is a cost-effective and reliable choice for diverse operational needs.



## Product Fan Wheels

### Upgraded Forward-Curved Multi-Blade Fan Wheels

#### 1. Efficient Aerodynamic Design:

**Enhanced Airflow Output:** "The forward-curved design allows the fan wheel to capture and accelerate airflow more effectively. Compared to traditional fan wheels, it generates higher air pressure and airflow at the same rotational speed, thereby improving air delivery efficiency."

**Optimized Airflow Path:** "The shape and arrangement of the fan blades are meticulously designed to guide the airflow through smoother paths, reducing turbulence and energy loss. This design not only enhances performance but also decreases operational noise."

#### 2. Outstanding Performance Characteristics:

**High-Speed Compatibility:** "Forward-curved multi-blade fan wheels are capable of operating stably at higher speeds without excessive vibration or noise. This makes them suitable for applications requiring high airflow and pressure, such as ventilation systems and air conditioning equipment."

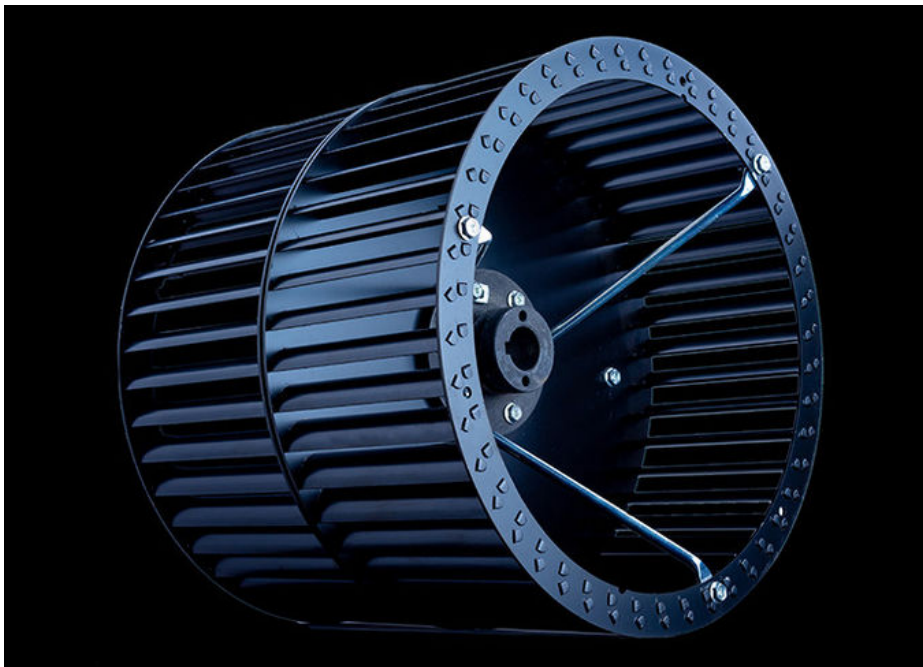
**Excellent Balance Performance:** "Precision balancing ensures that the fan wheel runs smoothly, minimizing wear on bearings and motors, and extending the equipment's lifespan. Well-balanced fan wheels also contribute to reduced noise and vibration, enhancing overall operational stability."

#### 3. Reliable Quality and Durability:

**Robust Structural Design:** "Multi-blade fan wheels are typically manufactured from high-strength materials, such as aluminum alloy or stainless steel, offering excellent corrosion and wear resistance. The forward-curved design also helps reduce stress concentration on the blades, improving overall strength and reliability."

**Long Service Life:** "With its efficient performance and reliable quality, the forward-curved multi-blade fan wheel maintains stable operation over extended periods, reducing maintenance and replacement frequency and lowering overall operating costs."

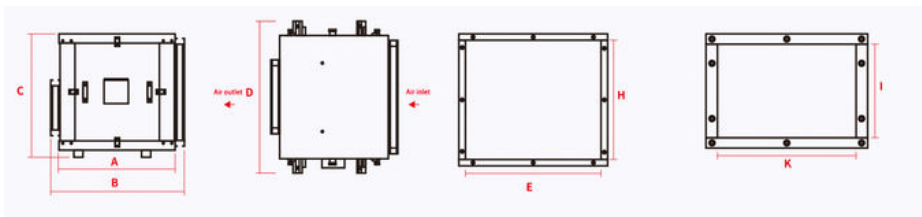
**Summary:** The upgraded forward-curved multi-blade fan wheel offers superior aerodynamic efficiency, high-speed stability, and excellent balance performance. Its robust construction and long service life make it an ideal choice for applications demanding high airflow and pressure while minimizing maintenance and operational costs.



## Product Specifications

Model Numb	Voltage	Ffrequenc y	Rotating speed	Alr volume	Total Pressure	Sound Level	Power	Weight
	(V)	(Hz)	(r/min)	(m2/h)	(Pa)	(dB)	(W)	(kg)
DT11-36	220/380	50	1450	3600	562	57	1.1	49
DT13-48	220/380	50	1450	4800	623	63	1.5	58
DT18-61	220/380	50	1450	6100	673	68	2.2	70
DT25-81	220/380	50	1450	8100	781	69	3	79
DT32-100	220/380	50	1450	10000	810	75	3.8	84
DT42-120	380	50	1450	12000	830	78	5	100
DT48-150	380	50	1450	15000	860	78	5.5	101
DT55-200	380	50	1450	20000	870	79	6	122

## Product Dimensions Diagram



## Product Dimensions Parameters

Model Numb	A	B(Lengt h)	C(Heigh t)	D(Width)	Air Inlet (Internal Diameter)		Air Outlet (Internal Diameter)		Flange Thickness
					E(Lengt h)	H(Heigh t)	I(Height )	K(Length )	
DT11-36	560	660	613	750	467	428	250	305	30x30
DT13-48	570	668	650	780	497	460	210	335	30x30
DT18-61	620	718	705	860	580	515	235	355	30x30
DT25-81	650	748	740	910	630	550	250	380	30x30
DT32-100	650	748	740	910	630	550	250	380	30x30

DT42-120	725	823	815	962	679	625	280	355	30x30
DT48-150	750	848	815	1000	717	625	380	405	30x30
DT55-200	780	879	840	1030	747	650	380	415	30x30

 **ZhongDian** **Guangdong Zhongdian Jiajin Environmental Technology Co., Ltd.**



0085246403891



sales001@zd-fan.com



zd-fan.com

Xizi Industrial Zone, Lishui Town, Nanhai District, Foshan City, Guangdong Province, China