

## 220V Axial Inline Bathroom Exhaust Fan vent Booster for Hotels

### Our Product Introduction

for more products please visit us on [zd-fan.com](http://zd-fan.com)

#### Basic Information

- Place of Origin: China Foshan
- Brand Name: Available for ODM
- Certification: CE
- Model Number: DJT20-90
- Minimum Order Quantity: 1
- Price: Contact Us
- Packaging Details: Carton packaging 1 units per carton
- Delivery Time: 3-8 work days
- Payment Terms: T/T
- Supply Ability: 5000

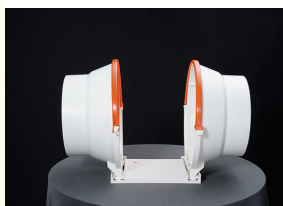


#### Product Specification

- Applicable Industries: Hotels, Garment Shops, Building Material Shops, Manufacturing Plant, Food & Beverage Factory
- Electric Current Type: AC
- Mounting: Duct Fan
- After-sales Service Provided: Online Support
- Place Of Origin: China Foshan
- Blade Material: Plastic
- Voltage: 220V
- Warranty: 1 Year
- Product Name: Cabinet Fan
- Certification: CE
- Air Quantity: 900/820
- Material: Plastic
- Highlight: 220V inline bathroom exhaust fan ,



#### More Images



## Product Description

### Product Applications

#### Product Features of the Mixed Flow Circular Fan



### Easy Installation

**High Efficiency Ventilation:** The mixed flow design ensures high ventilation efficiency, allowing for rapid air exchange and significant improvement in indoor air quality within a short period.

**Low Noise Operation:** Equipped with advanced noise reduction technology, the fan operates quietly, minimizing disturbances to daily life and work environments.

**Energy Efficient and Environmentally Friendly:** Compared to traditional ventilation fans, the mixed flow fan is more energy-efficient, reducing power consumption and lowering environmental impact.

**Easy Installation:** With its compact and sleek design, the fan is simple to install and adaptable to various installation needs, making it space-efficient and convenient.

**Durable and Reliable:** Constructed from high-quality materials, the fan offers excellent durability and reliability, ensuring a long service life and reducing maintenance and replacement costs.

#### 1. Compact Design

**Space Efficiency:** Variable frequency duct fans are designed to be compact, requiring minimal space. This allows for convenient installation in tight areas such as duct shafts and ceiling voids.

**Minimal Preparation:** Their small size reduces the need for extensive space preparation, simplifying the installation process and minimizing complexity.

#### 2. Simple Connection Methods

**Standard Connections:** The fan typically uses standard duct connection methods, such as flange or threaded connections. These straightforward methods enable quick and easy installation by the personnel.

**Secure Fit:** The connections are tight and reliable, reducing the risk of air leakage and ensuring proper operation of the ventilation system.

#### 3. Clear Electrical Connections

**User-Friendly Wiring:** The electrical connections for the variable frequency controller are generally well-organized with clear labeling and instructions. This allows installers to connect the wiring accurately and reduces the risk of connection errors.

**Quick Connectors:** Some models come with quick-connect plugs and other convenient electrical connections, further simplifying the installation process.

#### 4. Lightweight

**Reduced Handling:** Compared to larger ventilation equipment, variable frequency duct fans are lighter in weight. This eliminates the need for heavy lifting equipment during installation, lowering both costs and difficulty.

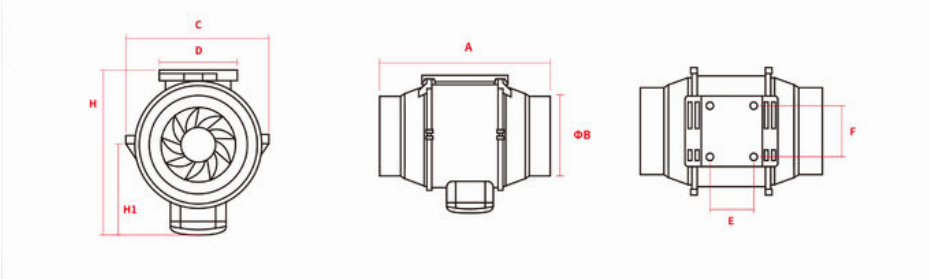
**Enhanced Efficiency:** The reduced weight facilitates easier handling and installation, improving overall installation efficiency.

### Product Parameters

Model number	Power	Airflow	Static Pressure	Noise Level	Duct Diameter	Quantity per Carton	Net Weight
	(W)	(m <sup>3</sup> /h)	(Pa)	(dB)	(mm)	(Unit Box)	(kg)
DJT10-20	30/26	200/170	183/130	30/25	100	6	1.8
DJT15-54	48/40	540/384	330/280	40/35	150	6	2.2

DJT20-90	76/60	900/820	380/310	50/45	200	6	2.7
DJT25-170	173/152	1700/1200	550/480	56/50	250	1	18
DJT31-230	350/260	2300/1900	650/500	60/55	315	1	20

**Product Dimensions Diagram**



**Product Dimensions Parameters**

Model number	A	B(Φ)	C	D	E	F	H	H1
dJT10-20	300	100	100	214	62	60	182	95
DJT15-54	293	150	120	237	72	70	211	110
DJT20-90	304	200	140	258	78	85	235	124
DJT25-170	367	250	317	208	120	95	365	196
DJT31-230	450	315	360	255	120	95	410	215

 **ZhongDian** **Guangdong Zhongdian Jiajin Environmental Technology Co., Ltd.**

 0085246403891    
  sales001@zd-fan.com    
  zd-fan.com

Xizi Industrial Zone, Lishui Town, Nanhai District, Foshan City, Guangdong Province, China