

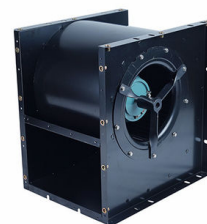
OBM AC Didw Radial Double Inlet Centrifugal Fan 220V 380V

Our Product Introduction

for more products please visit us on zd-fan.com

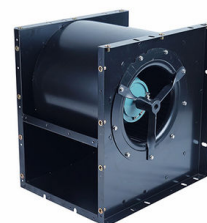
Basic Information

- Place of Origin: China Foshan
- Brand Name: Available for ODM
- Certification: CE
- Model Number: DKT-2.15B-F
- Minimum Order Quantity: 1
- Price: Contact Us
- Packaging Details: Carton packaging 1 units per carton
- Delivery Time: 3-8 work days
- Payment Terms: T/T
- Supply Ability: 5000

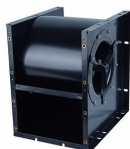


Product Specification

- Applicable Industries: Manufacturing Plant, Home Use, Construction Works , Cooling System, Ventilation System ,refrigeration, Air Conditioning, HVAC Industrial
- Electric Current Type: AC
- After-sales Service Provided: Video Technical Support
- Place Of Origin: Guangdong, China
- Voltage: 220/380V
- Customized Support: OEM, ODM, OBM
- Blade Material: Steel Plate
- Mounting: FREE STANDING
- Warranty: 1 Year
- Core Components: Motor, Bearing, Impeller, Flange, Shaft
- Certification: CE
- Color: Black



More Images



Product Description

Product Applications

The DKT series centrifugal air conditioning fans are compact, low-noise fans developed using advanced international technology. With a rated airflow of 900 m³/h to 9200 m³/h and a total pressure range of 288 Pa to 690 Pa, these fans feature an external rotor motor with direct drive. They are characterized by high efficiency, low noise, large airflow, small size, and compact structure. They are ideal for use as components in variable air volume (VAV) air conditioners, ducted air handling units, VAV systems, and other HVAC and air purification equipment.

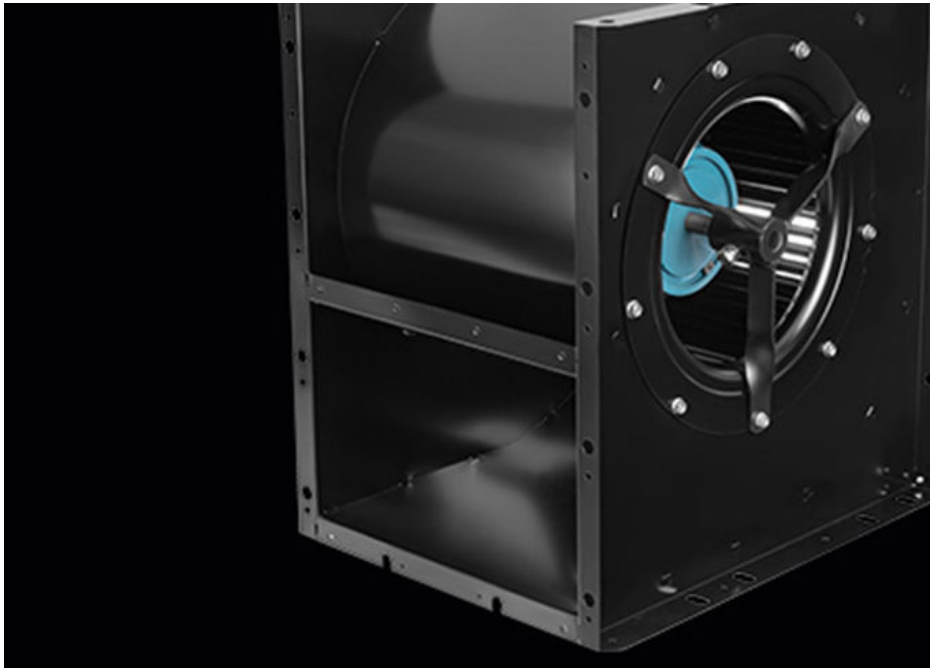
Rotation Direction

The DKT series fans are available in two rotation directions: left-handed (LG) and right-handed (RG). When viewed from the motor's terminal end, a fan with the impeller rotating clockwise is termed a right-handed fan, while one with the impeller rotating counterclockwise is termed a left-handed fan.



DKT Series Fan Components







Product Performance Parameters

Housing The housing is made of hot-dip galvanized steel plate. The side panels are shaped to aerodynamic standards, with the intake formed as a single piece, and the scroll plate riveted to the side panels. A series of threaded nut holes are preset on the side panels to allow for installation according to the desired air outlet direction.

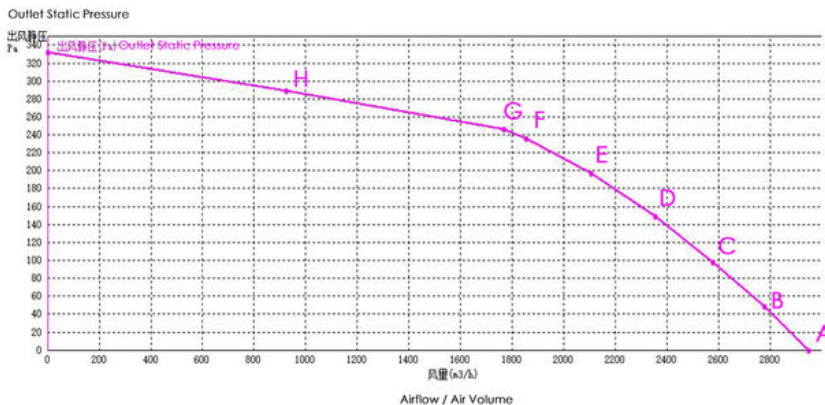
Impeller The forward-curved multi-wing impeller is constructed from high-quality hot-dip galvanized steel plate. The blades are designed in a specific aerodynamic shape to maximize efficiency and minimize noise. The blades are secured to the hub and end rings with rivets, providing sufficient rigidity for continuous operation at maximum power. All impellers undergo static and dynamic balancing tests, with an internal control precision reaching G2.5 grade (ANSI/AMCA-204).

Support Plate (Frame) The support plate is made from high-quality galvanized steel, with a unique strengthening process ensuring sufficient strength. The installation angle of the support plate can be adjusted to meet different user requirements.

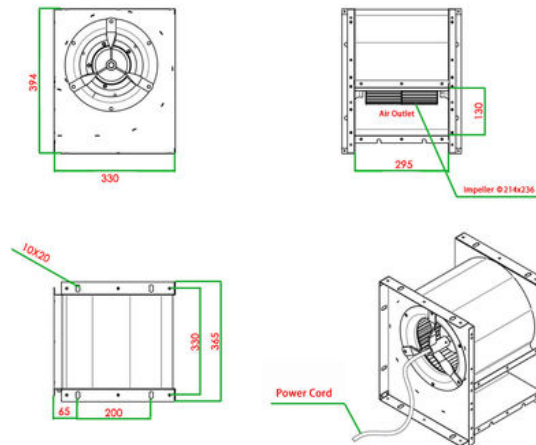
Motor The DKT series fan is equipped with a low-noise external rotor three-phase asynchronous motor. This motor features a fixed shaft with a rotating external housing. It is mounted on the impeller's hub and directly drives the impeller through the rotation of its external housing. Special motors can be selected for the DKT series fans according to user requirements. These motors can be equipped with three-phase voltage regulators, silicon-controlled rectifiers, or frequency converters for stepless speed regulation to meet the variable load demands of the system.

Model			DKT-2.15B-F		Fan Type			Centrifugal Fan		
Rated Voltage			220v		Frequency			50Hz		
Rated Power			0.32KW		Noise Level					
RPM (Revolutions Per Minute)			1400r/min		Rated Current			2.36A		
No	Item	Units	A	B	C	D	E	F	G	H
1	Outlet Static Pressure	Pa	0.000	48.625	98.313	148.625	198.688	247.625	260.875	277.938
2	Dynamic Pressure	pa	193.021	167.655	142.402	117.013	91.335	61.777	49.031	22.366
3	Total Pressure	pa	193.021	216.280	240.715	265.638	290.023	309.402	309.906	300.304
4	Airflow/Air Volume	m3/h	2574.896	2399.820	2211.825	2005.079	1771.654	1457.474	1298.573	877.236

Curve Chart




Product Dimensions Diagram



 **ZhongDian** Guangdong Zhongdian Jiajin Environmental Technology Co., Ltd.

 0085246403891

 sales001@zd-fan.com

 zd-fan.com

Xizi Industrial Zone, Lishui Town, Nanhai District, Foshan City, Guangdong Province, China