

OEM 220V Double Inlet Didw Fans Centrifugal Radial Fan Blower Outer Rotor

Our Product Introduction

for more products please visit us on zd-fan.com

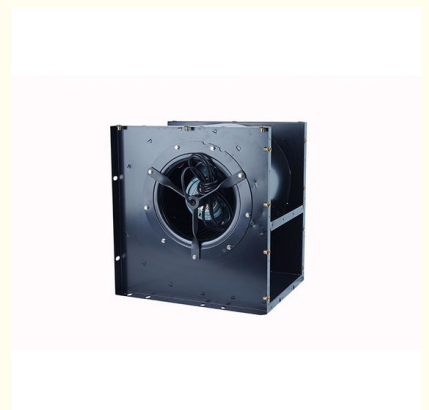
Basic Information

- Place of Origin: China Foshan
- Brand Name: Available for ODM
- Certification: CE
- Model Number: DKT-3.15-F
- Minimum Order Quantity: 1
- Price: Contact Us
- Packaging Details: Carton packaging 1 units per carton
- Delivery Time: 3-8 work days
- Payment Terms: T/T
- Supply Ability: 5000



Product Specification

- Applicable Industries: Manufacturing Plant, Home Use, Construction Works , Cooling System, Ventilation System ,refrigeration
- After-sales Service Provided: Video Technical Support
- Place Of Origin: Guangdong, China
- Customized Support: OEM, ODM, OBM
- Voltage: 380V
- Blade Material: Steel Plate
- Mounting: FREE STANDING
- Warranty: 1 Year
- Core Components: Motor, Bearing, Impeller, Flange, Shaft
- Certification: CE
- Color: Black
- Type: Centrifugal Fan
- Highlight: OEM didw fans , 220V didw fans ,



More Images



Product Description

Product Applications

The DKT external rotor fan is widely used in various air conditioning units, air curtains, and heating/cooling fans, and also plays a significant role in ventilation systems for industrial enterprises and residential buildings. The double-inlet centrifugal fan mainly consists of key components such as the impeller, volute, and motor.

The impeller features forward-curved blades and is constructed with a wheel cover and central plate, all riveted together. Each component is manufactured using stamping molds, ensuring precise dimensions, reliable profiles, and excellent aerodynamic performance. The impeller undergoes dynamic and static balancing corrections to ensure smooth operation and low noise.

The volute is coated using specialized equipment, making it both durable and aesthetically pleasing. The motor is of the external rotor type, housed within the volute and directly coupled with the impeller. This design is compact, providing smooth rotation and low noise.



External Rotor Ball Bearing Pure Copper Motor - I5 Grade

This external rotor ball bearing pure copper motor features outstanding performance characteristics, making it ideal for demanding industrial and commercial applications. The external rotor design ensures a compact motor structure, enhancing direct and efficient power output. The motor utilizes high-quality ball bearings to maintain smooth operation at high speeds, reducing friction and noise, which extends the motor's lifespan.

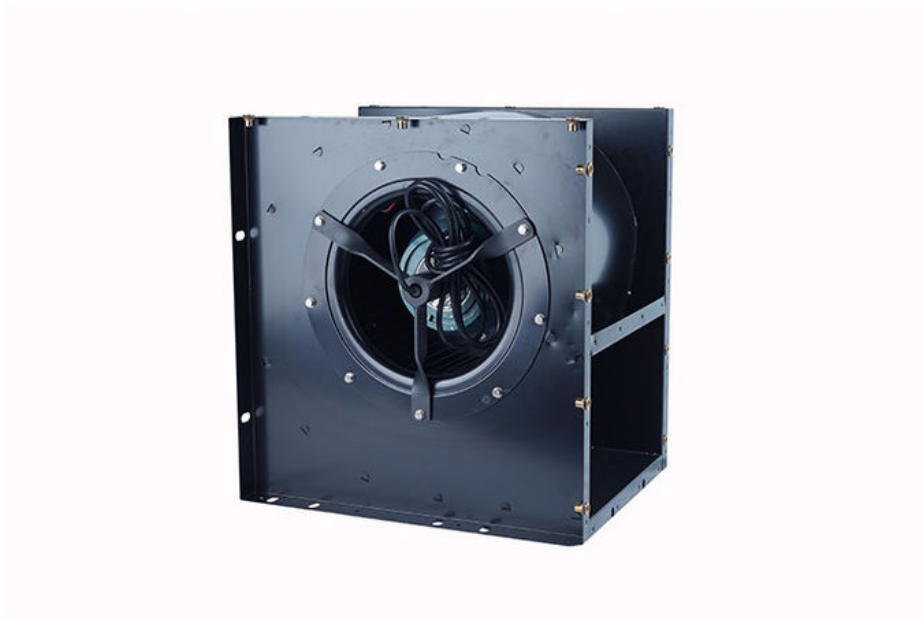
The use of pure copper materials provides excellent electrical conductivity and heat dissipation, ensuring efficient energy conversion and effective cooling during operation. This not only enhances the motor's operational stability but also reduces energy consumption. The I5 grade indicates superior protection, effectively resisting dust and liquid ingress, and making it suitable for various challenging environments, including high temperatures and high humidity conditions.

Additionally, the motor design incorporates safety and reliability features to prevent overheating and other potential issues, ensuring robust performance. Whether used in industrial production lines, commercial facilities, or other high-demand settings, this motor delivers powerful support and ensures continuous, stable operation of equipment.



DKT External Rotor Fan Square Shape Features

The DKT external rotor fan's square shape design offers several notable advantages. Firstly, the square shape provides flexibility in installation and layout, making efficient use of space, especially in tight or irregular areas. This design enhances the fan's stability, reducing noise and imbalance caused by vibrations, and ensuring smoother operation. Additionally, the square housing is made from high-strength materials, offering durability and impact resistance to protect internal components from external environmental factors. Furthermore, the square shape contributes to a clean and aesthetically pleasing appearance, allowing the fan to blend seamlessly with various architectural and decorative styles, enhancing the overall visual effect.



Centrifugal Metal Fan Wheel

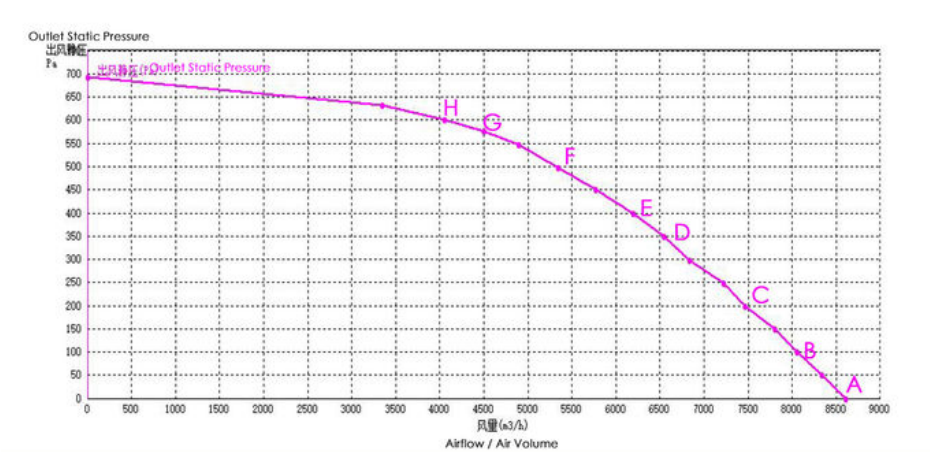
Automation technology ensures precision and consistency in the manufacturing of multi-wing centrifugal metal fans, enhancing overall product quality and performance. High-strength metal materials are processed using advanced cutting and forming techniques, resulting in superior durability and resistance to centrifugal forces. The multi-wing design optimizes airflow efficiency, enabling the fan to deliver a larger air volume within the same dimensions. Balanced through dynamic testing, the fan operates smoothly with low noise and minimal vibration, ensuring efficient and stable performance. The metal surface is treated with coating processes that provide excellent corrosion and abrasion resistance, making it suitable for various environmental conditions. The real-time quality monitoring systems on automated production lines ensure the reliability and performance stability of the fan across different working environments.



Product Performance Parameters

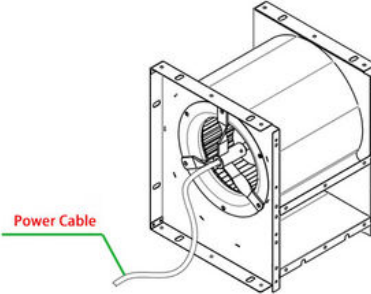
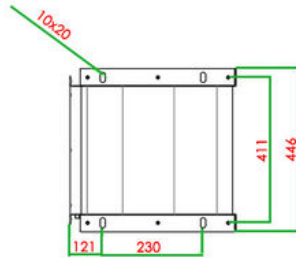
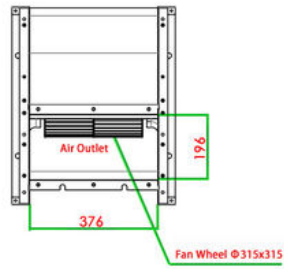
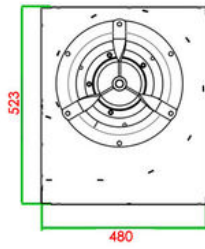
Model			DKT-3.15-F		Fan Type			Centrifugal Fan		
Rated Voltage			220v		Frequency			50Hz		
Rated Power			2.2KW		Noise Level					
RPM (Revolutions Per Minute)			1400r/min		Rated Current			5.2A		
No	Item	Units	A	B	C	D	E	F	G	H
1	Outlet Static Pressure	Pa	0.000	100.500	199.813	298.188	398.563	498.063	574.750	601.375
2	Dynamic Pressure	pa	638.734	559.197	480.620	403.059	330.859	245.862	174.622	.505
3	Total Pressure	pa	638.734	659.697	680.432	701.247	729.422	743.925	749.372	742.880
4	Airflow/Air Volume	m3/h	8603.340	8050.148	7463.927	6835.554	6194.091	5340.544	4502.651	4054.028

Curve Chart



Dimension Diagram

Unit: mm



 **ZhongDian** Guangdong Zhongdian Jiajin Environmental Technology Co., Ltd.

 0085246403891

 sales001@zd-fan.com

 zd-fan.com

Xizi Industrial Zone, Lishui Town, Nanhai District, Foshan City, Guangdong Province, China