

ODM Low Noise Double Inlet Double Width Centrifugal Fan Blower High Airflow

Our Product Introduction

Basic Information

- Place of Origin: China Foshan
- Brand Name: Available for ODM
- Certification: CE
- Model Number: DKT-2.55A-F
- Minimum Order Quantity: 1
- Price: Contact Us
- Packaging Details: Carton packaging 1 units per carton
- Delivery Time: 3-8 work days
- Payment Terms: T/T
- Supply Ability: 5000



Product Specification

- Applicable Industries: Hotels, Garment Shops, Building Material Shops, Manufacturing Plant, Machinery Repair Shops, Food & Beverage Factory, Farms, Restaurant, Home Use, Retail, Food Shop, Printing Shops, Construction Works
- Electric Current Type: AC
- After-sales Service Provided: Online Support
- Place Of Origin: Zhejiang, China
- Voltage: 220/380V
- Customized Support: OEM, ODM, OBM
- Blade Material: Steel Plate
- Mounting: FREE STANDING
- Warranty: 1 Year
- Core Components: Motor, Bearing, Impeller, Flange, Shaft
- Type: Centrifugal Fan



More Images



Product Description

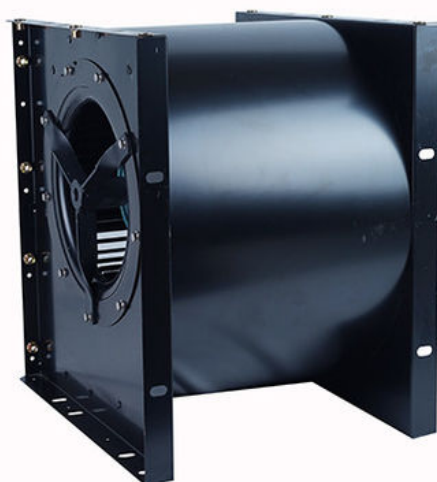
Product Applications:

In ventilation systems, it ensures efficient air circulation, providing fresh air to various environments such as shopping malls, offices, factories, and improving indoor air quality. In air conditioning equipment, this component aids in achieving rapid air circulation and temperature regulation, enhancing cooling and heating performance. In industrial production, it is used for ventilation, exhaust of harmful gases and dust, creating a safe working environment for employees. Additionally, in specialized settings such as clean rooms and laboratories, it strictly controls air flow direction and speed to maintain cleanliness and stability. Furthermore, in the cooling systems of large equipment, the square external rotor double-inlet fan component plays a crucial role in preventing equipment damage due to overheating.



High-quality metal housing

The square metal spray-coated housing features a distinct appearance with its orderly square shape and smooth, clean lines. The metal material is inherently durable, and after spraying treatment, the surface is smooth, delicate, and evenly colored, which enhances the housing's corrosion resistance and overall aesthetics. The square design ensures greater stability during placement or installation, reducing the risk of wobbling. It is easily adaptable for use in both ventilation fans and HVAC products.



High-quality motor

The motor configuration features an external rotor ball bearing pure copper motor with an IP54 rating, offering several notable advantages. First, the external rotor design results in a compact structure with more direct and efficient power output. The use

of ball bearings ensures smooth operation, reduces friction loss, and extends the motor's lifespan. The pure copper construction provides excellent conductivity and heat dissipation, ensuring stable performance during operation. The IP54 rating indicates good dust and water splash protection, making it suitable for various challenging environments. It effectively prevents dust ingress and can operate normally under light water splashes. This motor offers high reliability and stability, supporting continuous operation across industrial, commercial, and other sectors, and meeting diverse application needs.



High-quality metal centrifugal impeller

The impeller is crafted from high-quality metal materials, ensuring durability and the ability to withstand the centrifugal forces generated by high-speed rotation. The design of the impeller is both scientific and rational, with blade shapes meticulously optimized to efficiently drive air flow and produce strong airflow. It operates smoothly with minimal vibration and noise, providing a quiet user experience. The high-quality centrifugal impeller boasts excellent dynamic balancing performance, preventing wobbling or imbalance during high-speed operation. Additionally, its aerodynamic performance is outstanding, allowing for efficient energy conversion and reduced energy consumption. The impeller is also resistant to corrosion and wear, making it suitable for various working environments and extending its service life, thus ensuring reliable performance in ventilation and air conditioning systems.

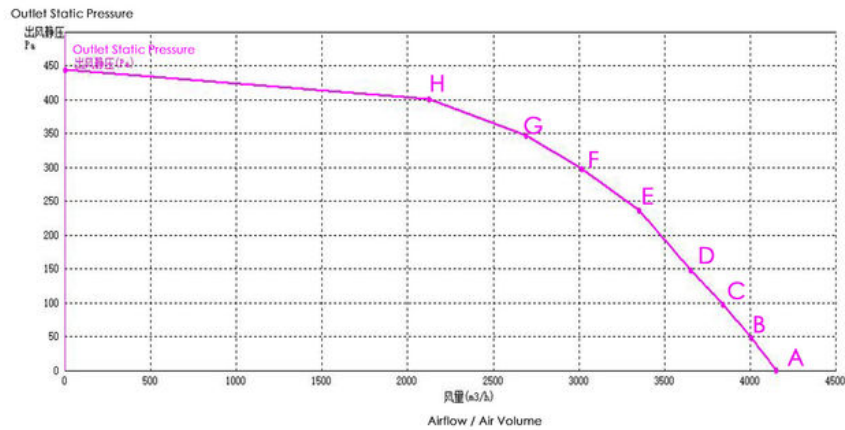


Product Parameters and Performance

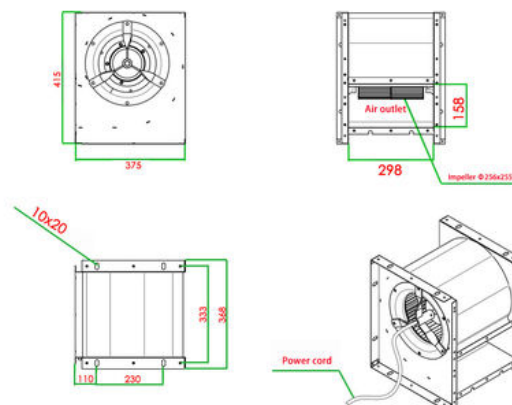
Model	DKT-2.55A-F	Fan Type	Centrifugal Fan
Rated Voltage	220V	Frequency	50Hz
Rated Power	0.75KW	Noise Level	
RPM (Revolutions Per Minute)	1400r/min	Rated Current	4.70A

No	Item	units	a	b	c	d	e	f	g	h
1	Outlet Static Pressure	Pa	0.437	48.438	98.563	149.188	236.938	298.000	348.438	401.313
2	Dynamic Pressure	pa	331.174	308.535	283.472	256.327	215.939	175.021	139.121	86.768
3	Total Pressure	pa	331.611	356.973	382.035	405.514	452.877	473.021	487.559	488.081
4	Airflow/Air Volume	m3/h	4145.63 3	4001.57 0	3835.59 9	3647.32 9	3348.028	3014.588	2687.967	2123.011

Curve chart



Dimension drawing



ZhongDian Guangdong Zhongdian Jiajin Environmental Technology Co., Ltd.

0085246403891

sales001@zd-fan.com

zd-fan.com

Xizi Industrial Zone, Lishui Town, Nanhai District, Foshan City, Guangdong Province, China