

Weatherproof Didw Double Width Double Inlet Fan Ventilation Extractor

Our Product Introduction

for more products please visit us on zd-fan.com

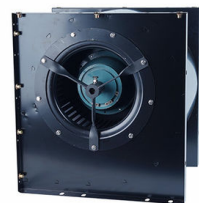
Basic Information

- Place of Origin: China Foshan
- Brand Name: Available for ODM
- Certification: CE
- Model Number: DKT-2.35-F
- Minimum Order Quantity: 1
- Price: Contact Us
- Packaging Details: Carton packaging 1 units per carton
- Delivery Time: 3-8 work days
- Payment Terms: T/T
- Supply Ability: 5000

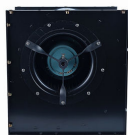


Product Specification

- Applicable Industries: Hotels, Garment Shops, Building Material Shops, Manufacturing Plant, Machinery Repair Shops, Food & Beverage Factory, Farms, Restaurant, Home Use, Retail, Food Shop, Printing Shops, Construction Works, Energy & Mining, Food & Beverage Shops, Other, Advert
- After-sales Service Provided: Online Support
- Electric Current Type: AC
- Place Of Origin: Shanghai, China
- Voltage: 220/380V
- Customized Support: OEM, ODM, OBM
- Blade Material: Steel Plate
- Mounting: FREE STANDING
- Warranty: 1 Year
- Core Components: Motor, Other, Bearing



More Images



Product Description

Product Applications:

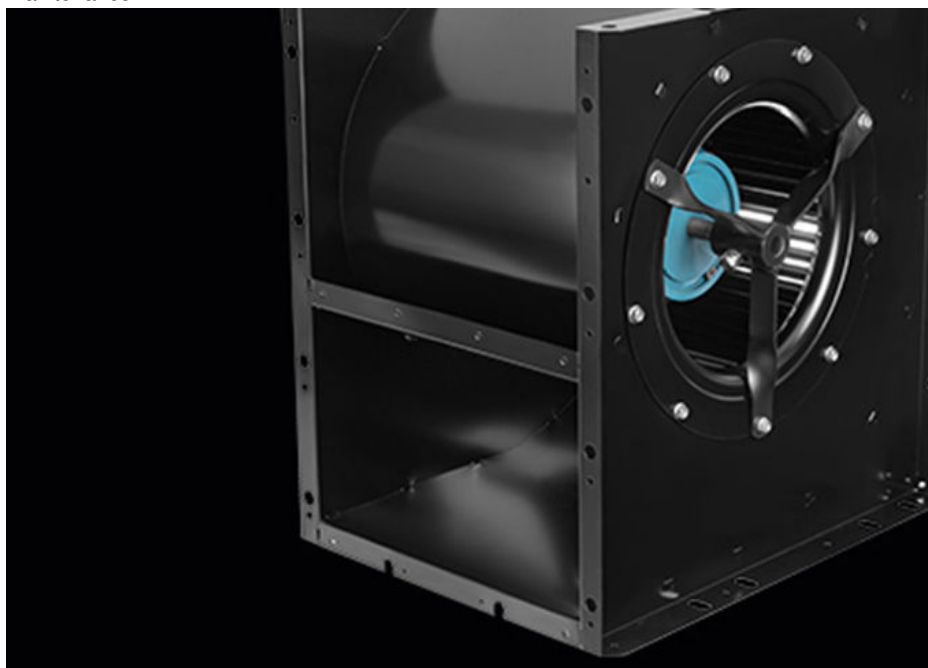
In the ventilation field, it can be used in large commercial spaces such as shopping malls, supermarkets, and hotels to facilitate efficient air exchange, providing a comfortable indoor environment. In industrial production, it helps with ventilation and air exchange in factory workshops, removing harmful gases and dust to ensure worker health and production safety. In air conditioning systems, as an auxiliary component, the double inlet design increases airflow, enhancing the cooling or heating effect of the air conditioner.

In the purification field, it can be paired with air purification equipment to quickly draw in polluted air and expel purified air, effectively improving air purification efficiency. In underground parking garages and similar areas, it effectively removes harmful gases such as exhaust fumes, keeping the air fresh. Additionally, in specialized industrial applications like drying equipment and cooling systems, the DKT double inlet fan plays a crucial role in meeting various ventilation and air circulation needs.



Square High-Quality Metal Housing

The square design offers greater flexibility in installation and layout, adapting better to different spatial requirements. Compared to round housings, the square external rotor housing is easier to stack during storage and transportation, saving space. This shape typically provides a more stable structure, reducing movement during operation and ensuring smooth motor performance. Its simple and elegant appearance blends well with various devices and environments, enhancing overall aesthetics. Additionally, the square housing facilitates labeling and installation of accessory components, simplifying use and maintenance.



External Rotor IP54 Ball Bearing Pure Copper Motor

In terms of protection, the IP54 rating effectively prevents dust from entering the motor and withstands water splashes from all directions, ensuring stable operation in harsh environments. The ball bearing structure reduces friction, lowers energy loss, and improves operational efficiency while offering high load-bearing capacity for various work loads. The pure copper material ensures efficient and stable current transmission, reducing energy loss and enhancing power output. The external rotor design increases rotational inertia, resulting in smoother start-up and operation, and provides a larger surface area for heat dissipation, ensuring long-term reliable operation. Additionally, the motor features low noise operation, contributing to a quieter work and living environment. Its high reliability and long lifespan reduce maintenance costs and equipment downtime, making it suitable for a wide range of industrial and commercial applications.



High-Quality Metal Centrifugal Fan Blades

The coating enhances the impeller's corrosion resistance, preventing rust and damage in various environments, thus extending its lifespan. It also improves the appearance, adding attractive colors and textures to enhance the overall look of the equipment. The coating helps reduce noise by minimizing friction and vibration during operation. Additionally, it increases the impeller's abrasion resistance, effectively resisting wear during high-speed rotation. Furthermore, the appropriate coating material optimizes the impeller's aerodynamic performance, reducing air resistance and improving the fan's efficiency and airflow, ensuring reliable operation for ventilation systems.

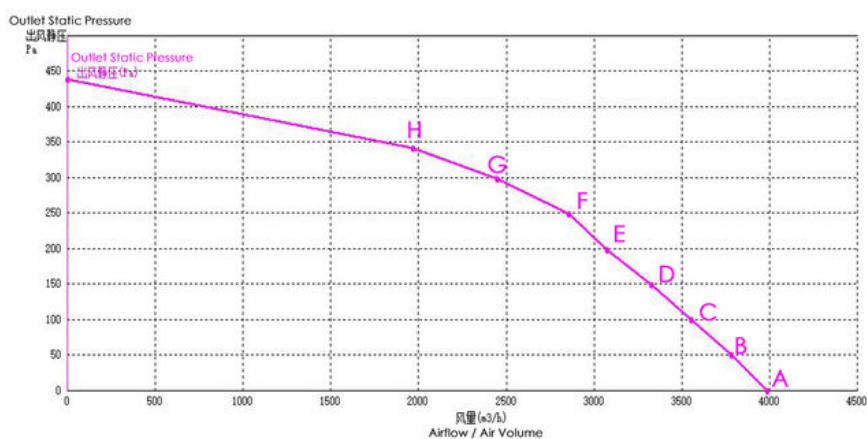


Product Performance Parameters

Model	DKT-2.35-F	Fan Type	Centrifugal Fan
Rated Voltage	220V	Frequency	50Hz
Rated Power	0.55KW	Noise Level	

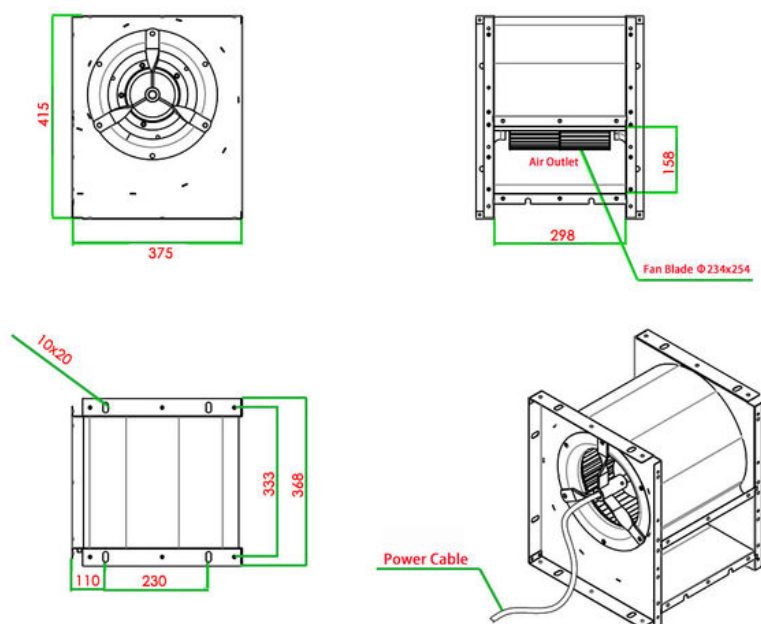
RPM (Revolutions Per Minute)			1400r/min		Rated Current			3.87A		
No	Item	Units	A	B	c	d	e	f	g	h
1	Outlet Static Pressure	Pa	0.000	50.500	99.562	149.563	197.688	248.563	298.313	341.500
2	Dynamic Pressure	pa	305.334	274.792	242.983	212.478	181.494	156.902	115.423	74.329
3	Total Pressure	pa	305.334	325.292	342.546	362.041	379.182	405.465	413.735	415.829
4	Airflow/Air Volume	m3/h	3983.34 1	3778.99 9	3553.55 5	3323.12 5	3071.293	2856.537	2450.159	1966.299

Curve Chart



Dimensions Diagram

Unit: mm



ZhongDian Guangdong Zhongdian Jiajin Environmental Technology Co., Ltd.

0085246403891

sales001@zd-fan.com

zd-fan.com

Xizi Industrial Zone, Lishui Town, Nanhai District, Foshan City, Guangdong Province, China