

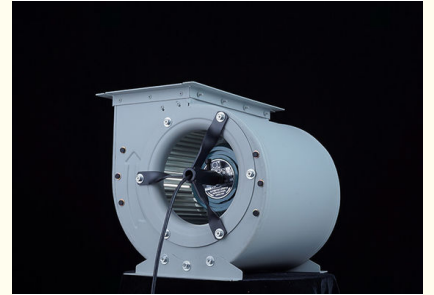
DKT In Line Cabinet External Centrifugal Extractor Fan Blowers Radial

Our Product Introduction

for more products please visit us on zd-fan.com

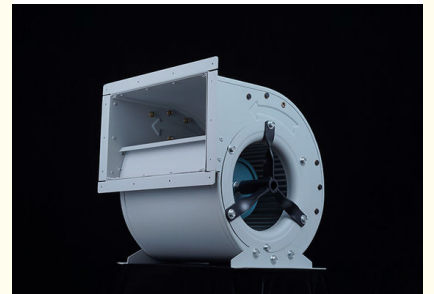
Basic Information

- Place of Origin: China Foshan
- Brand Name: Available for ODM
- Certification: CE
- Model Number: DKT-2.55A-W
- Minimum Order Quantity: 1
- Price: Contact Us
- Packaging Details: Carton packaging 1 units per carton
- Delivery Time: 3-8 work days
- Payment Terms: T/T
- Supply Ability: 5000



Product Specification

- Applicable Industries: Hotel Restaurant Workshop School Hotels, Building Material Shops, Manufacturing Plant, Food & Beverage Factory, Restaurant, Retail, Construction Works , Food & Beverage Shops
- Electric Current Type: AC
- After-sales Service Provided: Online Support
- Place Of Origin: Guangdong, China
- Voltage: 220/380V
- Blade Material: Steel Plate
- Warranty: 1 Year
- Customized Support: OEM, ODM, OBM
- Casing Material: Superior Steel Plate
- Motor: 100% Copper Wires
- Feature: Low Noise, Little Vibration, Large Air Volume



More Images



Product Description

Product Applications:

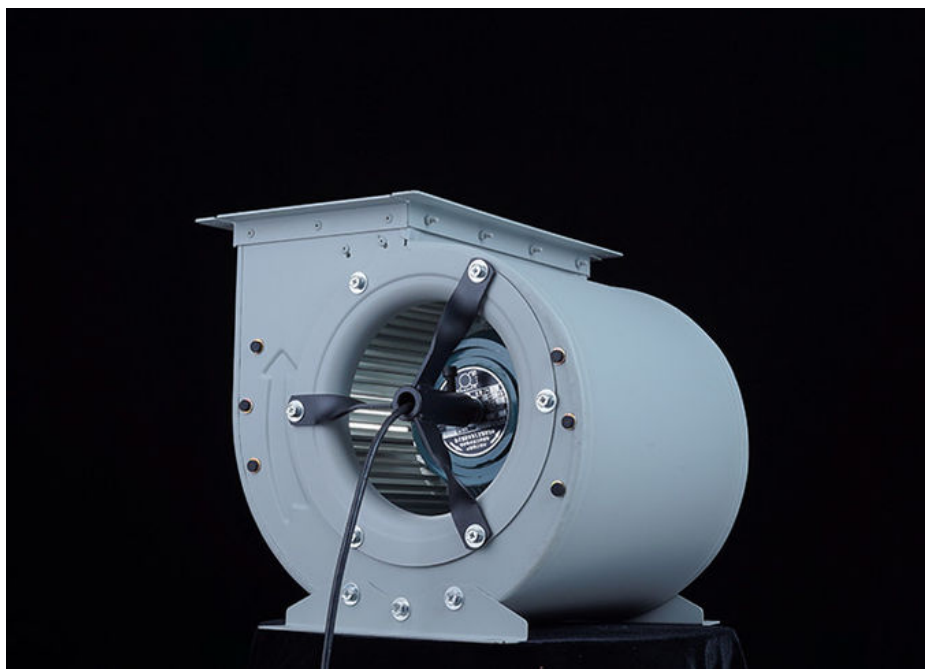
In various factory workshops, centrifugal blowers and fans can effectively remove harmful gases, smoke, and dust, improving the working environment and ensuring the health and safety of workers. They are widely used in ventilation systems for electronics factories, machinery factories, and other industrial facilities.

Used in large public places such as shopping malls, supermarkets, office buildings, and hotels to promote air circulation and exchange, providing a comfortable indoor environment.

For residential buildings such as houses and apartments, the DKT external rotor dual-inlet fan can meet ventilation needs, ensuring fresh indoor air.

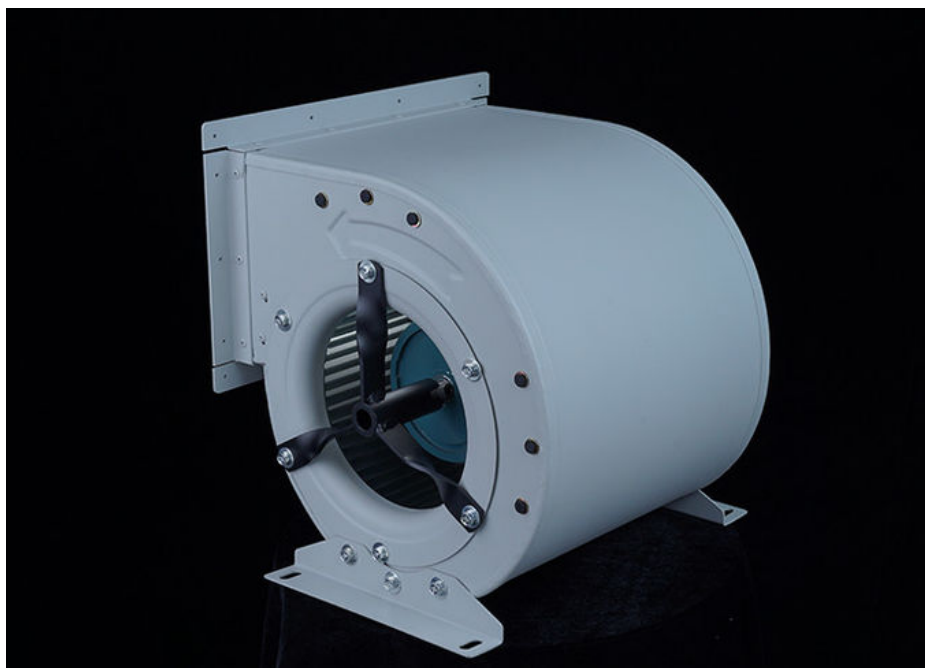
Air Conditioning System Support: An essential component of central air conditioning systems, it helps regulate indoor temperature and humidity, achieving even air distribution and efficient circulation, and enhancing the cooling or heating effectiveness of the air conditioning system. It is widely applied in commercial and residential air conditioning systems.

Purification Equipment: Used in air purification devices to enhance purification efficiency by promoting air circulation and filtration. Commonly found in various air purification systems and environmental protection equipment.



Thickened volute, robust and durable

The fan volute uses professional equipment for interlocking with an edge-sealed design, ensuring durability and sturdiness. The shape is aesthetically pleasing, with a sleek and sturdy body.



Pure copper motor, powerful performance

External rotor motor with a pure copper core, offering stable performance with features such as low heat generation, high efficiency, and low energy consumption, ensuring smooth operation of the fan.



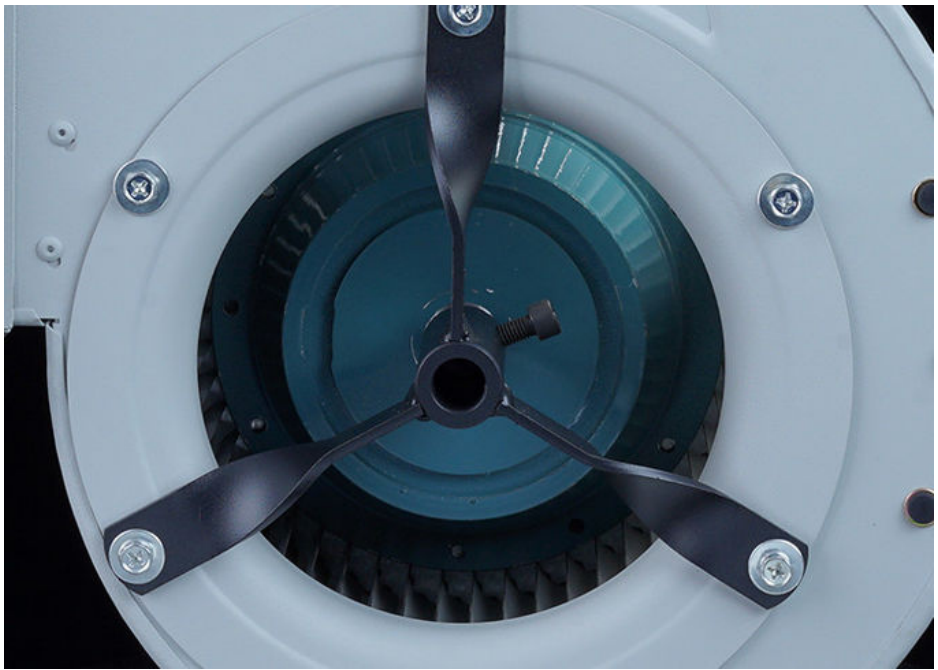
Multi-blade impeller

The impeller features a centrifugal multi-blade design for smooth operation. The blades have a specialized aerodynamic shape, ensuring high efficiency and low noise.



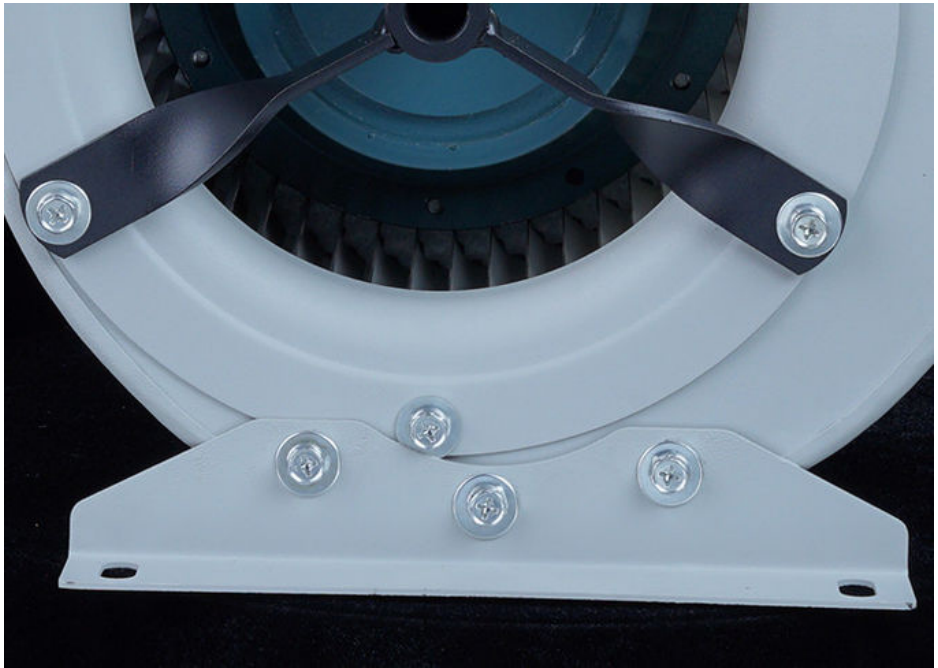
Fixed bracket

The base features four thickened, widened steel plates for stable four-point support, ensuring stable and powerful operation of the motor at high speeds.



Adjustable bracket

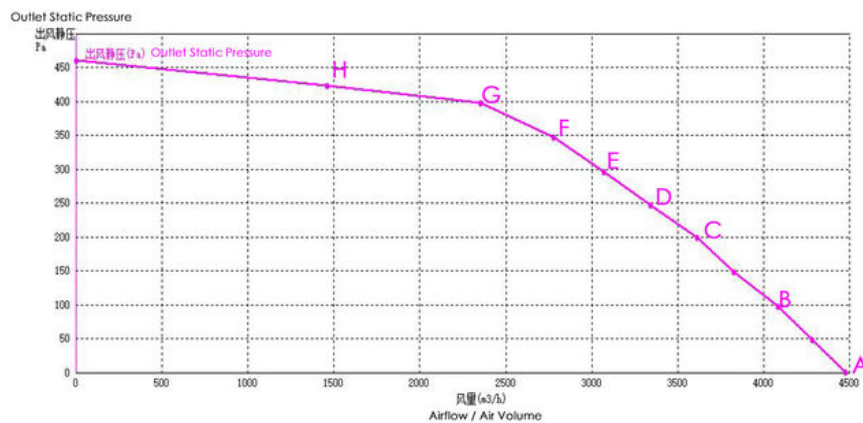
The fan bracket is adjustable 360°, allowing for any angle adjustment as needed, with pre-drilled mounting holes.



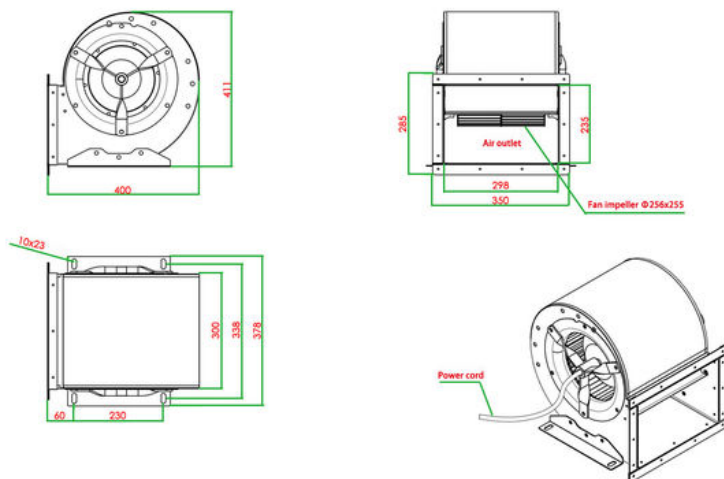
Product Performance Specifications

Model			DKT-2.55A-W		Fan Type			Centrifugal Fan		
Rated Voltage			380V		Frequency			50Hz		
Rated Power			0.8KW		Noise Level					
RPM (Revolutions Per Minute)			1400r/ min		Rated Current			2.3A		
No	Item	Units	A	B	C	D	E	F	G	H
1	Outlet Static Pressure	Pa	0.437	98.500	200.438	297.688	347.438	398.625	424.875	461.625
2	Dynamic Pressure	pa	425.652	354.585	277.415	200.112	163.804	117.457	45.341	0.000
3	Total Pressure	pa	426.089	453.085	477.853	497.799	511.242	516.082	470.216	461.625
4	Airflow/ Air Volume	m3/h	4471.251	4081.101	3610.176	3066.513	2775.231	2350.296	1460.532	0.000

Curve chart



Dimensions diagram



ZhongDian Guangdong Zhongdian Jiajin Environmental Technology Co., Ltd.

0085246403891

sales001@zd-fan.com

zd-fan.com

Xizi Industrial Zone, Lishui Town, Nanhai District, Foshan City, Guangdong Province, China