

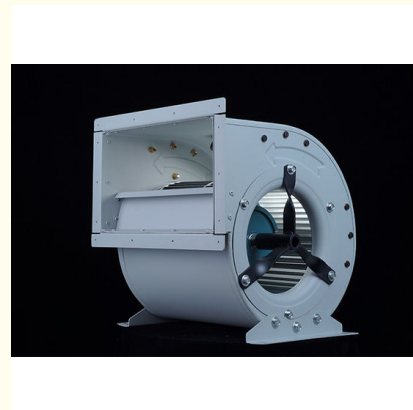
Forward Curved High Pressure Radial Blower Double Inlet Centrifugal Didw Fans KDT Series

Our Product Introduction

for more products please visit us on zd-fan.com

Basic Information

- Place of Origin: China Foshan
- Brand Name: Available for ODM
- Certification: CE
- Model Number: DKT-2.35-W
- Minimum Order Quantity: 1
- Price: Contact Us
- Packaging Details: Carton packaging 1 units per carton
- Delivery Time: 3-8 work days
- Payment Terms: T/T
- Supply Ability: 5000

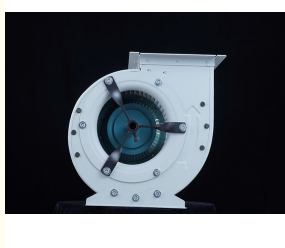


Product Specification

- Applicable Industries: Hotels, Garment Shops, Manufacturing Plant, Restaurant, Retail, Construction Works
- Electric Current Type: AC
- Customized Support: OEM, ODM, OBM
- Place Of Origin: Guangdong, China
- Voltage: 380V
- After-sales Service Provided: Video Technical Support
- Model Number: DKT-2.35-W
- Warranty: 1 Year
- Product Name: Ac Centrifugal Fan
- Certification: CE
- Highlight: Double Inlet high pressure radial blower, didw high pressure radial blower, Forward Curved didw fans



More Images



Product Description

Product Applications

Ventilation and Air Conditioning Systems: Commonly used in commercial buildings, industrial facilities, and residential areas for ventilation, air exchange, and climate control to provide a comfortable indoor environment.

Refrigeration Equipment: In air conditioning and refrigeration systems, external rotor fans assist with heat dissipation from condensers and evaporators and enhance air circulation.

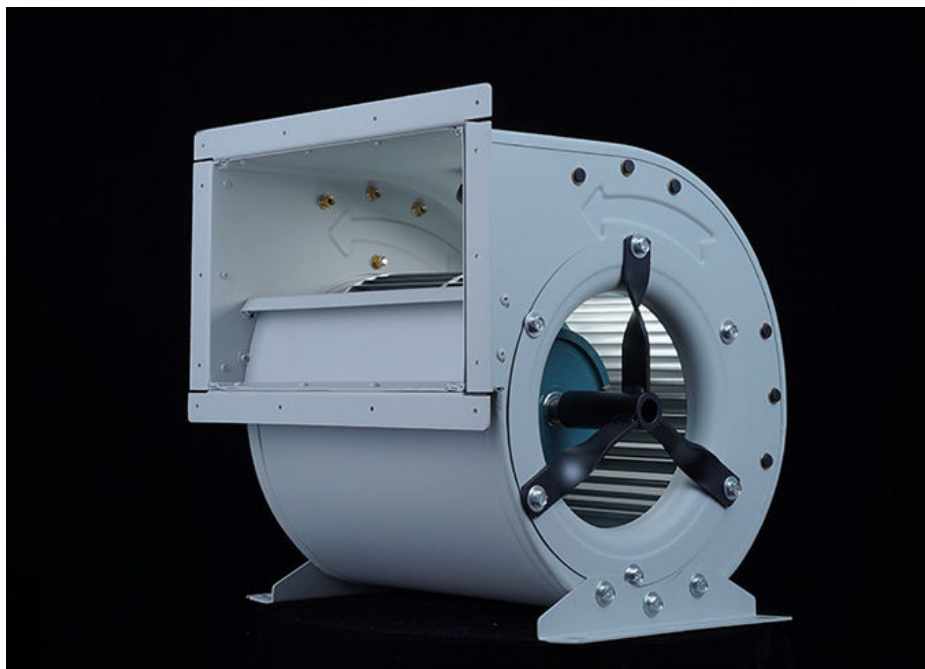
Air Purification Devices: Helps filter and circulate air to improve air purification effectiveness.

Industrial Ventilation: Used for tasks such as dust removal in factories and air cooling during material handling processes.

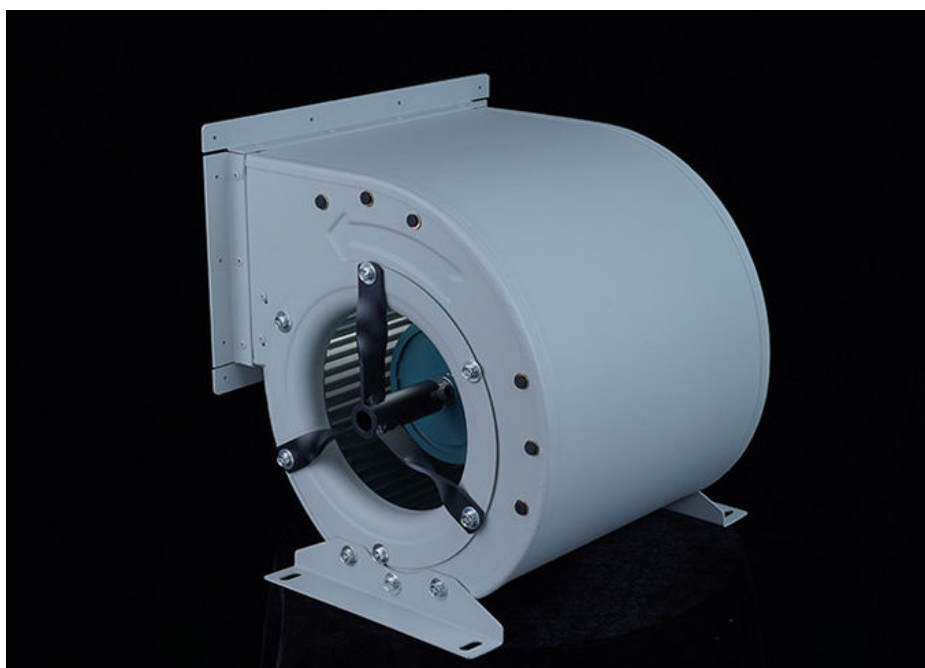
Fan Coil Units: Serves as a component of fan coil units to regulate indoor temperature and air flow.

Agriculture and Livestock: For example, used in ventilation and cooling in animal breeding facilities and air exchange in greenhouses.

In summary, due to its compact structure, high efficiency, and smooth operation, the external rotor fan plays a crucial role in various fields requiring ventilation, heat dissipation, and air circulation.



Housing: Made from high-quality cold-rolled steel plates with interlocking assembly, the exterior is treated with a spray coating to resist corrosion, rust, and moisture.



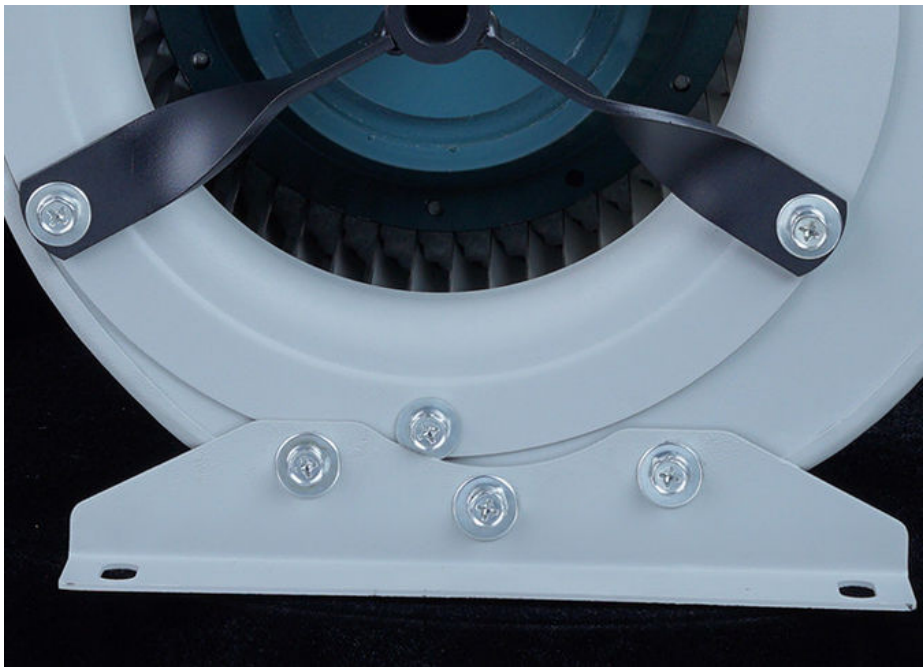
Impeller: Crafted from high-quality cold-rolled steel plates, with a spray coating on the surface, and balanced for both static and dynamic accuracy.



Motor: Utilizes a three-phase asynchronous, low-noise external rotor motor. The impeller's central disc is directly mounted on the motor housing, allowing the fan speed to be adjusted using a three-phase voltage regulator or a variable frequency drive to meet the varying demands of system load.



Rotation Direction: Viewed from the motor terminal, if the impeller rotates clockwise, it is referred to as a right-hand fan, indicated by "R." If it rotates counterclockwise, it is referred to as a left-hand fan, indicated by "L." The air outlet direction can be adjusted to 0°, 90°, or 180°, and can be configured to the left or right as needed.

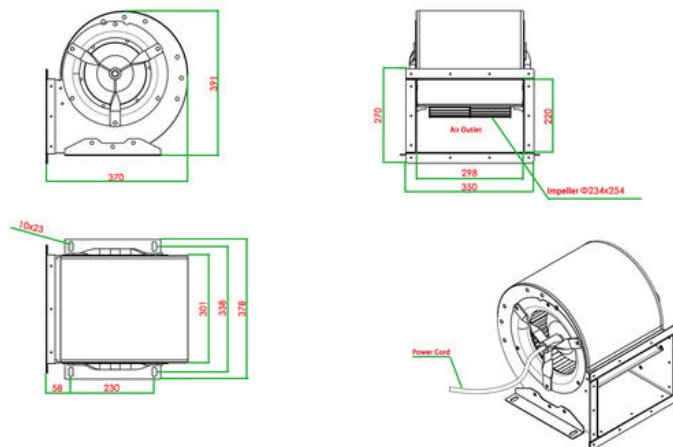


Product Performance Specifications

Model			DKT-2.35-W		Fan Type			Centrifugal Fan		
Rated Voltage			380V		Frequency			50Hz		
Rated Power			0.55KW		Noise Level					
RPM (Revolutions Per Minute)			1400r/ min		Rated Current			1.63A		
No	Item	Units	A	B	C	D	E	F	G	H
1	Outlet Static Pressure	Pa	0.000	98.875	198.438	247.875	296.500	323.375	349.563	440.125
2	Dynamic Pressure	pa	327.753	258.855	191.358	154.748	119.860	97.173	64.868	0.000
3	Total Pressure	pa	327.753	357.730	389.796	402.623	416.360	420.548	414.431	440.125
4	Airflow / Air Volume	m3/h	3975.463	3532.988	3037.969	2732.335	2404.937	2165.518	1769.404	0.000

Product Dimensions

Unit: mm



 ZhongDian **Guangdong Zhongdian Jiajin Environmental Technology Co., Ltd.**

 0085246403891

 sales001@zd-fan.com

 zd-fan.com

Xizi Industrial Zone, Lishui Town, Nanhai District, Foshan City, Guangdong Province, China

